

# ***SNOMED CT***

## **Mixed Terminology Economy**

Dr Jeremy Rogers

*IHTSDO Consultant Terminologist*

*Principal Terminology Specialists NHS HSCIC*

IHTSDO Conference, Amsterdam, October 27<sup>th</sup> 2014

# Outline

Context: The UK legacy problem

Crossmap construction and validation

Transcoding EPR data

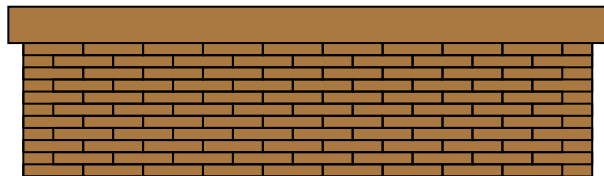
Demo

# Context : UK's mixed terminology economy

5-Byte READ2

Clinical Terms Version 3

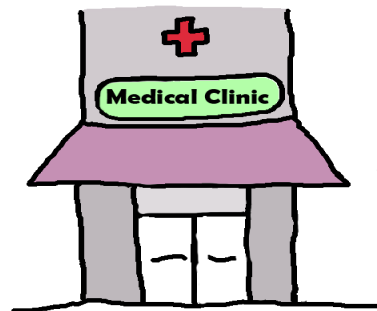
SNOMED CT



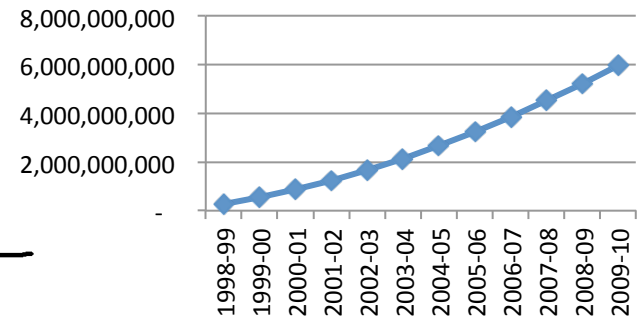
SNOMED CT

OPCS 4.7

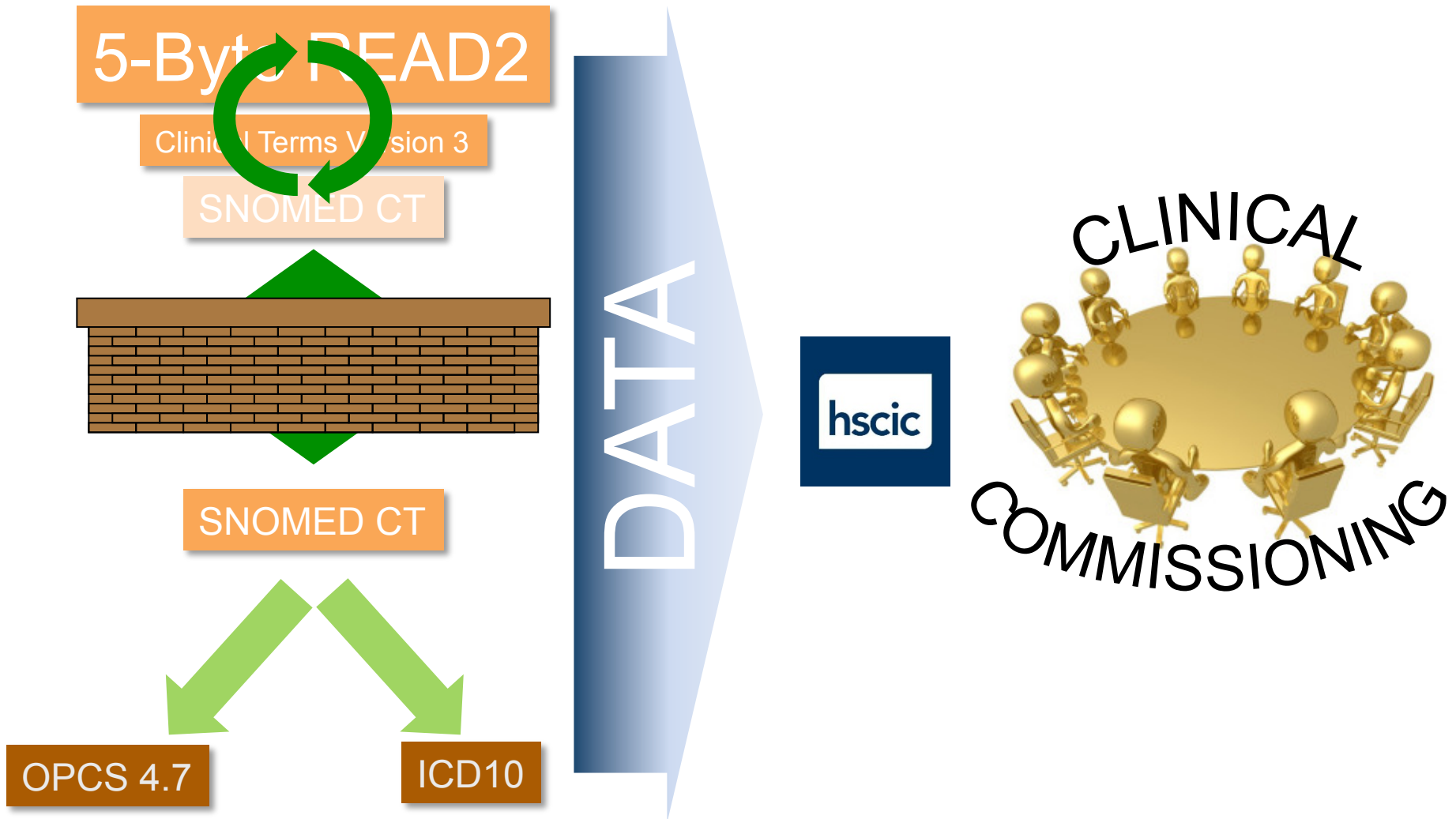
ICD10



Cumulative coded EPR items in UK  
Family Medicine



# Context : UK's mixed terminology economy



# Outline

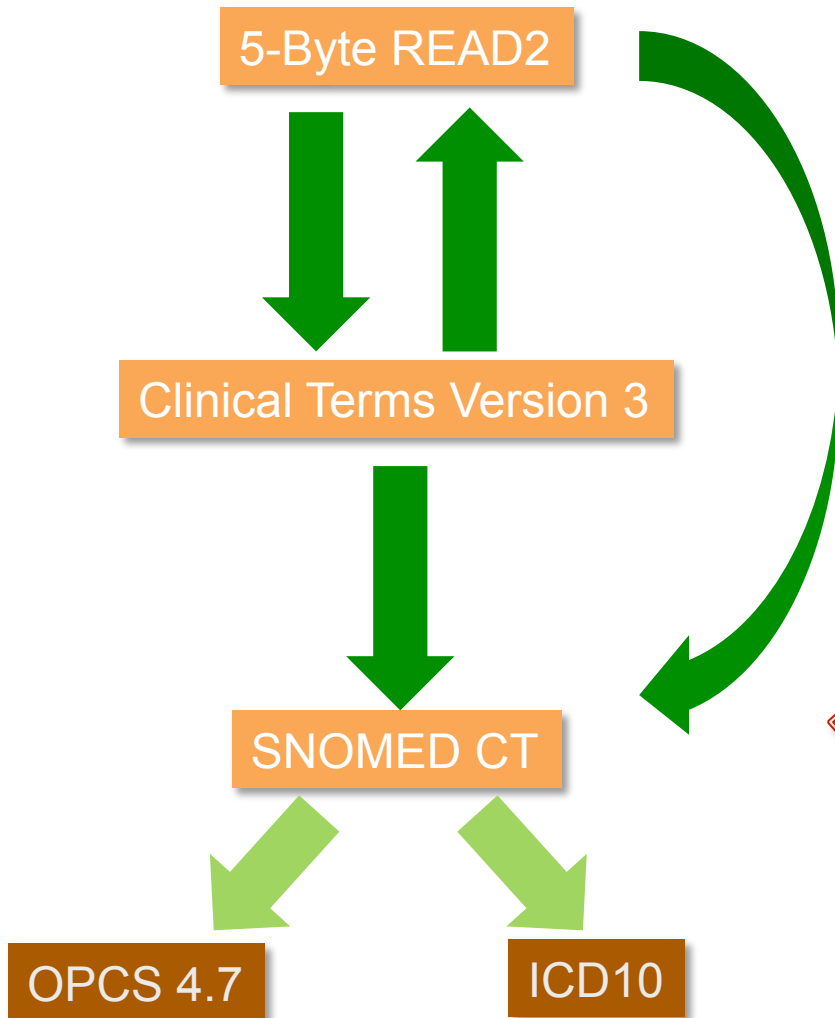
Context: The UK legacy problem

Crossmap construction and validation

Transcoding EPR data

Demo

# Crossmaps : Construction and Validation



Review 792,656 maps in duplicate  
45s each = 6 person years of effort (!!)

Compromise assurance methodology:

- Auto-assure if 100% exact term match
- Dual review residual top 20,000 codes with no 100% exact term match
- Map code+term to code+term
- Certified deployment: mandatory text degrade where no assured map

= ~100 person days of review effort  
5% of *reviewed* maps were rejected

Result: >97.5% of coded data by volume can pass through an assured map.

**PROFESSIONALLY ENDORSED**

# Map Assurance : Requirements

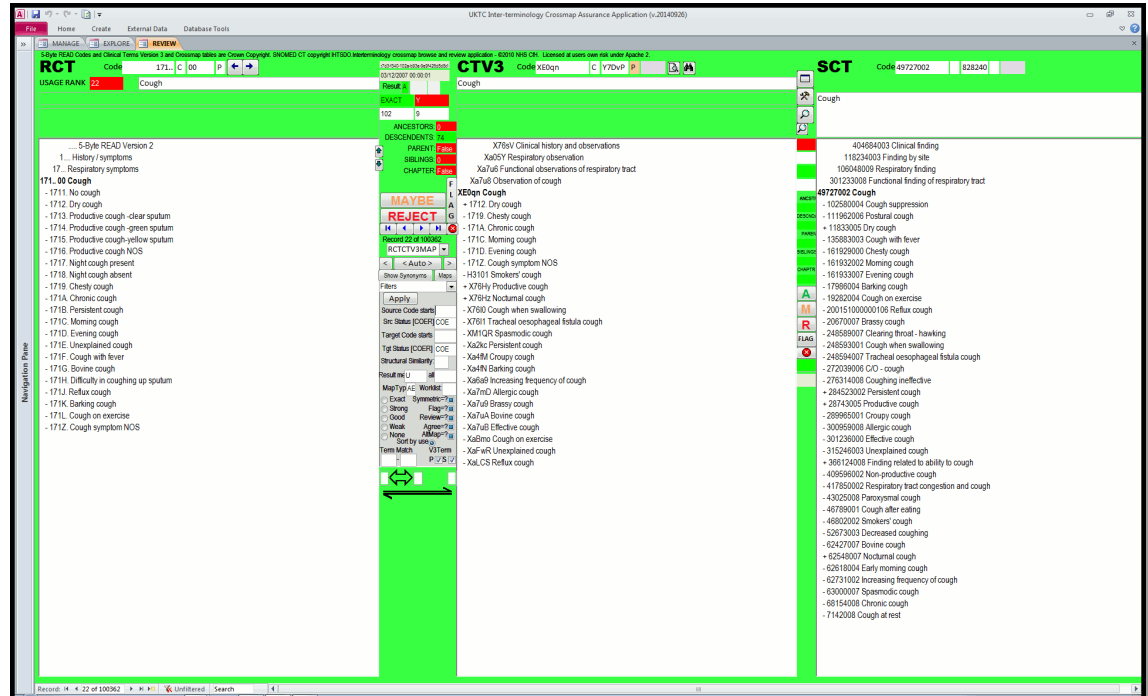
Professionally led  
Expert terminologist

~10 expert *clinical* reviewers

Code usage data – exploit the Pareto effect!

Application to expose maps and support review process

Map reference implementation



# Outline

Context: The UK legacy problem

Crossmap construction and validation

Transcoding EPR data

Demo



# Data Migration : Bulk and single item

4 maps deployed biannually

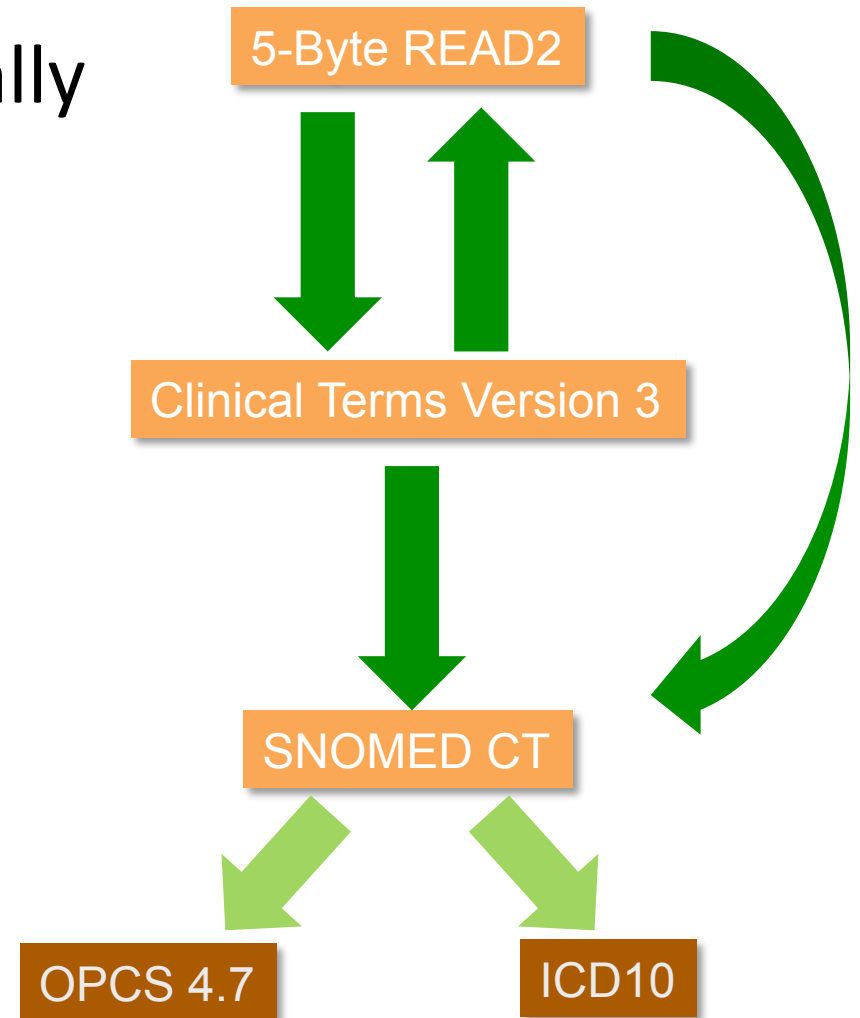
GP2GP

READ2 ↔ CTV3 ⇒ SNOMED

Summary Care Record

READ2 ⇒ SNOMED

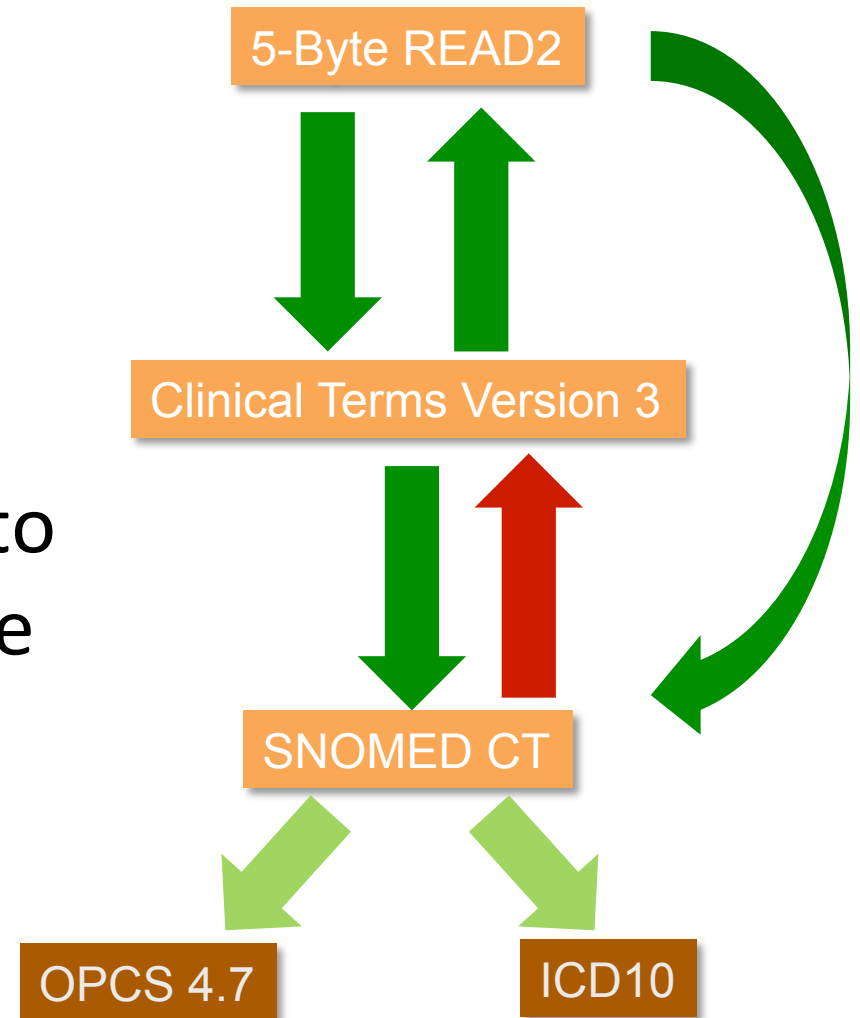
CTV3 ⇒ SNOMED



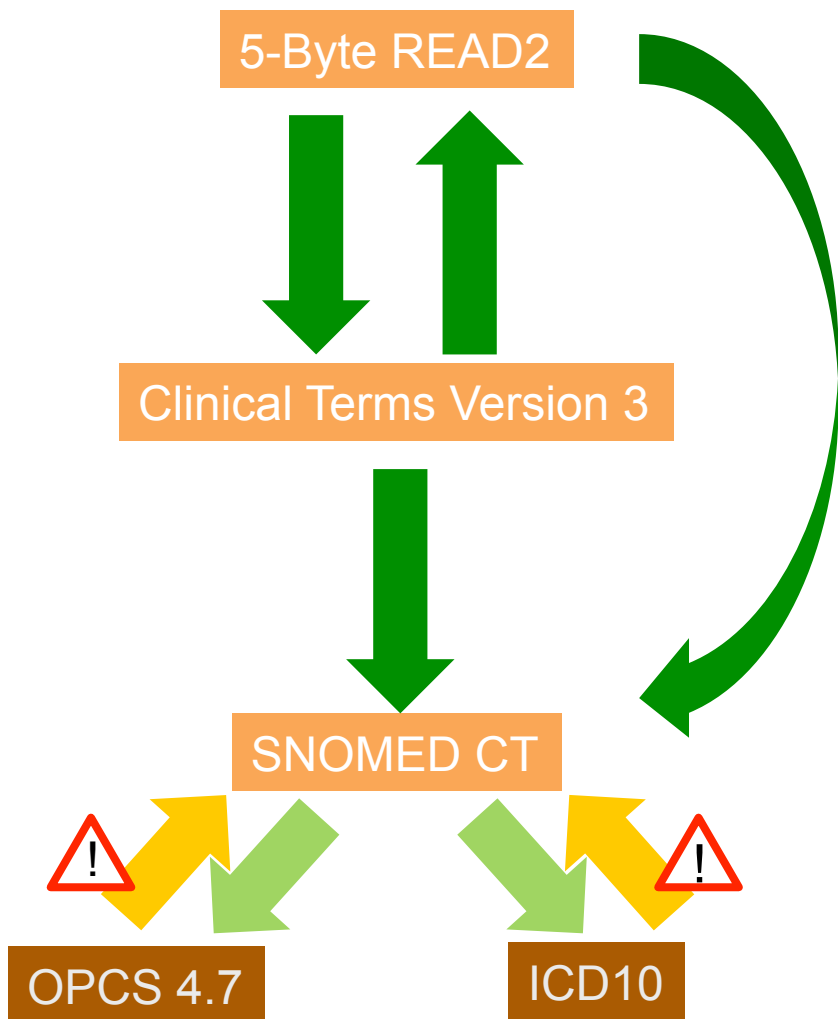
# Data Migration : Limitations

No map route back from SNOMED CT to legacy systems..

So comms from Hospital to Primary Care only possible if Primary Care data migrated to SNOMED CT



# Data extraction?



# Outline

Context: The UK legacy problem

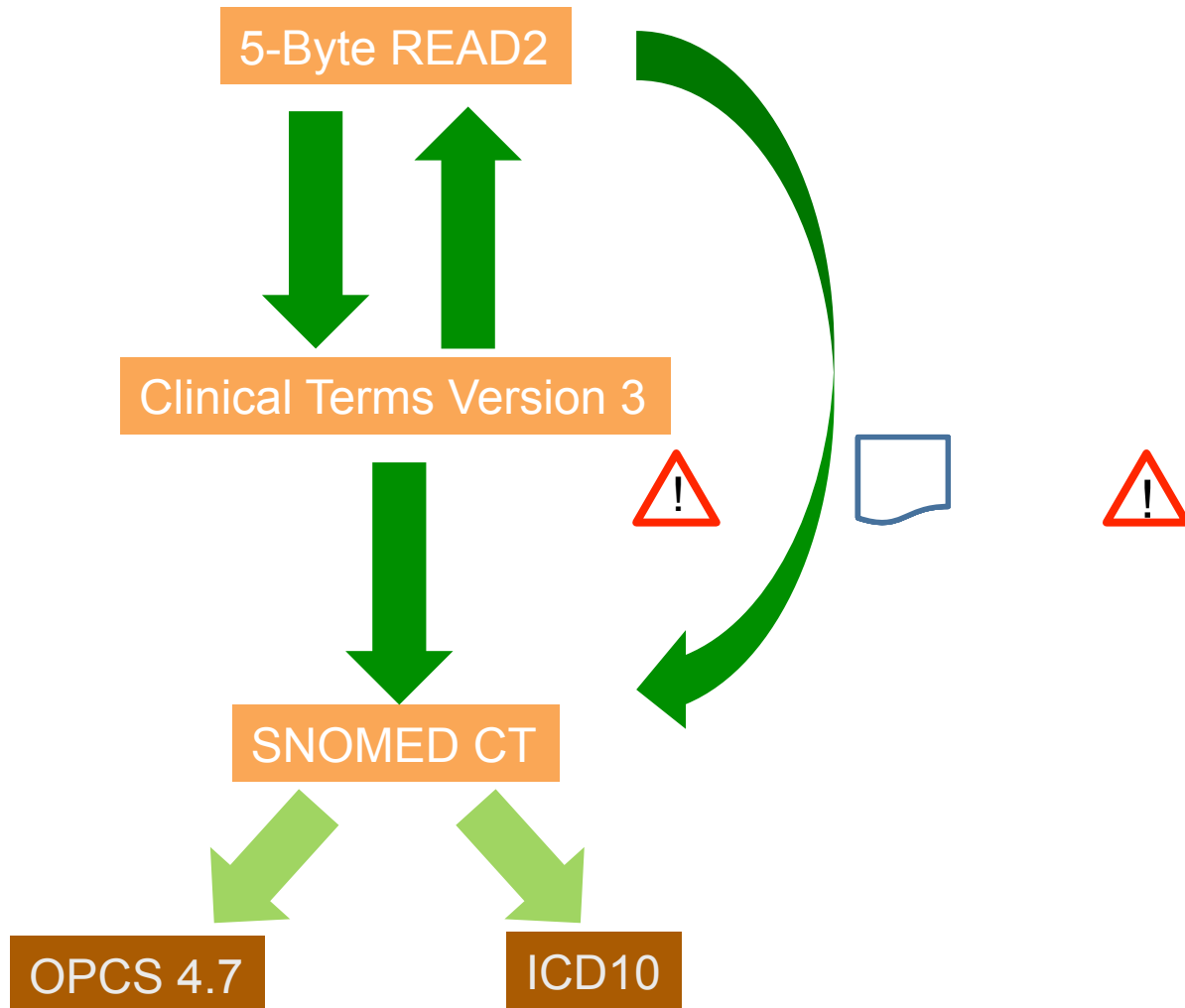
Crossmap construction and validation

Transcoding EPR data *and* queries

Demo

# Transcoding Queries

## One ring to rule them all...



# Transcoding of query specifications

## <<22298006 myocardial infarction (78 codes)

41711000000109; ;[X]Acute transmural myocardial infarction of unspecified site (disorder)  
444321000000101; ;[X]Subsequent myocardial infarction of other sites (disorder)  
409621000000103; ;[X]Subsequent myocardial infarction of unspecified site (disorder)  
194798004; ;Acute anteroapical infarction (disorder)  
52035003; ;Acute anteroapical myocardial infarction (disorder)  
62695002; ;Acute anteroapical myocardial infarction (disorder)  
194809007; ;Acute atrial infarction (disorder)  
1027300; ;Acute myocardial infarction  
5705400; ;Acute myocardial infarction NOS  
1753100; ;Acute anterolateral infarction  
2331100; ;Acute anterolateral myocardial infarction  
7032120; ;Other specified anterior myocardial infarction  
5432900; ;Acute anterolateral myocardial infarction NOS  
7032520; ;Acute anteroapical infarction  
7021100; ;Acute anteroapical myocardial infarction  
5906300; ;Acute anteroapical myocardial infarction NOS  
282006; ;Acute anteroapical myocardial infarction NOS  
6462700; ;Acute anteroapical myocardial infarction NOS  
7379500; ;Acute anteroapical myocardial infarction NOS  
7032510; ;Acute anteroapical myocardial infarction NOS  
6554700; ;Acute anteroapical myocardial infarction NOS  
7659300; ;Acute anteroapical myocardial infarction NOS  
5861200; ;Acute anteroapical myocardial infarction NOS  
7099800; ;Acute anteroapical myocardial infarction NOS  
1599000; ;Acute anteroapical myocardial infarction NOS  
7900900; ;Acute anteroapical myocardial infarction NOS  
3027700; ;Acute anteroapical myocardial infarction NOS  
2338280; ;Acute anteroapical myocardial infarction NOS  
2338260; ;Acute anteroapical myocardial infarction NOS  
2338300; ;Acute anteroapical myocardial infarction NOS  
2338320; ;Acute anteroapical myocardial infarction NOS  
2338340; ;Acute anteroapical myocardial infarction NOS  
2338370; ;Acute anteroapical myocardial infarction NOS  
3071400; ;Acute anteroapical myocardial infarction NOS  
4013140; ;Acute anteroapical myocardial infarction NOS  
2338380; ;Acute anteroapical myocardial infarction NOS  
2338270; ;Acute anteroapical myocardial infarction NOS  
2338250; ;Acute anteroapical myocardial infarction NOS  
2338290; ;Acute anteroapical myocardial infarction NOS

233831007; ;Acute Q wave infarction - inferolateral (disorder)  
233833005; ;Acute Q wave infarction - lateral (disorder)  
233836002; ;Acute Q wave infarction - widespread (disorder)  
914007; ;Acute Q wave myocardial infarction (disorder)  
914003; ;Acute ST segment elevation myocardial infarction (disorder)  
91000119103; ;Acute ST segment elevation myocardial infarction involving left anterior descending coronary artery (disorder)  
91000119100; ;Acute ST segment elevation myocardial infarction involving left main coronary artery (disorder)

G30.; ;Acute myocardial infarction  
G300.; ;Acute anterolateral infarction  
G301.; ;Other specified anterior myocardial infarction  
G3010.; ;Acute anteroapical infarction  
G30v1.; ;Acute papillary muscle infarction  
G30v2.; ;Acute septal infarction  
G30y1.; ;Acute myocardial infarction NOS  
G30y2.; ;Acute myocardial infarction NOS

### READ2

#### INCLUDE:

- << G30.. Acute myocardial infarction (code and all its descendants)
- << G31y1 Microinfarction of heart (code and all its descendants)
- << G32.. Old myocardial infarction (code and all its descendants)

### ICD10

#### INCLUDE:

- << I21 Acute myocardial infarction (descendants only but NOT also code itself)
  - << I22 Subsequent myocardial infarction (descendants only but NOT also code itself)
- #### EXCLUDE:
- << I248 Other forms of acute ischaemic heart disease (code and all its descendants)
  - << I252 Old myocardial infarction (code and all its descendants)

#### EXCLUDE:

-< No exclusion clauses >-

# Outline

Context: The UK legacy problem

Crossmap construction and validation

Transcoding data and queries

**Demo**

Google 'TRUD DATA MIGRATION'

**THANKYOU!**