

The National Guidelines of the 22 highlighted breast cancer recommendations delivered in a structured way to help developing decisions support

IHTSDO Showcase 2014


Lotti Barlow
Niklas Eklöf

01/11/2014



Responsibilities for the National Board of Health and Welfare

- National Information Structure
- National Health Classifications
- Swedish extension of SNOMED CT
- Coordination Centre for semantic interoperability within Sweden
- National Guidelines



Process model
Conceptual model
Information model

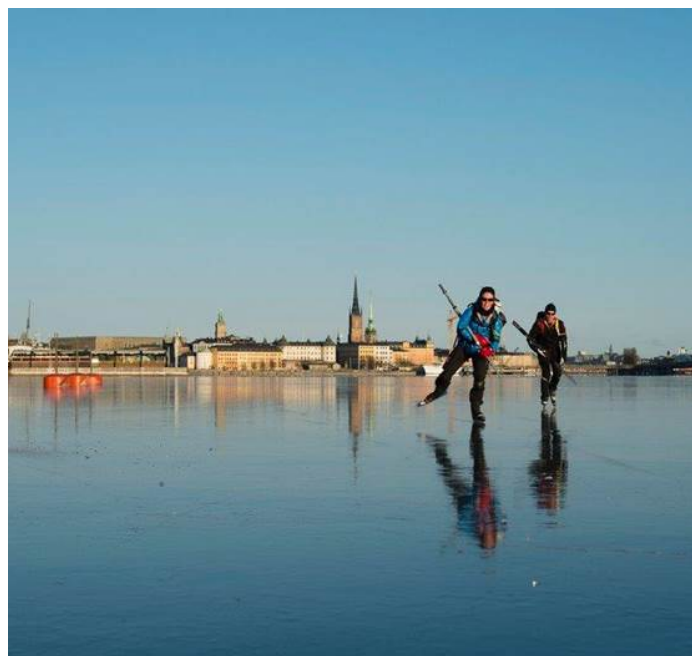
But

- We are not responsible for the implementations

Objectives of the project

The aim is to make the recommendations

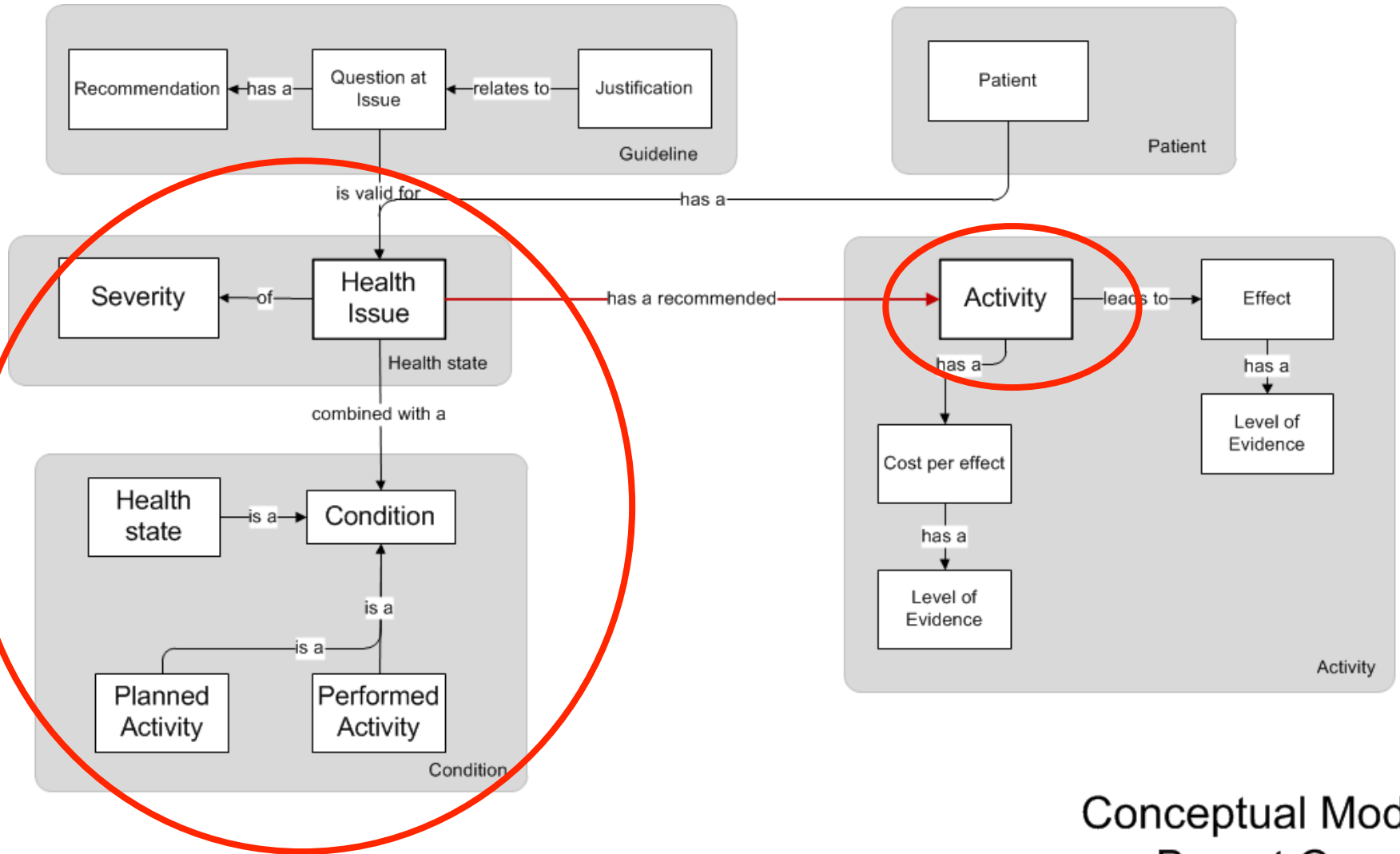
- **Functional in a digital system**
- **To be used by decision-makers when developing Clinical Decision Support Systems**
- **Usable for quality assessment on local and national level**



Results

- **Conceptual model**
- **Information model**
- **Mappings to**
 - SNOMED CT
 - ICD-10
 - The Swedish Procedure Classification





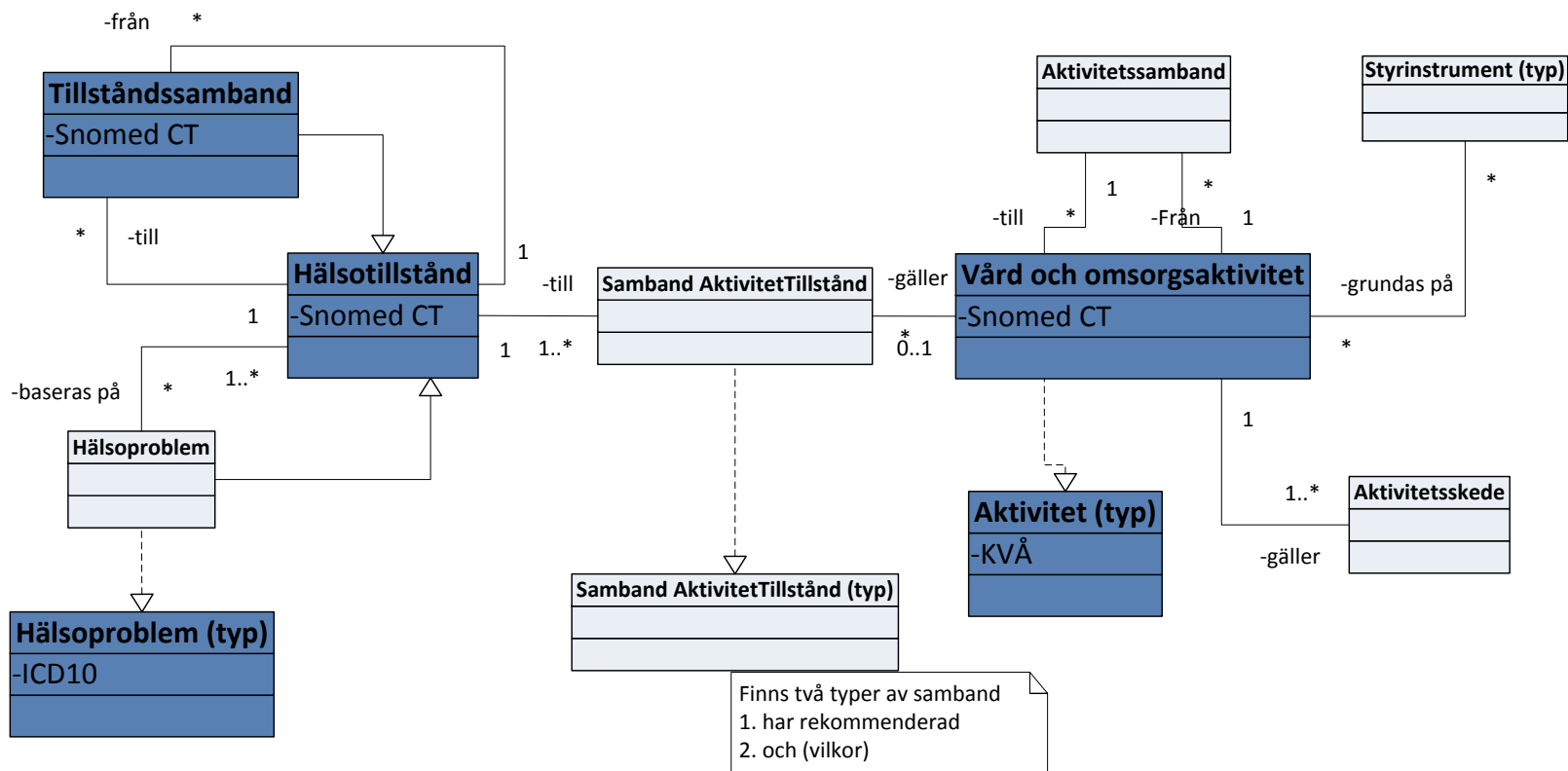
Conceptual Model Breast Cancer Guidelines

BEFORE

ID	Health Issue	Activity
B058b	Breast cancer, preformed surgery, hormone receptor positive malignant neoplasm, specimen involvement by matted nodes, postmenopausal	Aromatase inhibitor for 5 years

AFTER

ID	Health Issue	Condition Planned Activity	Condition Performed Activity	Condition Patient Information	Activity
B058b	Breast cancer, hormone receptor positive malignant neoplasm, specimen involvement by matted nodes		Breast cancer surgery	Postmenopausal	Aromatase inhibitor for 5 years



Information Model Breast Cancer Guidelines

Lessons learnt

- **Involving health care professionals**
 - Since this is not an IT-project
 - Changed mind sets on several levels
- **Structure the information before mapping**
 - Clarify what the information represents
- **Resulted in higher quality of the national guidelines**

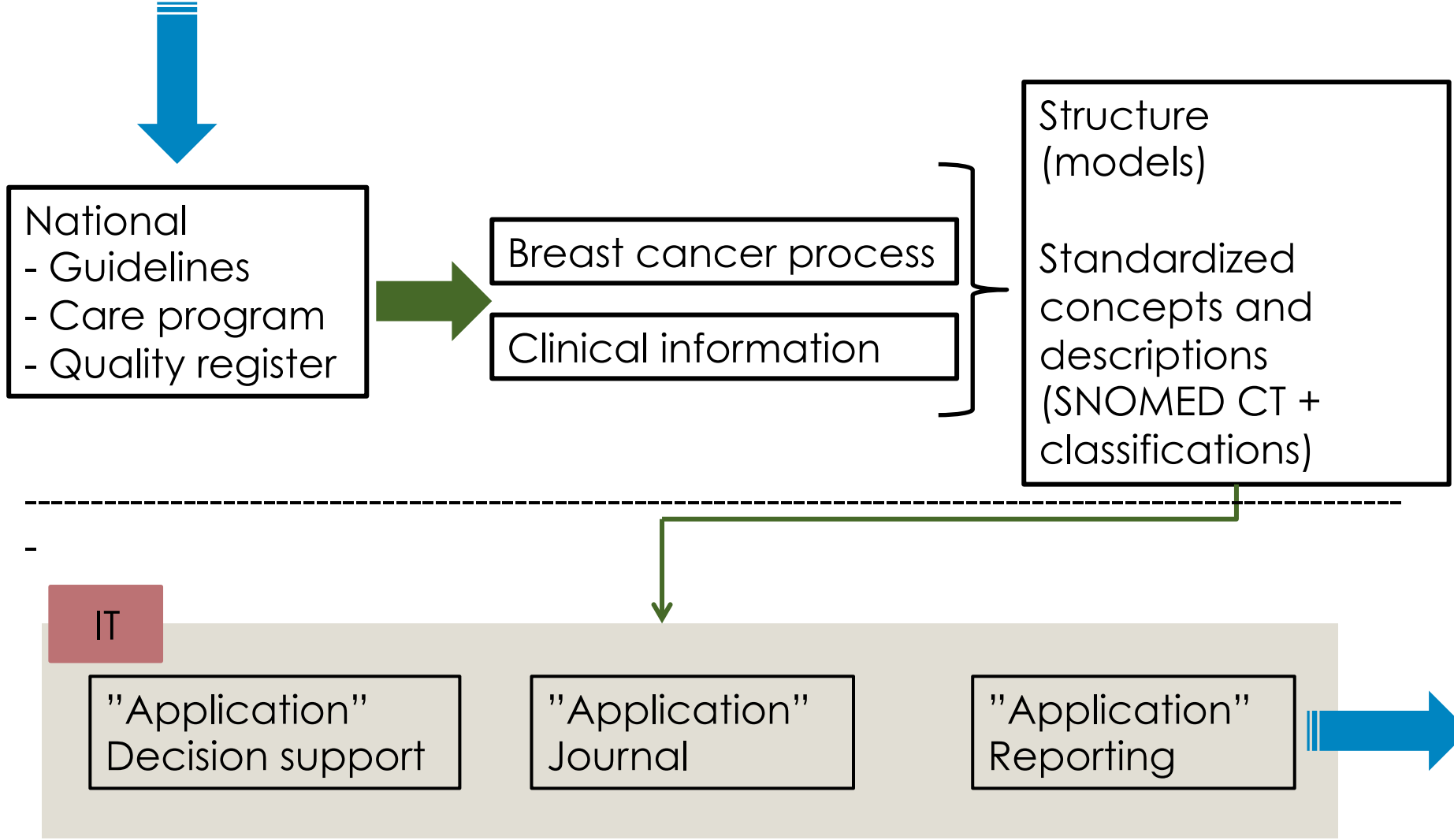
But there is a lot of work...



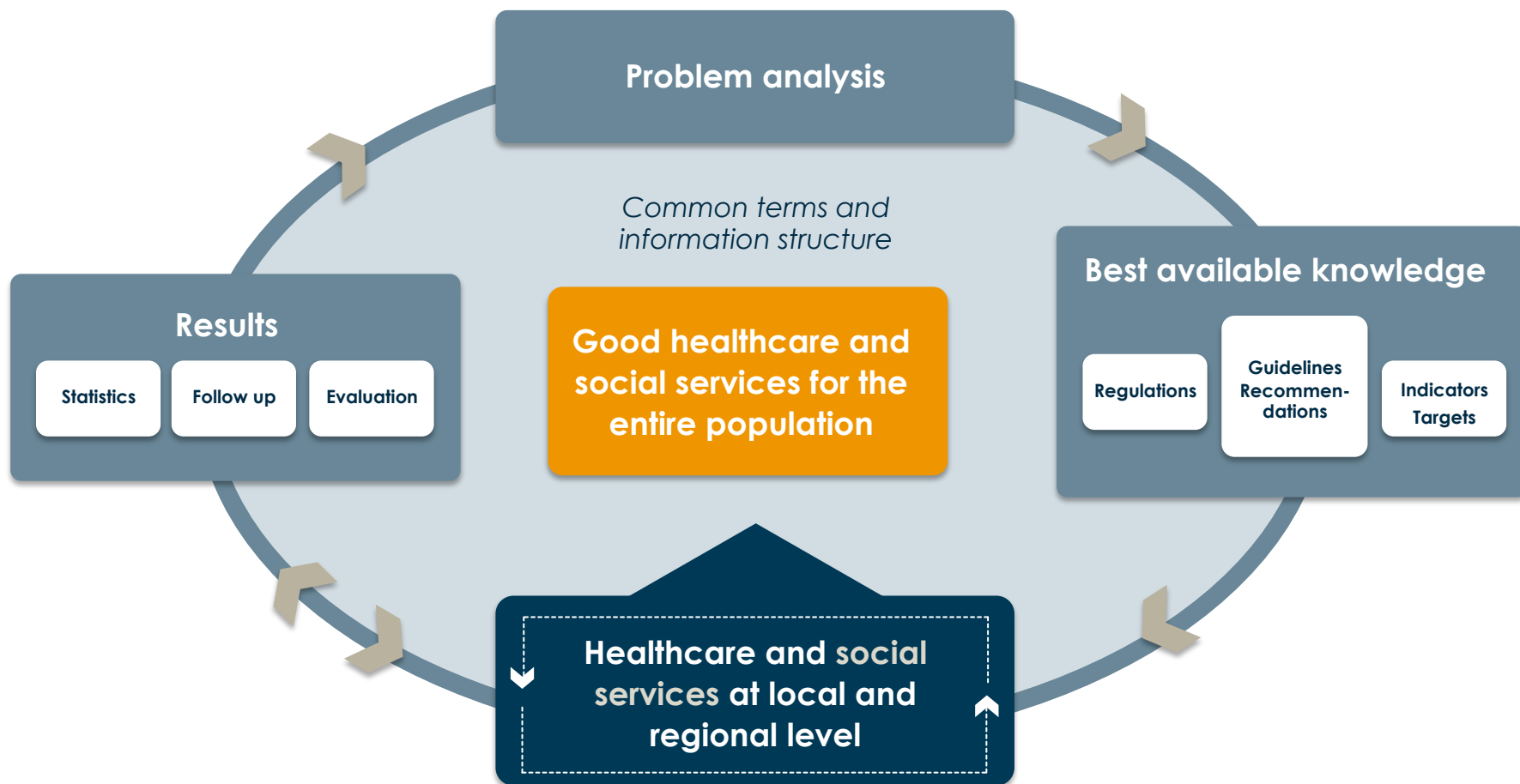
Next step

- to further test and develop the method

- **Cooperation with two Regional Cancer Centres (RCC) in Sweden (covering 41 % of the Swedish population)**
- **Using the process models for the patients journey when diagnosed with breast cancer developed by RCC:s**
- **Using clinical information materials covering the patient journey through the breast cancer process**
 - National Guidelines
 - National Breast Cancer Care Program
 - National Quality Register



Our model to develop good healthcare and social services



Decisions to make

- **Terminology binding between the information model and SNOMED CT**
- **IHTSDO:s mappings between SNOMED CT and ICD-10**
- **Pre or post coordinated SNOMED CT concepts**
- **Who should be responsible for the maintenance**

Main results will be

- A method that could be applied on other clinical areas
- Information model
- Refsets for breast cancer

Thank you for your attention!



Lotti Barlow



Niklas Eklöf

**For more information:
lotti.barlow@socialstyrelsen.se
niklas.eklof@socialstyrelsen.se**