

Towards Demonstrating the Clinical Value of SNOMED CT in Primary Care



Ronald Cornet & Dennis Lee

IHTSDO Implementation Showcase

Thursday, October 10, 2013

Outline

1. Research Question

- How can we demonstrate the clinical value of SNOMED CT?

2. SNOMED CT Clinical Value Framework

3. Materials

4. Methods, Results

- Completeness of Problem List
- Adherence of Care Guidelines
- Completeness of Clinical Summaries

5. Summary of Clinical Value of SNOMED CT

Canadian & Dutch Initiatives

- Canadian Institute for Health Information
 - EMR Content Standards
 - Primary Health Care Indicators
- Canada Health Infoway
 - Health System Use Project
 - Primary Health Care Reference Sets
 - Clinical Value Targets
- Dutch Healthcare Inspectorate / Quality Institute
 - Healthcare Quality Indicators
- Netherlands' Healthcare ICT Institute (Nictiz)
 - Healthcare information standards
 - Generic Dataset for Transitions of Care

Canada Health Infoway Clinical Value Targets

□ Clinical Value Target 1

General Data Use

- Enter encounter notes
- Enter problem lists

Data Capture

- Enter immunisations
- Enter vital stats
- Enter new or renewal prescriptions and print the prescription
- Generate automated alerts from within the EMR
- Generate automated reminders from within the EMR
- Receive laboratory results into the EMR
- Receive diagnostic imaging results into the EMR
- Access hospital records and encounter summaries from EMR
- Create referral letters or consultation reports

■ Clinical Value Target 2

Data Retrieval

- Clinician's use of an EMR
- Interoperability with drug information systems
- Clinician's use of electronic prescribing capability from EMR

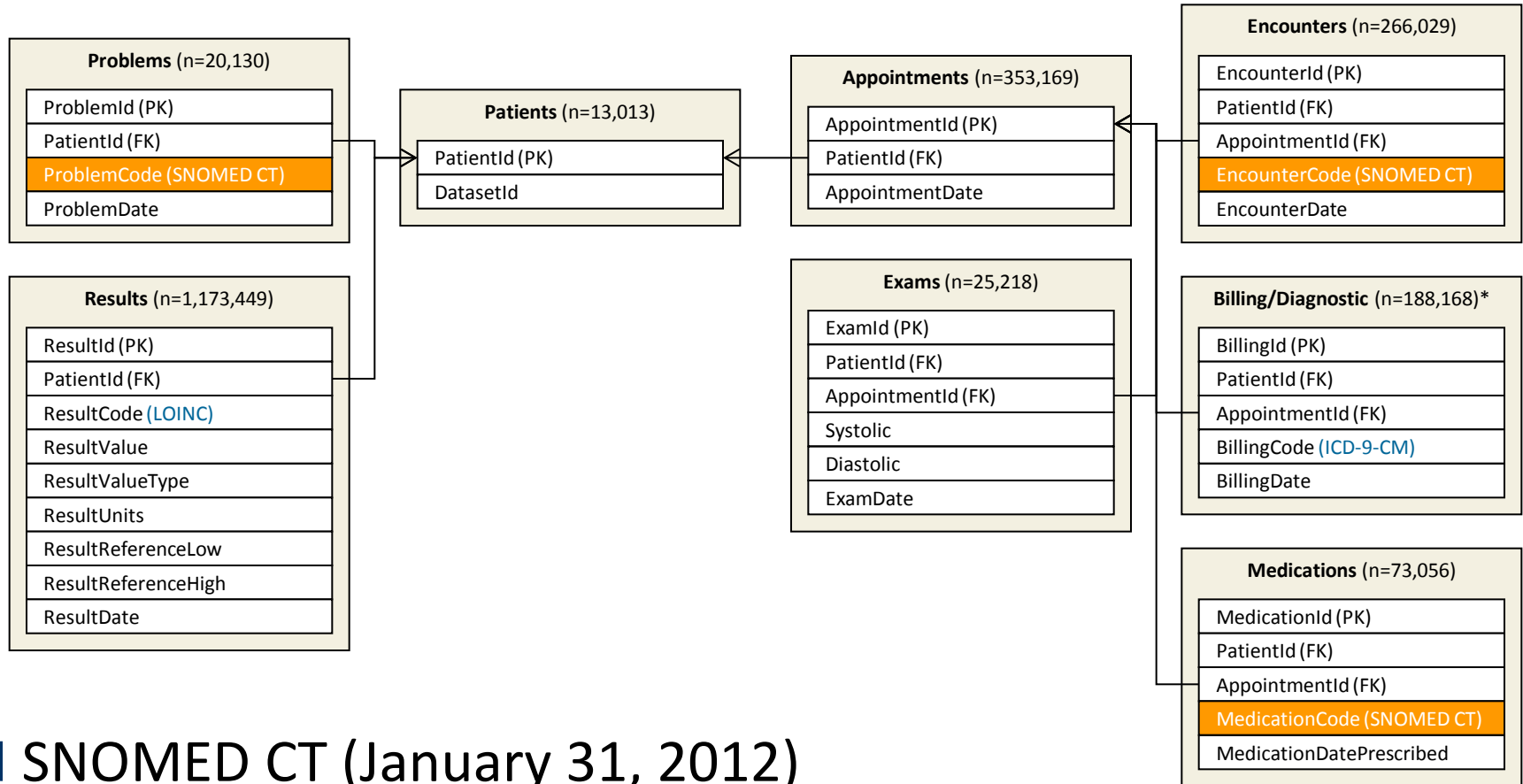
Data Sharing

SNOMED CT Clinical Value Framework

Data Uses / Data Use Targets	Patient	Practice	Population
Data Capture	<ul style="list-style-type: none"> ❑ Suggest diagnostic code based on encounter diagnosis ❑ Suggest encounter diagnosis based on diagnostic code ❑ Suggest adding encounter diagnosis to problem list 	<ul style="list-style-type: none"> ❑ Audit (critique) completeness of problem list and encounter diagnosis ❑ Audit (critique) accuracy of diagnostic codes 	<ul style="list-style-type: none"> ❑ Generate statistics on key clinical quality measures (CQM)
Data Retrieval	<ul style="list-style-type: none"> ❑ Alert clinicians to drug-allergy interactions ❑ Remind clinicians to order routine tests ❑ Suggest medications based on out of range test results 	<ul style="list-style-type: none"> ❑ Audit (critique) evidence-based guideline adherence ❑ Patient recall / patient case queries ❑ Assess patient conditions 	<ul style="list-style-type: none"> ❑ Compare quality of care between practice and population
Data Sharing	<ul style="list-style-type: none"> ❑ Generate patient clinical summary in the form of the Continuity of Care Document (CCD) 	<ul style="list-style-type: none"> ❑ Generate practice quality reports in the form of the Quality Reporting Document Architecture (QRDA) Category II and III 	<ul style="list-style-type: none"> ❑ Generate practice quality reports in the form of the Quality Reporting Document Architecture (QRDA) Category III

Materials

□ Anonymised Primary Care Dataset (3,298 active patients)



□ SNOMED CT (January 31, 2012)

□ Wright & Hahn papers

□ Continuity of Care Document (CCD)

Encoding Results

Encoding	Problem Lists		Encounter Diagnoses		Medications	
	Total	Unique	Total	Unique	Total	Unique
Number of Records	20,140	2,880	266,029	15,122	73,056	22,230
Fully encoded record	18,298	2,246	231,963	8,541	69,513	19,564
Partially encoded record	1,666	582	27,198	5,794	0	0
Fully unencoded record	177	43	6,149	779	3,543	2,666

❑ Problem Lists

- COPD
- 13645005 | Chronic obstructive lung disease (disorder) |

❑ Encounter Diagnoses

- Chronic neck pain
- 81680005 | Neck pain (finding) |:
263502005 | Clinical course (attribute) |=
90734009 | Chronic (qualifier value) |

❑ Medications

- Metformin (Glucophage) 500 mg PO BID
- 109081006 | Metformin (product) |

Methods Used to Demonstrate Clinical Value

No	Method	Data Use / Data Use Target	Problem	Encounter	Lab Result	Diag. (ICD-9-CM)	Medication	Examination
1.	Completeness of problem list ¹	Data Capture Practice	✓		✓	✓	✓	
2.	Adherence of care guidelines ²	Data Retrieval Practice	✓	✓	✓		✓	✓
3.	Completeness of clinical summaries	Data Sharing Patient	✓	✓				

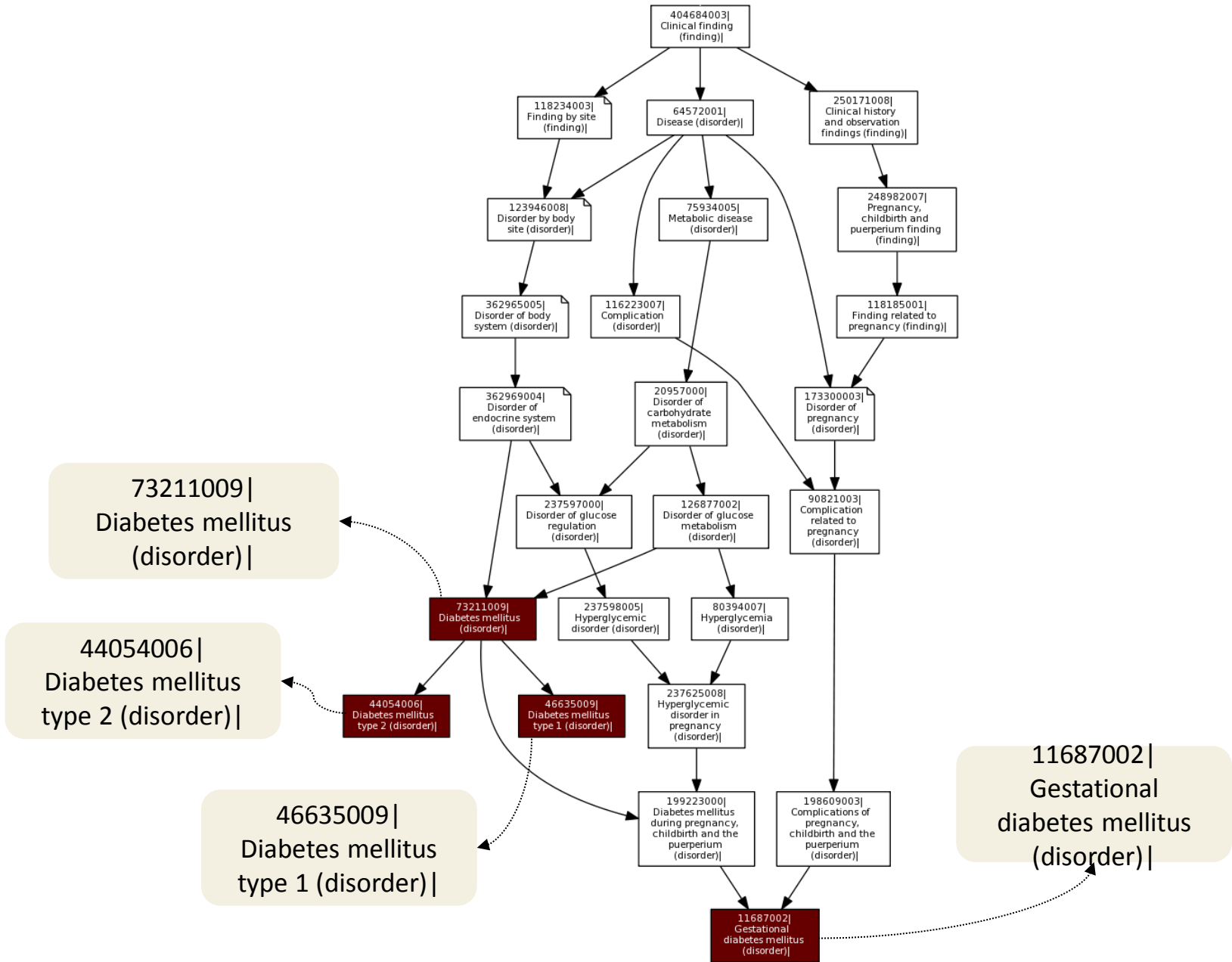
1. Wright A, et al. **A method and knowledge base for automated inference of patient problems from structured data in an electronic medical record.** J Am Med Inform Assoc. 2011 Nov-Dec;18(6):859-67.
2. Hahn KA, et al. **Diabetes flow sheet use associated with guideline adherence.** Ann Fam Med. 2008 May-Jun;6(3):235-8.

Completeness of Problem List

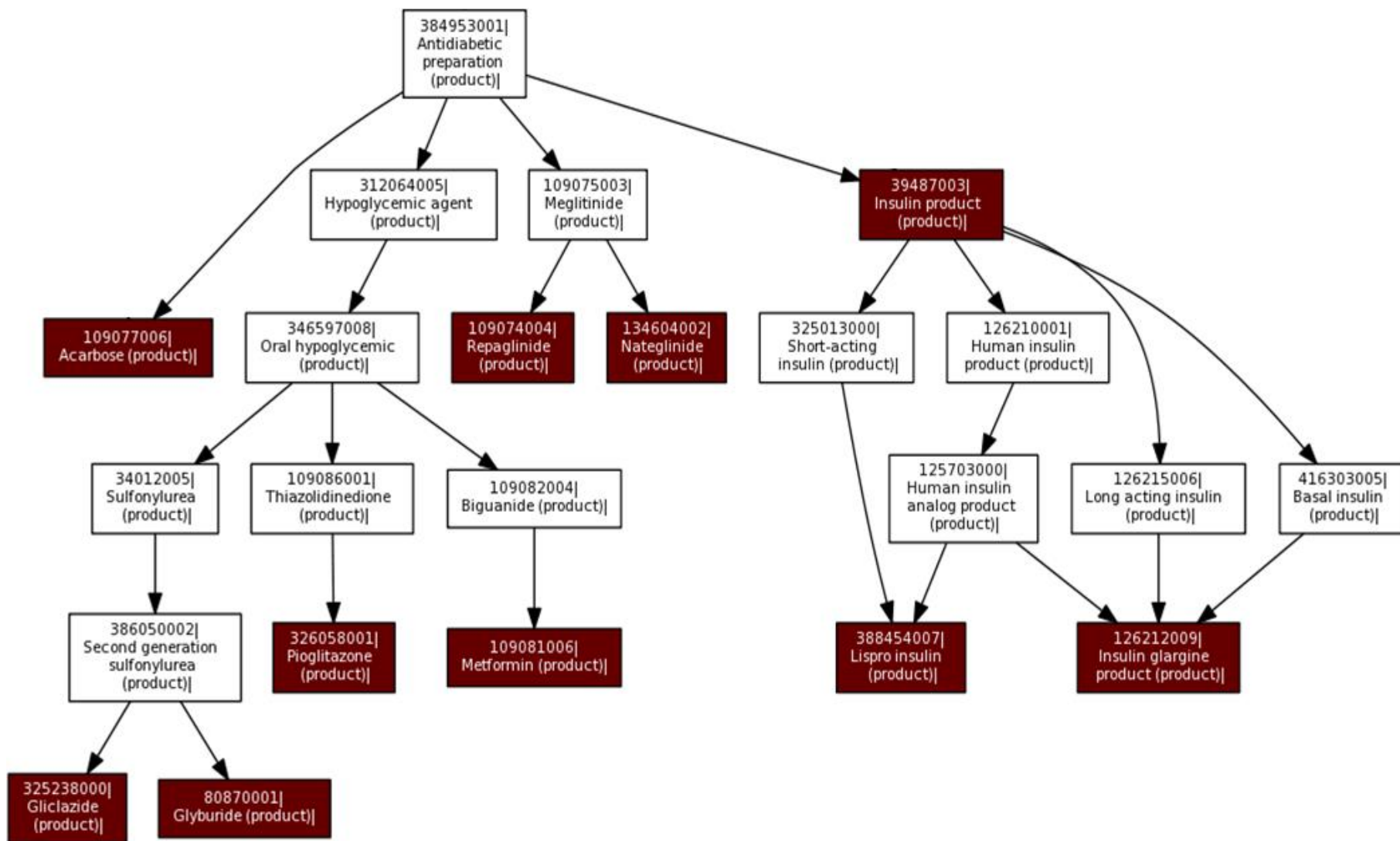
	Pt	Prac	Pop
Capture			
Retrieval			
Sharing			

- ❑ If patient meets one of these three definitions
 - Definition 1 – **Laboratory Results** (at least 1 occurrence)
 - ❑ Haemoglobin A1c/ Haemoglobin.total in Blood - (LOINC: 4548-4) ≥ 7
 - Definition 2 – **Billing Diagnostic Codes** (at least 2 occurrences)
 - ❑ Diabetes mellitus - (ICD-9-CM: 250) or one of its subtypes
 - Definition 3 – **Medications** (at least 1 occurrence)
 - ❑ ETC: 5886 – Injectable Antidiabetic Agents & 154 – Oral Antidiabetic Agents
 - ❑ SNOMED CT: 384953001 |Antidiabetic preparation (product)| & 373245004 |Antidiabetic agent (substance)|
- ❑ And do not have any of these problems
 - 21584002 |Syndrome of infant of diabetic mother (disorder)|
 - 9414007 |Impaired glucose tolerance (disorder)|
 - 73211009 |Diabetes mellitus (disorder)|
- ❑ Then suggest adding these problems:
 - Default problem
 - ❑ 73211009 |Diabetes mellitus (disorder)|
 - Additional options as related terms
 - ❑ 46635009 |Diabetes mellitus type 1 (disorder)|
 - ❑ 44054006 |Diabetes mellitus type 2 (disorder)|
 - ❑ 9414007 |Impaired glucose tolerance (disorder)|
 - ❑ 68256003 |Increased glucose level (finding)|
 - ❑ ...

Closer Look at Diabetes Concepts

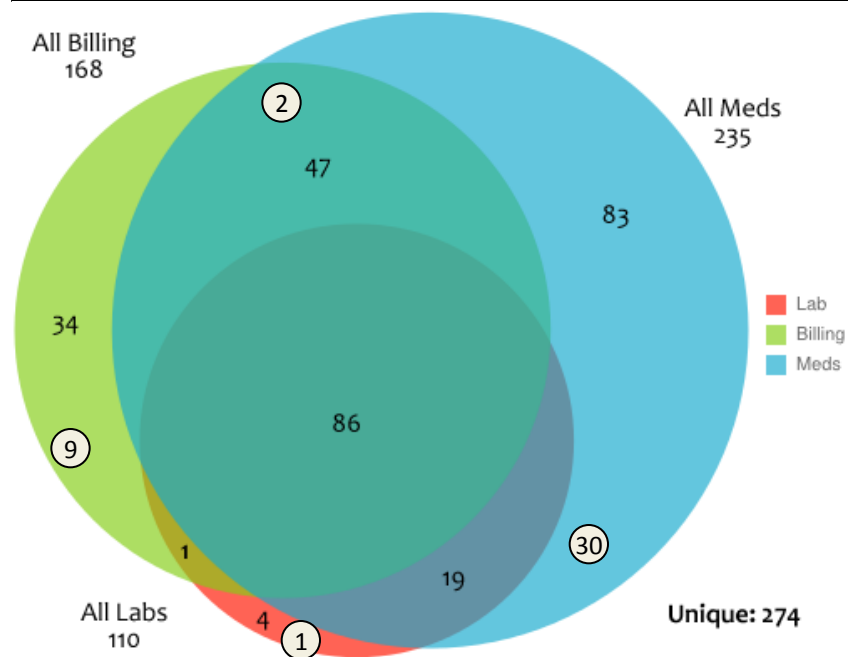


Closer Look at Antidiabetic Medications



Completeness of Problem List Results

No	Definition	Patients identified in definition	Patients without diabetes in problem list	Percent without diabetes in problem list
1.	Definition 1 (Laboratory results ≥ 1) Haemoglobin A1c ≥ 7	110	1	0.9%
2.	Definition 2 (Billing codes ≥ 2) Diabetes mellitus	168	11	6.5%
3.	Definition 3 (Medications ≥ 1) Antidiabetic medication	235	32	13.6%
	Total number of unique patients	274	42	15.3%



42 (15%) patients have at least one **Haemoglobin A1c ≥ 7** , at least two billing codes of **250**, or at least one **antidiabetic medication**, do not have diabetes on the problem list.

Adherence of Care Guidelines

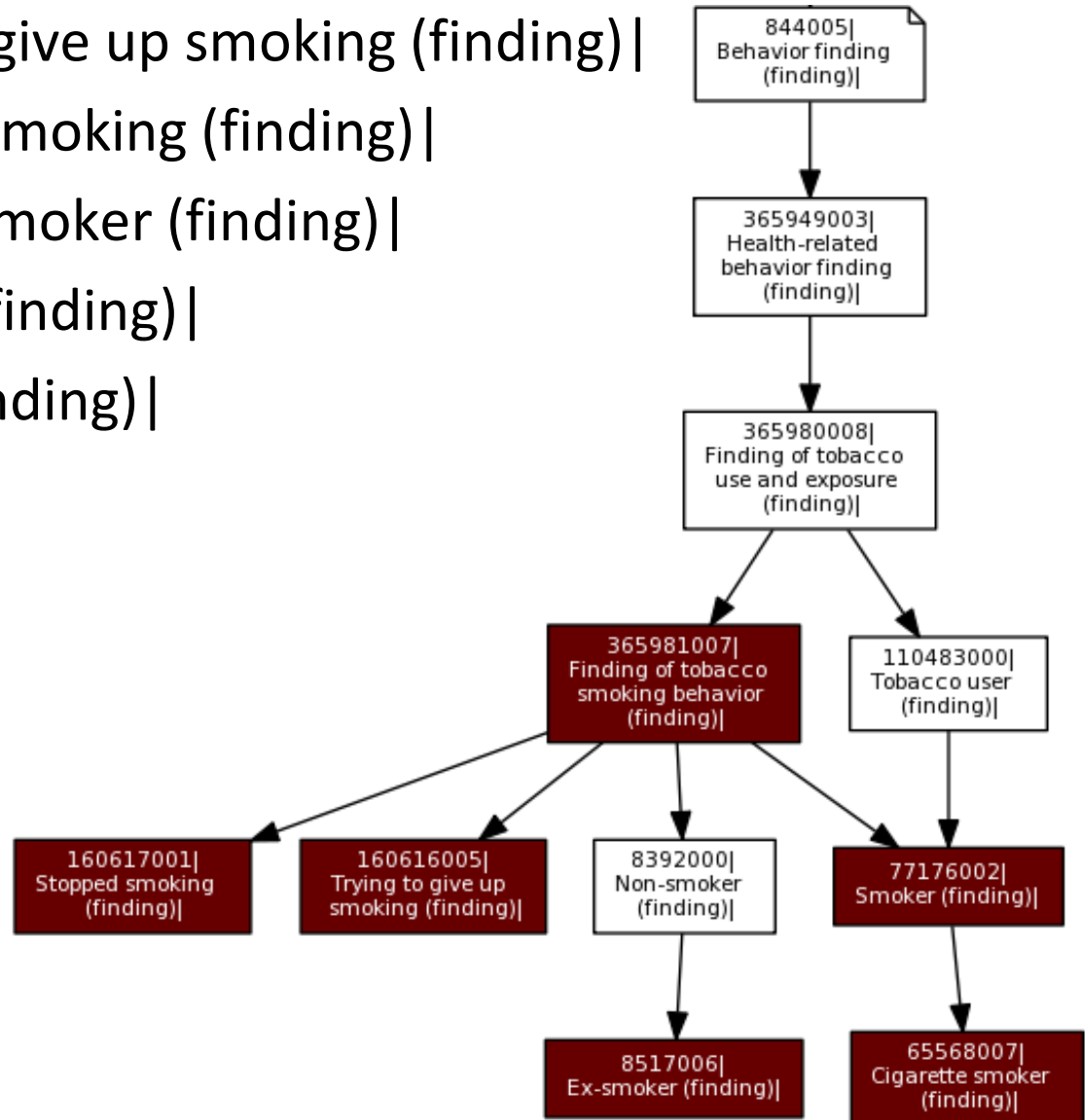
	Pt	Prac	Pop
Capture			
Retrieval			
Sharing			

- Diabetes **assessment scores** were based on documentation in the medical record of five assessments (20 points each):
 - Haemoglobin A1c level tested in the past six months
 - Urine microalbumin level tested in the past year
 - Low-density lipoprotein cholesterol (LDL-C) level tested in the past year
 - Smoking status
 - Blood pressure

- Diabetes **treatment scores** consisted of documentation in the medical record of 4 measures (25 points each):
 - Haemoglobin A1c level at or below 8% or use of a hypoglycemic agent
 - Urine microalbumin level below 30 mg/g (3.39 mg/mmol) or use of an angiotensin-converting enzyme (ACE) inhibitor or angiotensin II receptor blocker (ARB)
 - LDL-C below 100 mg/dL (2.59 mmol/L) or use of lipid-lowering agent
 - Blood pressure at or below 130/85 mm Hg or use of an antihypertensive agent

Smoking Status

- ❑ 365981007 | Finding of tobacco smoking behavior (finding) |
- ❑ 160616005 | Trying to give up smoking (finding) |
- ❑ 160617001 | Stopped smoking (finding) |
- ❑ 65568007 | Cigarette smoker (finding) |
- ❑ 8517006 | Ex-smoker (finding) |
- ❑ 77176002 | Smoker (finding) |



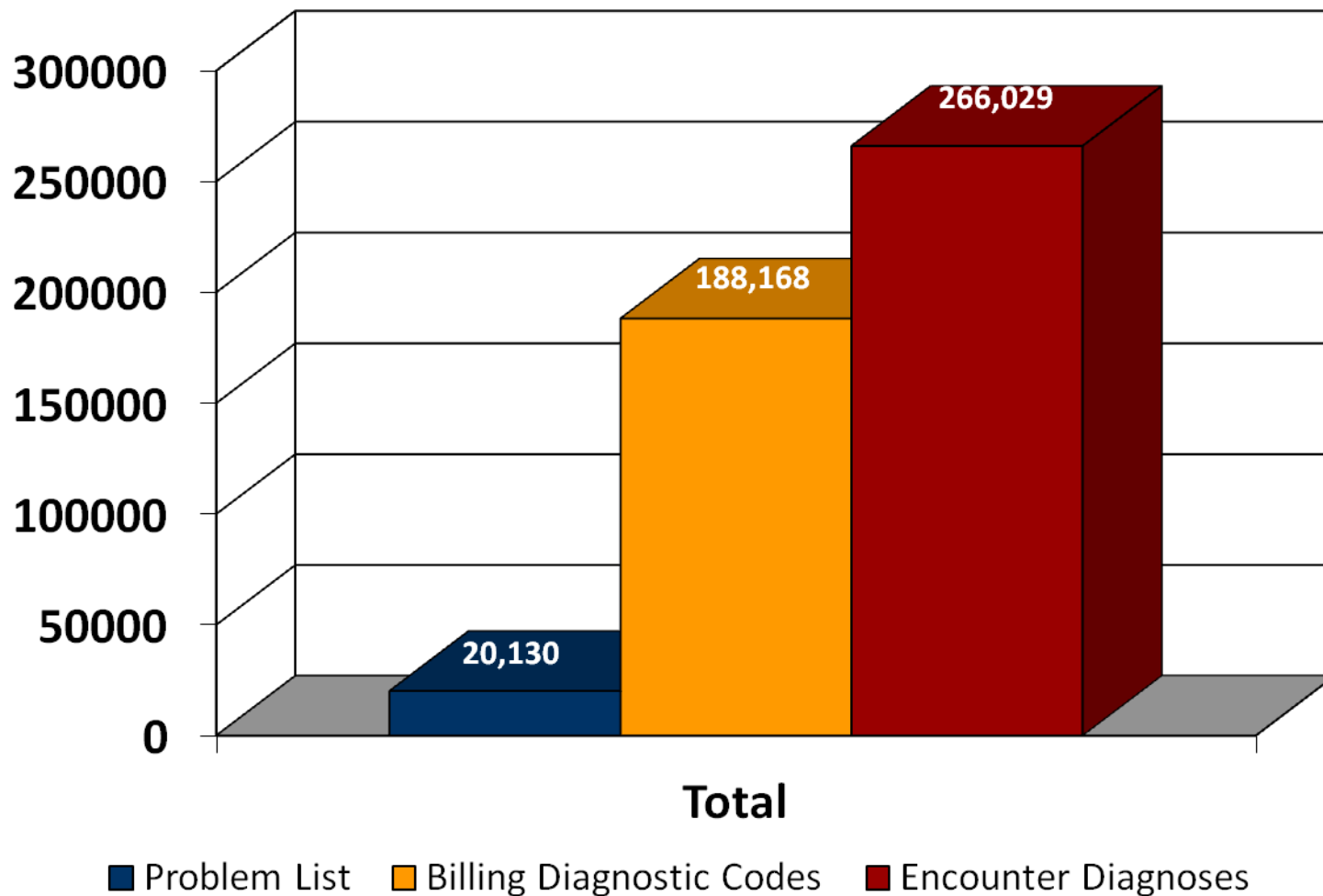
Adherence of Care Guidelines Results

	Criteria	Total	%
Assessment Scores (20 points per criteria; Overall average: 43.2)			
1.	Haemoglobin A1c level tested in the past six months	86	39.4%
2.	Urine microalbumin level tested in the past year	73	33.5%
3.	Low-density lipoprotein (LDL-cholesterol) level tested in the past year	129	59.2%
4.	Smoking Status	23	10.6%
5.	Blood pressure	160	73.4%
Criteria met: 5 (n=4, 1.8%), 4 (n=45, 20.6%), 3 (n=47, 21.6%), 2 (n=47, 21.6%), 1 (n=36, 16.5%), 0 (n=39, 17.9%)			
Treatment Scores (25 points per criteria; Overall average: 39.8)			
1.	Haemoglobin A1c level at or below 8% or use of a hypoglycemic agent	78	35.8%
2.	Urine microalbumin level below 30 mg/g creatine or use of an angiotensin-converting enzyme (ACE) inhibitor or angiotensin II receptor blocker (ARB)	58	26.6%
3.	LDL-cholesterol below 100 mg/dL or use of lipid-lowering agent	97	44.5%
4.	Blood pressure at or below 130/85 mm Hg or use of an antihypertensive agent	114	52.3%
Criteria met: 4 (n=21, 9.6%), 3 (n=34, 15.6%), 2 (n=57, 26.1%), 1 (n=47, 21.6%), 0 (n=59, 27.1%)			

Completeness of Clinical Summaries

	Pt	Prac	Pop
Capture			
Retrieval			
Sharing			

□ Where are most coded information found?

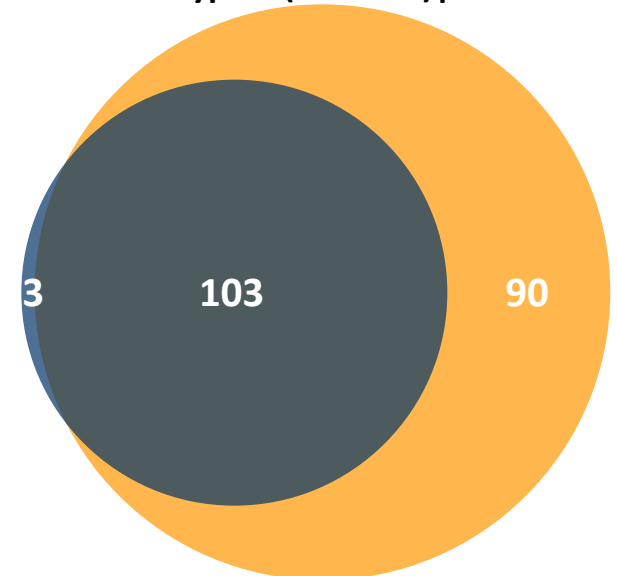
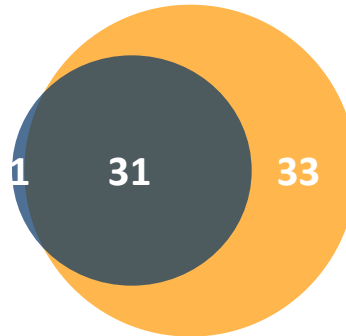
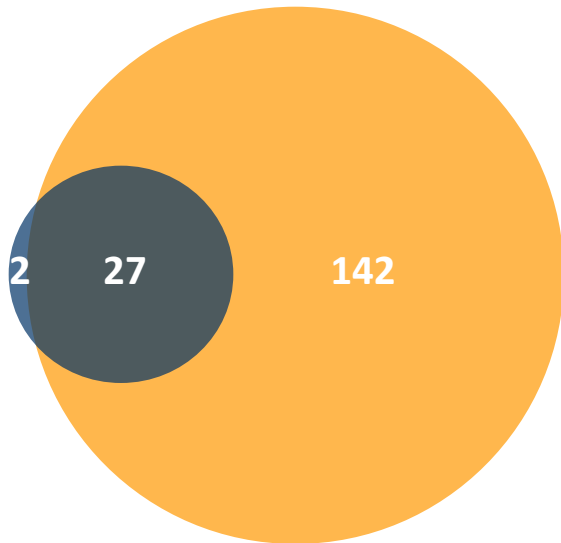


Closer Look at Problems and Encounters

73211009 | Diabetes mellitus (disorder) |

46635009 | Diabetes mellitus type 1 (disorder) |

44054006 | Diabetes mellitus type 2 (disorder) |



Total Patients: 171
(19% overlap)

Total Patients: 65
(48% overlap)

Total Patients: 196
(53% overlap)

 Problem List

 Encounter Diagnoses

Continuity of Care Document Sections

<p>2.16.840.1.113883.10.20.1.13</p> <p>Summary Purpose</p>	<p>2.16.840.1.113883.10.20.1.9</p> <p>Payers</p>	<p>2.16.840.1.113883.10.20.1.1</p> <p>Advance Directive</p> <ul style="list-style-type: none">• Include: 365870005 Finding of resuscitation status (finding) 	<p>2.16.840.1.113883.10.20.1.5</p> <p>Functional Status</p> <ul style="list-style-type: none">• Include: 105501005 Dependence on enabling machine or device (finding)
<p>2.16.840.1.113883.10.20.1.11</p> <p>Problems</p> <ul style="list-style-type: none">• Include: 64572001 Disease (disorder) • Exclude: 281647001 Adverse reaction (disorder) 	<p>2.16.840.1.113883.10.20.1.4</p> <p>Family History</p> <ul style="list-style-type: none">• Include: 57177007 Family history with explicit context (situation) 	<p>2.16.840.1.113883.10.20.1.15</p> <p>Social History</p> <ul style="list-style-type: none">• Include: 365949003 Health-related behavior finding (finding) 	<p>2.16.840.1.113883.10.20.1.2</p> <p>Allergies, Adverse Reactions & Alerts</p> <ul style="list-style-type: none">• Include: 281647001 Adverse reaction (disorder) • Include: 420134006 Propensity to adverse reactions (disorder)
<p>2.16.840.1.113883.10.20.1.8</p> <p>Medications</p> <ul style="list-style-type: none">• Include: 373873005 Pharmaceutical / biologic product (product) 	<p>2.16.840.1.113883.10.20.1.7</p> <p>Medical Equipment</p> <ul style="list-style-type: none">• Include: 303607000 Biomedical equipment (physical object) 	<p>2.16.840.1.113883.10.20.1.6</p> <p>Immunisations</p> <ul style="list-style-type: none">• Include: 127785005 Administration of substance to produce immunity, either active or passive (procedure) 	<p>2.16.840.1.113883.10.20.1.16</p> <p>Vital Signs</p> <ul style="list-style-type: none">• Include: 118227000 Vital signs finding (finding)
<p>2.16.840.1.113883.10.20.1.14</p> <p>Results</p> <ul style="list-style-type: none">• Include: 442618008 Abnormal finding on evaluation procedure (finding) 	<p>2.16.840.1.113883.10.20.1.12</p> <p>Procedures</p> <ul style="list-style-type: none">• Include: 387713003 Surgical procedure (procedure) 	<p>2.16.840.1.113883.10.20.1.3</p> <p>Encounters</p>	<p>2.16.840.1.113883.10.20.1.10</p> <p>Plan of Care</p> <ul style="list-style-type: none">• Include: 243120004 Regimes and therapies (regime/therapy)

Completeness of Clinical Summaries Results

Summary Purpose	Payers	Advance Directive (30) 304253006 Not for resuscitation (finding)	Functional Status N/A
Problems (*) 73211009 Diabetes mellitus (disorder)	Family History (80) 312824007 Family history of cancer of colon (situation)	Social History (4.2k) 65568007 Cigarette smoker (finding)	Allergies, Adverse Reactions & Alerts (130) 292055008 Codeine adverse reaction (disorder)
Medications N/A	Medical Equipment (100) 87405001 Cane, device (physical object)	Immunisations (2.4k) 86198006 Influenza vaccination (procedure)	Vital Signs (500) 61086009 Pulse irregular (finding)
Results (70) 313172000 Colonoscopy abnormal (finding)	Procedures (800) 52734007 Total replacement of hip (procedure)	Encounters	Plan of Care (2.2k) 67516001 Detoxification therapy (regime/therapy)

Sample Encounter Diagnoses

- 66590003 | Alcohol dependence (disorder) |
- 128869009 | Infestation by *Sarcoptes scabiei* var *hominis* (disorder) |
- 223475005 | Consulting with (procedure) |
- 54150009 | Upper respiratory infection (disorder) |
- 225358003 | Wound care (regime/therapy) |
- 117614 | Wound care (regime/therapy) | review by pathologist (procedure) |
- 48532005 | Muscle strain (disorder) |
- 18070006 | Impacted cerumen (disorder) |
- 16932000 | Nausea and vomiting (disorder) |
- 62315008 | Diarrhea (finding) |
- 103742009 | Renewal of prescription (procedure) |
- 427898007 | Infection of tooth (disorder) |
- 271737000 | Anemia (disorder) |
- 8943002 | Weight gain finding (finding) |
- 43116000 | Eczema (disorder) |
- 19943007 | Cirrhosis of liver (disorder) |
- 235595009 | Gastroesophageal reflux disease (disorder) |
- 39898005 | Sleep disorder (disorder) |
- 191997003 | Persistent insomnia (disorder) |
- 49727002 | Cough (finding) |
- 10743008 | Irritable bowel syndrome (disorder) |
- 299709002 | Dental abscess (disorder) |
- 4556007 | Gastritis (disorder) |
- 422587007 | Nausea (finding) |
- 61582004 | Allergic rhinitis (disorder) |
- 418363000 | Itching of skin (finding) |
- 191813001 | Chronic alcoholism in remission (disorder) |
- 89362005 | Weight loss finding (finding) |

- 182782007 | Dermatitis (disorder) |
- 248342006 | Underweight (finding) |
- 74506000 | Bereavement due to life event (finding) |
- 60442001 | Perforation of tympanic membrane (disorder) |
- 79890006 | Loss of appetite (finding) |
- 45007003 | Low blood pressure (disorder) |
- 236071009 | Chronic diarrhea (disorder) |
- 25374005 | Gastroenteritis (disorder) |
- 276444007 | Generalized pruritus (finding) |
- 69322001 | Psychotic disorder (disorder) |
- 30037006 | Anal fissure (disorder) |
- 371088008 | Reactive airways dysfunction syndrome (disorder) |
- 426232007 | Environmental allergy (disorder) |
- 228221002 | Problem drinker (finding) |
- 200936003 | Lupus erythematosus (disorder) |
- 396550006 | Blood test (procedure) |
- 429196001 | Partial obstruction of small bowel (disorder) |
- 68154008 | Chronic cough (finding) |
- 14760008 | Constipation (disorder) |
- 68566005 | Urinary tract infectious disease (disorder) |
- 417746004 | Traumatic injury (disorder) |
- 266261006 | Raynaud's phenomenon (finding) |
- 271823003 | Tachypnea (finding) |

- 55464009 | Systemic lupus erythematosus (disorder) |
- 292055008 | Codeine adverse reaction (disorder) |
- 28560005 | Hypovolemia (disorder) |
- 33688009 | Cholestasis (finding) |
- 43275000 | Otitis (disorder) |
- 37610005 | Inflammation of cervix (disorder) |
- 281255004 | Small bowel obstruction (disorder) |
- 271739002 | Wax in ear canal (finding) |
- 235494005 | Chronic pancreatitis (disorder) |
- 83414005 | Macrocytic anemia (disorder) |
- 48813009 | Lymphocytopenia (disorder) |
- 243114000 | Support (regime/therapy) |
- 281032009 | Well woman health check (procedure) |
- 385955003 | Foot care (regime/therapy) |
- 363490000 | Codeine adverse reaction (disorder) |
- 3135009 | Otitis externa (disorder) |
- 414521009 | Internal hordeolum (disorder) |
- 20928004 | Ulcer of anus (disorder) |
- 68653001 | Anal pain (finding) |
- 77880009 | Rectal pain (finding) |
- 86198006 | Influenza vaccination (procedure) |
- 12866006 | Pneumococcal vaccination (procedure) |

Improved Organisation

- ❑ Allergies, Adverse Reactions and Alerts
 - 292055008|Codeine adverse reaction (disorder)|
 - 426232007|Environmental allergy (disorder)|
- ❑ Social History
 - 228281002|Problem drinker (finding)|
- ❑ Immunisation
 - 86198006|Influenza vaccination (procedure)|
 - 12866006|Pneumococcal vaccination (procedure)|
- ❑ Vital Signs
 - 271823003|Tachypnea (finding)|
- ❑ Plan of Care
 - 225358003|Wound care (regime/therapy)|
 - 385955003|Foot care (regime/therapy)|
- ❑ Problem (Sample)
 - 54150009|Upper respiratory infection (disorder)|
 - 19943007|Cirrhosis of liver (disorder)|
 - 10743008|Irritable bowel syndrome (disorder)|
 - 371088008|Reactive airways dysfunction syndrome (disorder)|
 - 68566005|Urinary tract infectious disease (disorder)|
 - 281255004|Small bowel obstruction (disorder)|

Summary of Clinical Value of SNOMED CT

- ❑ Improved Completeness
 - Data Capture
- ❑ Simplified Retrieval
 - Data Retrieval
- ❑ Improved Organisation
 - Data Sharing