



Leading healthcare
terminology, worldwide

SNOMED CT Machine Readable Concept Model Specification

Version 1.0

Latest web browsable version: <http://snomed.org/mrcm>

SNOMED CT document library: <http://snomed.org/doc>

Publication date: 2017-08-17

Table of Contents

1. Introduction.....	5
2. Use Cases.....	8
3. Requirements.....	11
4. Logical Design.....	13
5. Distribution Format.....	15
5.1 MRCM Domain Reference Set.....	15
5.2 MRCM Attribute Domain Reference Set.....	24
5.3 MRCM Attribute Range Reference Set.....	28
5.4 MRCM Module Scope Reference Set.....	32
6. Considerations.....	34



Leading healthcare
terminology, worldwide

The **SNOMED CT Machine Readable Concept Model (MRCM)** represents the SNOMED CT concept model rules in a form that can be read and tested by a computer. A human readable version of the SNOMED CT concept model can be found in the SNOMED CT Editorial Guide (<http://snomed.org/eg>), along with additional guidance for SNOMED CT authors. A computable version of the MRCM is published as a set of reference sets in the SNOMED CT international edition.

This specification defines the format used by SNOMED International's MRCM. This format uses the **SNOMED CT Reference Set** mechanism to provide a file structure with inbuilt versioning, and the **Expression Constraint Language** to represent intensional SNOMED CT subsets referred to by the concept model rules. This allows distribution of the MRCM using standard RF2 reference set files and interpretation of the rules using tools that support the SNOMED CT Expression Constraint Language.

Web browsable version: <http://snomed.org/mrcm>

SNOMED CT Document Library: <http://snomed.org/doc>

© Copyright 2017 International Health Terminology Standards Development Organisation, all rights reserved.

This document is a publication of International Health Terminology Standards Development Organisation, trading as SNOMED International. SNOMED International owns and maintains SNOMED CT®.

Any modification of this document (including without limitation the removal or modification of this notice) is prohibited without the express written permission of SNOMED International. This document may be subject to updates. Always use the latest version of this document published by SNOMED International. This can be viewed online and downloaded by following the links on the front page or cover of this document.

SNOMED®, SNOMED CT® and IHTSDO® are registered trademarks of International Health Terminology Standards Development Organisation. SNOMED CT® licensing information is available at <http://snomed.org/licensing>. For more information about SNOMED International and SNOMED International Membership, please refer to <http://www.snomed.org> or contact us at info@snomed.org.



1. Introduction

Background

SNOMED CT is a clinical terminology with a comprehensive scope covering a wide range of clinical specialties and requirements. The SNOMED CT Concept Model is a set of rules that govern the ways in which SNOMED CT concepts are permitted to be modelled using relationships to other concepts. These rules are critical to the consistent modelling of SNOMED CT content, which in turn determines the extent to which reproducible logical inferences can be drawn. These logical inferences are the foundation for effective use of SNOMED CT for retrieval and reuse of clinical information.

The Machine Readable Concept Model (MRCM) represents rules in the SNOMED CT concept model in a form that can be read by a computer and applied to test that concept definitions and expressions comply with the rules. The MRCM may be used for a variety of purposes, including the authoring and validation of SNOMED CT concepts, expressions, expression constraints and queries, Natural Language Processing and terminology binding to support semantic interoperability.

History

In 2007, IHTSDO approved a project to develop a prototype MRCM for SNOMED CT. In 2009, a MRCM draft release 0.1 was published containing 234 constraints, including domain, range and cardinality constraints. This draft MRCM was released in two formats - an XML representation, and a set of MS-Access 2007 database files. It also came with a prototype MRCM browser and editor written in MS-Access.

Since then, two important developments have occurred. Firstly, in 2012 a new standard distribution format for SNOMED CT (Release Format 2) began to be used. Release Format 2 (RF2) included a few key enhancements, including more robust and consistent version representation, an extensibility mechanism called 'reference sets', and a new hierarchy to represent metadata about the structure of SNOMED CT. Secondly, in 2015, the first official version of the Expression Constraint Language was published, replacing earlier informal constraint representations. These two developments have provided the opportunity for the SNOMED CT MRCM to be developed in a more standardized, consistent and version controlled way than was previously possible.

In January 2017, the beta release of the international SNOMED CT MRCM was published, and a period of community evaluation followed.

The first production version of the international SNOMED CT MRCM will be released as part of the July release (20170731) of the SNOMED CT international edition.

Purpose

The purpose of this document is to define and describe the structural design of the SNOMED CT MRCM, and to discuss the background and considerations that were taken into account during its design.

Scope

This document presents the specification of the SNOMED CT MRCM, including the reference sets and attributes used to represent and distribute the international SNOMED CT MRCM. It also documents the background, use cases, requirements and design considerations, including versioning and extensibility of the MRCM.

While the document refers to the RF2 format and the Expression Constraint Language, the specification of these standards are out of scope. Additionally, this document does not go into details about how to implement the MRCM within a terminology authoring or Electronic Health Record environment.

The scope of the MRCM includes rules that define the domain, range, cardinality and groupability of each attribute in the SNOMED CT concept model. Other related information, such as property chains (including attribute transitivity), expression templates for authoring, and description templates are not within the scope of the MRCM.

Audience

The target audiences of this document include:


- SNOMED National Release Centers;
- SNOMED CT terminology developers, including content authors, concept model designers, map developers, subset and constraint developers and release process managers;
- SNOMED CT implementation designers and developers, including designers and developers of EHR systems, terminology services, decision support systems, retrieval and analysis systems, and healthcare information standards.

Document Overview

This document presents the design of the SNOMED CT MRCM. Chapter 2 begins by describing the use cases in which it is anticipated that the SNOMED CT MRCM may be used. Chapter 3 then describes the requirements used to guide the MRCM design. The logical design of the MRCM is then described in Chapter 4, followed by the design of the reference sets used to distribute the MRCM rules in Chapter 5. Chapter 6 then discusses a range of topics that were considered in the design of the MRCM.

Glossary

The following table contains the definition of terms used within this document. Please refer to the [SNOMED Glossary](#) for additional definitions.

Term	Definition
Compositional Grammar	The set of rules that govern the way in which SNOMED CT expressions are represented as a plain text string.
Concept Model	A set of rules that determines the permitted sets of relationships between particular types of concepts.
Domain	The set of concepts which may be refined using a given attribute. 
Expression	A structured combination of one or more concept identifiers used to express a clinical idea.
Expression Constraint	A computable rule that can be used to define a bounded set of clinical meanings.
Machine Readable Concept Model (MRCM)	A representation of the rules that comprise the SNOMED CT Concept Model in a form that can be processed by computer software and applied to validate content.
Postcoordinated Expression	A representation of a clinical meaning using a combination of two or more concept identifiers.

Precoordinated Expression	A representation of a clinical meaning using a single concept identifier.
Range	The set of concepts that are allowed as the value of an attribute. ²
Reference Set	A SNOMED CT file structure consisting of a set of references to SNOMED CT components.
Substrate	The SNOMED CT content over which an expression constraint is evaluated or a query is executed.

-
- ¹ Please note that this definition differs from the OWL 2 `rdfs:domain` axiom, which asserts that "the subjects of such property statements must belong to the class extension of the indicated class description".
- ² Please note that this definition differs from the OWL 2 `rdfs:range` axiom, which asserts that "the values of this property must belong to the class extension of the class description or to data values in the specified data range."

2. Use Cases

Overview

The SNOMED CT Concept Model is a set of rules that govern the ways in which SNOMED CT concepts are permitted to be modelled. The Machine Readable Concept Model (MRCM) represents these concept model rules in a machine readable form. The SNOMED CT MRCM may be useful in a number of use cases, including:

- Development of precoordinated terminology content;
- Authoring and validation of SNOMED CT expressions, constraints and queries;
- Natural Language Processing;
- Terminology binding to information models, for purposes such as data capture and semantic interoperability.

In the following subsections, we describe each of these key use cases.

Precoordinated Terminology Development

Overview

One of the key uses of the SNOMED CT MRCM is to assist in the consistent development of precoordinated terminology content. This includes terminology content authoring, validation and testing. The authoring and validation of SNOMED CT content may be performed in the SNOMED CT International Edition or in a SNOMED CT Edition that incorporates one or more National or Local extensions. In the case of the International Edition, the SNOMED CT International concept model will be used. Other SNOMED CT Editions may be authored and validated using either the international concept model or an alternative concept model that has been customized to meet specific national or local requirements, while ensuring consistency and data integrity between editions is maintained.

Authoring

When precoordinated SNOMED CT concepts are authored, the MRCM can be used to suggest the possible attributes that may be used to define a concept, based on the hierarchy or subhierarchy it belongs to. The MRCM can also assist in limiting the number of times each attribute can be used in a concept definition, and restricting the possible value of these attributes to the valid range.

An example scenario, in which the MRCM is being used during concept authoring, is:

1. Author creates a concept, with fully specified name and synonyms;
2. Author assigns one or more supertypes for the concept;
3. The MRCM is used to determine the domains to which a concept belongs, based on its supertypes;
4. The MRCM is used to determine the appropriate attributes, ranges and cardinality for the given domain;
5. The author is allowed to assign an appropriate number of values to each of the attributes, from the relevant range, subject to the associated cardinality constraints.

Validation and Testing

In addition to its use during concept authoring, the MRCM can also assist in the validation of concept definitions, by enabling the testing of defining relationships against the rules in the concept model. The MRCM can also enable significant optimizations for batch terminology content validation, by minimizing the repetition of processing through the appropriate selection of relationships to be tested.

In a similar way, the MRCM can be used to enable effective testing of proposed changes to the Concept Model.

Expressions, Constraints and Queries

In a similar way, the SNOMED CT MRCM can be used to assist the authoring and validation of SNOMED CT postcoordinated expressions, SNOMED CT expression constraints, or SNOMED CT queries.

When authoring expressions, constraints or queries, the MRCM can be used to suggest possible attributes that may be applied to the selected focus concepts. Similarly to the authoring of precoordinated content, the MRCM can also restrict the possible value of each attribute refinement to the valid range.

The use of MRCM cardinality constraints differs between expressions, expression constraints and queries. When authoring postcoordinated expressions, an attribute cardinality constraint may be used to limit the number of times each attribute can be used in each concept definition. When authoring expression constraints and queries, however, the MRCM cardinality constraints serves to influence the cardinality constraints that are appropriate to apply to specific attribute refinements.

The SNOMED CT MRCM can also be used to validate expressions, expression constraints and queries to confirm that they conform to the expected concept model rules. In the case of close-to-user expressions, these rules may be less strict to support additional flexibility of expression (including allowing 'laterality' to be applied to a clinical finding that is defined using a lateralizable finding site).

As with precoordinated content, the authoring and validation of SNOMED CT expressions, expression constraints and queries can be performed using the international MRCM rules, or using the rules from a localized MRCM.

Natural Language Processing

Natural Language Processing (NLP) enables a computer program to analyze and extract meaning from human language. When processing clinical free text using a NLP tool, SNOMED CT's concepts, relationships and descriptions can be used to extract the clinical meaning that has been captured.

The SNOMED CT concept model can also be used to identify potential connections between words and possible postcoordination opportunities. For example, if a term such as 'open fracture' (which is found to be a [404684003 | Clinical finding](#)) occurs in close proximity to the term 'femur' (which is found to be an [91723000 | Anatomical structure](#)), then this may indicate that there is a 'finding site' relationship between the concepts. By capturing the concept model rules in a machine-processable way, the SNOMED CT MRCM can be used to assist a range of NLP-supported tasks, including:

- Encoding clinical free text using SNOMED CT expressions;
- Indexing and retrieving large repositories of clinical healthcare information and knowledge;
- Searching;
- Analyzing clinical phrases entered into a health record to suggest potential postcoordinated expressions that may match the intended clinical meaning;
- Analyzing search terms to determine the strength of the semantic relationship to matching records or documents.

For more information on using SNOMED CT in Natural Language Processing, please refer to [Data Analytics with SNOMED CT](#).

Terminology Binding to Information Models

When binding SNOMED CT to information models, it is important to ensure that the bindings are consistent (at least at a high level) with the SNOMED CT concept model. Terminology binding using the MRCM may be used to support a range of purposes, from data capture on the user interface through to data integration and semantic interoperability.

There are two main types of terminology binding:

- Value set bindings, which record the set of possible values that can be used to populate a coded data element or attribute;
- Model meaning bindings, which define the meaning of an information model artifact using terminology.

Value set bindings that correspond to a particular concept model attribute (e.g. 272741003 |Laterality|) can be designed to be consistent with the appropriate attribute range (e.g. < 182353008 |Side|) defined in the MRCM. Similarly, the MRCM can be used to suggest possible model meaning bindings for an information model, to suggest new data elements that could be added (at either design time or runtime) to represent relevant attribute refinements, and to test existing model meaning bindings for consistency with the concept model.

Expression templates (designed with the support of the MRCM) can also be used to define a canonical representation of meaning for an information model, where this meaning may be recorded either using a single precoordinated concept, or using multiple data elements. This can provide a useful mechanism to support consistent querying of data that has been integrated from multiple sources, and to support semantic interoperability in general.

3. Requirements

Overview

In this section, we present the key requirements of the SNOMED CT MRCM. These requirements are grouped into 'constraint requirements' and 'design requirements'.

Constraint Requirements

The constraint requirements for the SNOMED CT MRCM include:

Requirement C.1: *Attribute domains*

The MRCM must be able to specify the set of concepts to which a given attribute may be applied.

Requirement C.2: *Attribute ranges*

The MRCM must be able to specify the set of concepts which may be used as the value for a given attribute.

Requirement C.3: *Attribute cardinality*

The MRCM must be able to specify the minimum and maximum number of times that a given attribute may appear in a concept definition. Additionally, it must be able to specify the minimum and maximum number of times that a given attribute may appear in each relationship group in a concept definition.

Requirement C.4: *Grouping*

The MRCM must be able to specify whether an attribute may or may not belong to a relationship group.

Requirement C.5: *Rule strength*

The MRCM should indicate the strength with which each rule should be applied – for example, whether a rule is mandatory (resulting in an error), or optional (resulting in a warning).

Requirement C.6: *Rule scope*

There should be a clear specification of which concept model rules apply to a given SNOMED CT module.

Design Requirements

The design requirements for the SNOMED CT MRCM include:

Requirement D.1: *Machine Computable*

In order to facilitate easy adoption, the MRCM must represent the concept model rules in a form that is machine computable.

Requirement D.2: *Human readable*

The MRCM must be computationally transformable into a representation that is human readable, to support human review, validation, education and understanding of the rules. Additional text explaining the rules should be able to be added to further aid its understanding.

Requirement D.3: *Unambiguous*

The MRCM must provide an unambiguous representation of the SNOMED CT concept model rules.

Requirement D.4: *Support specified use cases*

The MRCM must be useful in supporting the use cases described in Chapter 2, including the authoring and validation of SNOMED CT concepts, expressions, constraints and queries, natural language processing (NLP) and terminology binding.

Requirement D.5: *Version history*

The SNOMED CT concept model rules must be able to be changed between releases to fix identified issues and enhance future releases (in conjunction with clear editorial guidelines). As such, the MRCM must be versioned to retain a history of changes, and to enable the concept model to evolve gracefully over time.

Requirement D.6: *Extensible*

The international MRCM rules defined by the IHTSDO must be able to be extended and adapted by organizations developing SNOMED CT extensions, to support the concept model requirements of their extension content. This may include the addition of new attributes, the addition of new rules, and the customization of existing rules. Principles need to be defined as to how MRCM rules may be extended and adapted, to ensure consistency and data integrity between SNOMED CT editions.

Requirement D.7: *Consistency with existing SNOMED CT formats and languages*

The design of the MRCM should be consistent with existing SNOMED CT formats and languages, including the SNOMED CT Release Format 2 (RF2) and the SNOMED CT Expression Constraint Language. The goals of appropriate use of existing formats and languages include:

- Leverage the work that has already been performed to support common requirements, such as versioning and intensional constraint definition,
- Make it easier for the SNOMED CT community to understand the design and correctly interpret the meaning of the MRCM rules,
- Facilitate the easier adoption of the MRCM rules by existing SNOMED CT implementers, and
- Allow common terminology services to be reused to support the implementation of the MRCM.

4. Logical Design

Overview

In this chapter, we describe the logical design of the SNOMED CT MRCM.

Each SNOMED CT Module may have a concept model that is captured using a MRCM. A MRCM contains a set of domains and a set of attributes, which may be applied to one or more domains. The MRCM specifies the cardinality and valid range of each attribute, and indicates whether or not the attribute should be grouped. The domain, range, cardinality and grouped indicator for each attribute is also combined into a single 'attribute rule', which is represented using a SNOMED CT Expression Constraint. For each domain, the set of valid attributes and their associated rules are compiled into two SNOMED CT 'domain templates' – for precoordinated concept authoring and postcoordinated expression authoring respectively. These domain templates may be further specialized to support customized authoring of specific subdomains.

The figure below illustrates the major components of the MRCM described above.

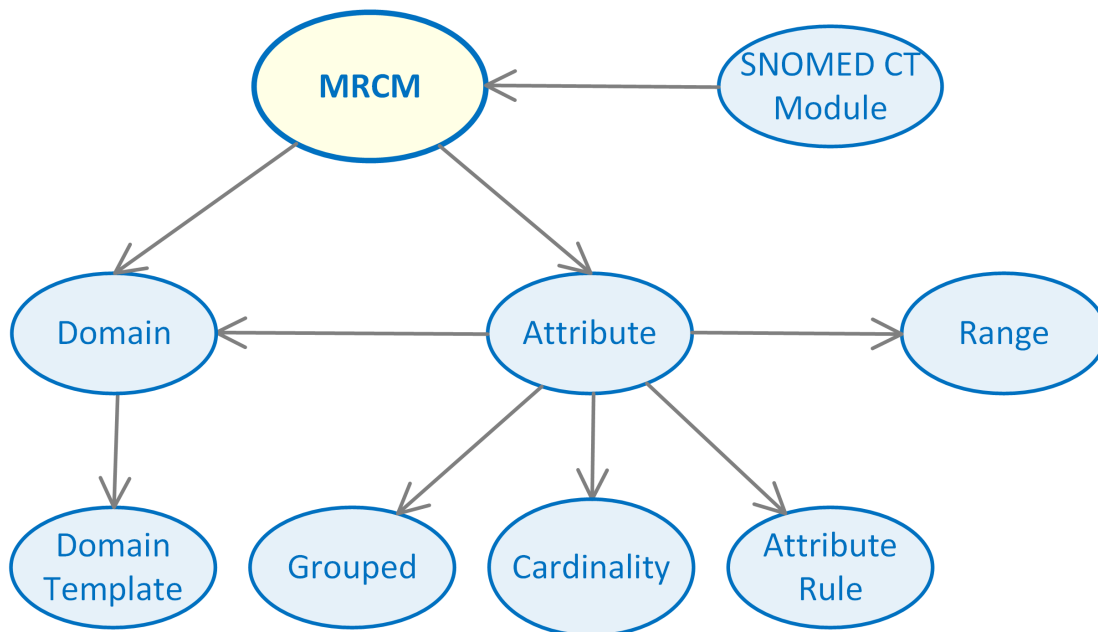


Figure 4-1: Abstract Model of the SNOMED CT MRCM

Details

The figure below illustrates the logical design of the SNOMED CT MRCM using a UML class diagram.

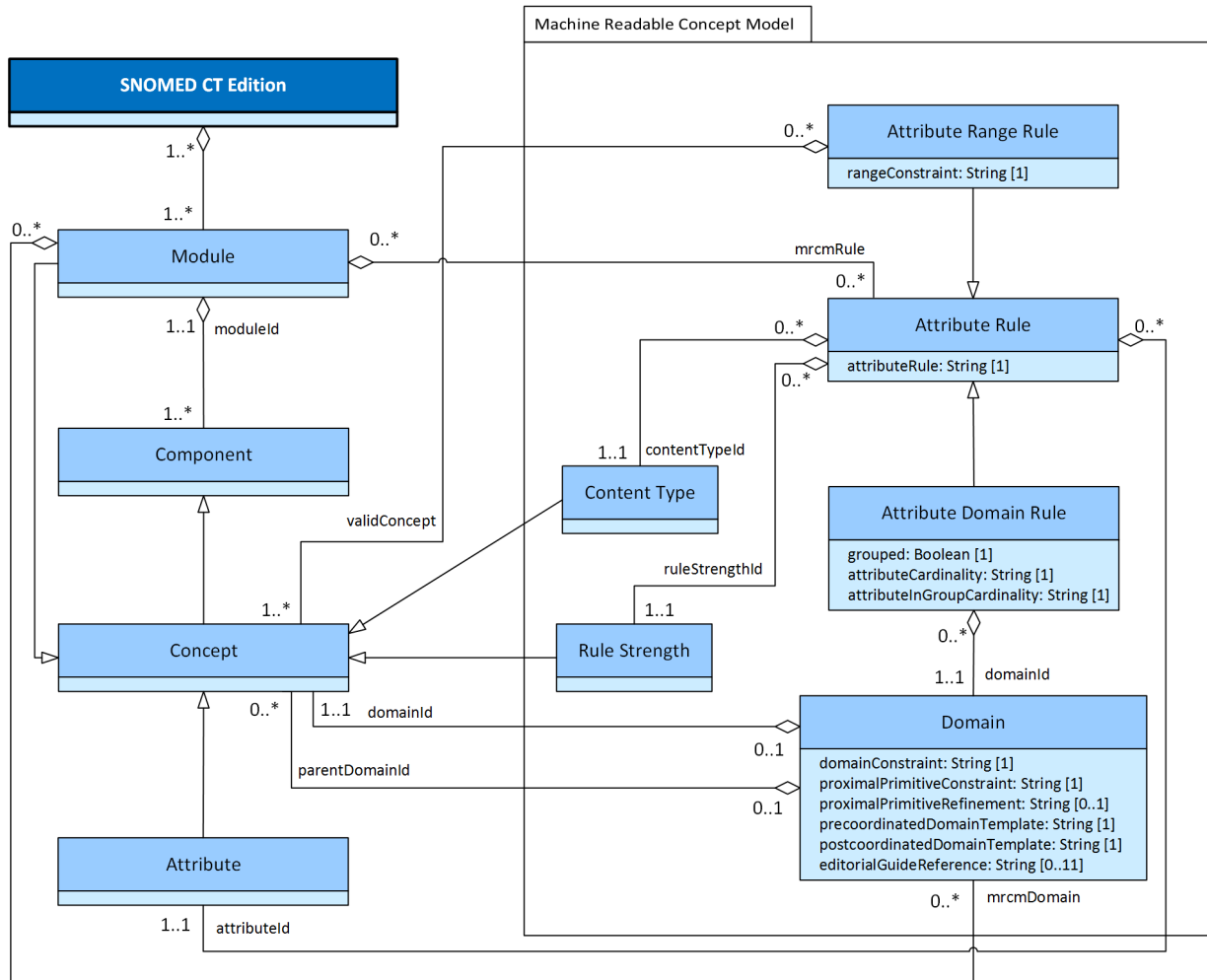


Figure 4-2: Logical Model of the SNOMED CT MRCM

This UML class diagram illustrates that a SNOMED CT Edition contains a set of modules, which may each be associated with a set of MRCM domains and attribute rules.

Each domain has exactly one domainConstraint represented using a SNOMED CT Expression Constraint (which specifies the valid concepts in the domain). A domain also has a proximalPrimitiveConstraint (which specifies the domain constraint used for proximal primitive modelling in this domain), a proximalPrimitiveRefinement (which specifies any mandatory refinements that must be applied when proximal primitive modelling in this domain), a precoordinatedDomainTemplate (which provides a general template of all possible attributes that may be applied to this domain when defining a precoordinated concept), and a postcoordinatedDomainTemplate (which provides a general template of all possible attributes that may be applied to this domain when defining a postcoordinated expression). A domain also includes a reference to where further human-readable information about the domain is captured within the Editorial Guide.

Each attribute rule is associated with a specific rule strength (e.g. 723597001 |Mandatory concept model rule|) and content type (e.g. 723596005 |All SNOMED CT content|). An Attribute Rule may either associate an attribute with the domains to which it may be applied (i.e. an Attribute Domain Rule), or it may associate an attribute with the range of valid concepts that may be used as its value (i.e. an Attribute Range Rule). Attribute Domain Rules also define whether or not each attribute is considered to be grouped (by a Description Logic reasoner) for the given domain, and the attribute cardinalities for that domain.

5. Distribution Format

Overview

The MRCM distribution format (as illustrated below) includes the following reference set types:

In this section, we will define and describe these reference set types. Further design considerations, such as versioning and localization, will be discussed in [6. Considerations](#).

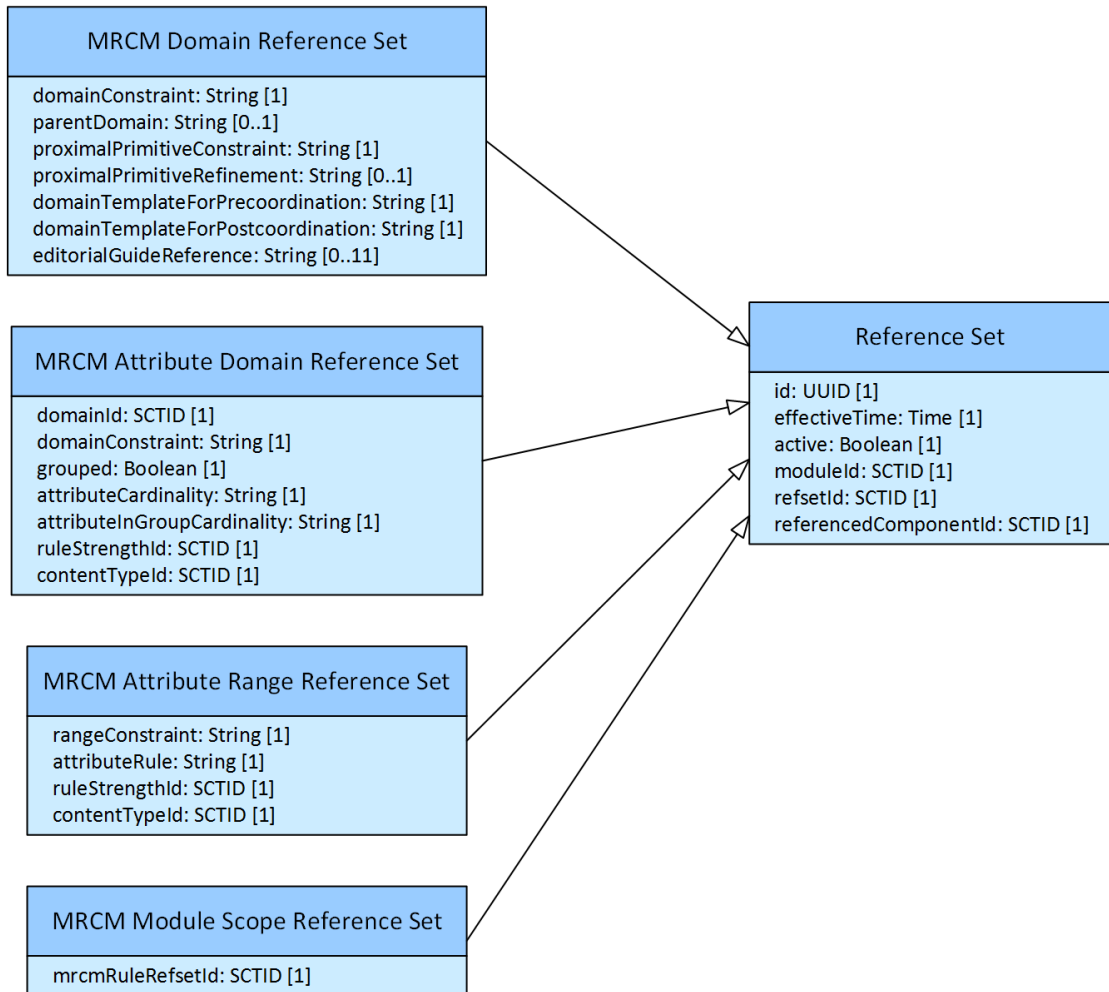


Figure 5-1: Overview of the MRCM distribution format

5.1 MRCM Domain Reference Set

Purpose

An 723589008 |MRCM domain reference set| enumerates the concept domains to which SNOMED CT attributes may be applied, and provides additional information to support these concept domains.

Each concept domain is uniquely identified by a SNOMED CT concept. When the scope of a domain covers the concepts in a particular hierarchy (or subhierarchy), the supertype concept of this hierarchy (or subhierarchy) is used to identify the domain. When a domain is defined based on membership in a reference set, the associated reference set concept is used to identify the domain. In some situations, a query may be required to define a complex domain. In these cases, the query's expansion reference set (referred to by the 'referencedComponent' of the relevant Query reference set) is used to identify the domain.

For each domain in the SNOMED CT concept model, the 723589008 |MRCM domain reference set| will contain exactly one member. This reference set member will include an Expression Constraint that defines the concepts in the domain, the identifier of the immediate parent domain (or domains), the domain constraint defined in terms of its proximal primitive concepts and associated mandatory refinements, a generic Domain Expression Template for both precoordinated and postcoordinated content, and a reference to the associated guidance that provides additional human-readable text describing this domain. Please note that it is anticipated that the generic Domain Expression Templates will be specialized further for authoring of specific subdomains using specializations stored in a Template Library.

Data Structure

An 723589008 |MRCM domain reference set| is structured as shown in the following table.

Field	Data type	Purpose	Mutable	Part of Primary Key
id	UUID	A 128 bit unsigned Integer , uniquely identifying this reference set member . Different versions of a reference set member share the same id but have different effectiveTime . This allows a reference set member to be modified or made inactive (i.e. removed from the active set) at a specified time.	NO	YES (Full / Snapshot)
effectiveTime	Time	The inclusive date or time at which this version of the identified reference set member became the current version. The current version of this reference set member at time <i>T</i> is the version with the most recent effectiveTime prior to or equal to time <i>T</i> .	YES	YES (Full) Optional (Snapshot)
active	Boolean	The state of the identified reference set member as at the specified effectiveTime . If active = 1 (true) the reference set member is part of the current version of the set, if active = 0 (false) the reference set member is not part of the current version of the set.	YES	NO
moduleId	SCTID	Identifies the SNOMED CT module that contains this reference set member as at the specified effectiveTime . The value must be a subtype of 900000000000443000 Module (core metadata concept) within the metadata hierarchy .	YES	NO
refsetId	SCTID	Identifies the reference set to which this reference set member belongs. In this case, a subtype descendant of: 723589008 MRCM domain reference set	NO	NO
referencedComponentId	SCTID	A reference to the SNOMED CT component to be included in the reference set . A reference to the SNOMED CT concept that identifies the relevant concept domain.	NO	NO
domainConstraint	String	An expression constraint, which defines the set of concepts included in the given concept domain. This string can be parsed using the ABNF syntax defined for the Expression Constraint Language .	YES	NO
parentDomain	String	An expression constraint, which represents the set of immediate parent domains. An immediate parent domain is a domain that is a proper superset of the given domain, and which is not a proper superset of any other parent domain.	YES	NO

proximalPrimitiveConstraint	String	<p>The domain constraint, as it would be represented for proximal primitive modelling. If the domain concept is sufficiently defined, then its proximal primitive parent will be used instead, while if the domain concept is primitive, then the concept itself is used. Additional constraints on the proximal primitive parent are also included.</p> <p>The expansion of the given constraint must be further filtered to find those concepts with a definitionStatusId = 900000000000074008 Primitive .</p> <p>This string can be parsed using the ABNF syntax defined for the Expression Constraint Language .</p>	YES	NO
proximalPrimitiveRefinement	String	<p>The template representation of any additional refinements that are required to model in the given domain using proximal primitive modelling. These mandatory refinements reflect the defining relationships of the domain concept, when it is sufficiently defined.</p> <p>This string can be parsed using the 'refinement' rule in the ABNF syntax defined for the Expression Constraint Language .</p>	YES	NO
domainTemplateForPrecoordination	String	<p>A general template that may be used to author precoordinated content. This template incorporates all of the mandatory attribute domain and range rules for precoordinated SNOMED CT content.</p> <p>This string can be parsed using the Expression Template Language (currently under development).</p>	YES	NO
domainTemplateForPostcoordination	String	<p>A general template that may be used to author postcoordinated content. This template incorporates all of the mandatory attribute domain and range rules for postcoordinated SNOMED CT content.</p> <p>This string can be parsed using the Expression Template Language (currently under development).</p>	YES	NO
guideURL	URL	<p>A Uniform Resource Locator (URL) that references a web resource in which the given domain is described in further detail.</p> <p>This URL uses the following pattern: "http://snomed.org/dom <conceptId>"</p>	YES	NO

Metadata

The following metadata hierarchy supports this reference set:

- 900000000000454005 |[Foundation metadata concept](#)|
 - 900000000000455006 |[Reference set](#)|
 - 723564002 |[MRCM reference set](#)|
 - 723589008 |[MRCM domain reference set](#)|
 - 723560006 |[MRCM domain international reference set](#)|
- 900000000000457003 |[Reference set attribute](#)|
 - 723565001 |[Domain constraint](#)|
 - 723570008 |[Guide URL](#)|
 - 723566000 |[Parent domain](#)|
 - 723567009 |[Proximal primitive constraint](#)|
 - 723568004 |[Proximal primitive refinement](#)|
 - 723569007 |[Template](#)|
 - 723599003 |[Domain template](#)|
 - 723600000 |[Domain template for precoordination](#)|
 - 723601001 |[Domain template for postcoordination](#)|

Reference Set Descriptor and Example Data

i Notes on the tables used to show descriptors and examples

The reference set example tables on this page have been revised as follows to aid clarity and understanding:

- The first four columns which are present in all release files are not shown. The omitted columns ([id](#), [effectiveTime](#), [active](#), [moduleId](#)) are used in the same way in all referenced sets to support identification, versioning and packaging. They do not directly affect the specific features of a particular reference set or reference set type.
- Reference set columns that contain SNOMED CT identifiers are expanded to show details of the concept or description referenced by that identifier. In some cases, the term is shown in the same column using the expression syntax, in other cases an additional column with a name suffix '_term' has been added. In the standard reference set files only the identifier is present in the column and there is no added column for the term. When using reference sets, the term and other details of the component are looked up from the relevant component release files.

Descriptor Template

The table below shows the reference set descriptor for a reference set that follows the [723589008 |MRCM domain reference set|](#) pattern.

refsetId	referencedComponentId	attributeDescription	attributeType	attribute Order
90000000000456007 Reference set descriptor 	723589008 MRCM domain reference set 	449608002 Referenced component 	90000000000461009 Concept type component 	0
90000000000456007 Reference set descriptor 	723589008 MRCM domain reference set 	723565001 Domain constraint 	707000009 SNOMED CT parsable string 	1
90000000000456007 Reference set descriptor 	723589008 MRCM domain reference set 	723566000 Parent domain 	707000009 SNOMED CT parsable string 	2
90000000000456007 Reference set descriptor 	723589008 MRCM domain reference set 	723567009 Proximal primitive constraint 	707000009 SNOMED CT parsable string 	3
90000000000456007 Reference set descriptor 	723589008 MRCM domain reference set 	723568004 Proximal primitive refinement 	707000009 SNOMED CT parsable string 	4
90000000000456007 Reference set descriptor 	723589008 MRCM domain reference set 	723600000 Domain template for precoordination 	707000009 SNOMED CT parsable string 	5
90000000000456007 Reference set descriptor 	723589008 MRCM domain reference set 	723601001 Domain template for postcoordination 	707000009 SNOMED CT parsable string 	6
90000000000456007 Reference set descriptor 	723589008 MRCM domain reference set 	723570008 Guide URL 	707000009 SNOMED CT parsable string 	7

Example Data

The table below shows some example rows from a reference set that uses the format of the [723589008 |MRCM domain reference set|](#).

Please note that the generic domain templates defined for the SNOMED CT International Edition are designed to support a proximal primitive parent authoring approach. However, domain templates included in an extension's 723589008 |MRCM domain reference set| may be designed to support a proximal parent authoring approach if required.

refsetId	referenced Component Id	domain Constraint	parent Domain	proximal Primitive Constraint	proximal Primitive Refinement	domainTemplateForPrecoordination	domainTemplateForPostcoordination	guideURL
72356006 MRCM domain international reference set	71388002 Procedure (procedure)	<< 71388002 Procedure (procedure)		<< 71388002 Procedure (procedure)		[[+id(<< 71388002 Procedure (procedure))]]: [[0..*]] { [[0..*]] 260507000 Access = [[+id(<< 309795001 Surgical access values (qualifier value))]], [[0..*]] 363699004 Direct device = [[+id(<< 49062001 Device (physical object))]], [[0..*]] 363700003 Direct morphology = [[+id(<< 49755003 Morphologically abnormal structure (morphologic abnormality))]], [[0..*]] 363701004 Direct substance = [[+id(<< 105590001 Substance (substance) OR << 373873005 Pharmaceutical / biologic product (product))]], [[0..*]] 363702006 Has focus = [[+id(<< 404684003 Clinical finding (finding) OR << 71388002 Procedure (procedure))]], [[0..*]] 363703001 Has intent = [[+id(<< 363675004 Intents (nature of procedure values) (qualifier value))]], [[0..*]] 363710007 Indirect device = [[+id(<< 49062001 Device (physical object))]], [[0..*]] 363709002 Indirect morphology = [[+id(<< 49755003 Morphologically abnormal structure (morphologic abnormality))]], [[0..*]] 260686004 Method = [[+id(<< 129264002 Action (qualifier value))]], [[0..*]] 260870009 Priority = [[+id(<< 272125009 Priorities (qualifier value))]], [[0..*]] 405815000 Procedure device = [[+id(<< 49062001 Device (physical object))]], [[0..*]] 405816004 Procedure morphology = [[+id(<< 49755003 Morphologically abnormal structure (morphologic abnormality))]], [[0..*]] 363704007 Procedure site = [[+id(<< 442083009 Anatomical or acquired body structure (body structure))]], [[0..*]] 405813007 Procedure site - Direct = [[+id(<< 442083009 Anatomical or acquired body structure (body structure))]], [[0..*]] 405814001 Procedure site - Indirect = [[+id(<< 442083009 Anatomical or acquired body structure (body structure))]], [[0..*]] 370131001 Recipient category = [[+id(<< 125676002 Person	[[+scg(<< 71388002 Procedure (procedure))]]: [[0..*]] { [[0..*]] 260507000 Access = [[+scg(<< 309795001 Surgical access values (qualifier value))]], [[0..*]] 363699004 Direct device = [[+scg(<< 49062001 Device (physical object))]], [[0..*]] 363700003 Direct morphology = [[+scg(<< 49755003 Morphologically abnormal structure (morphologic abnormality))]], [[0..*]] 363701004 Direct substance = [[+scg(<< 105590001 Substance (substance) OR << 373873005 Pharmaceutical / biologic product (product))]], [[0..*]] 363702006 Has focus = [[+scg(<< 404684003 Clinical finding (finding) OR << 71388002 Procedure (procedure))]], [[0..*]] 363703001 Has intent = [[+scg(<< 363675004 Intents (nature of procedure values) (qualifier value))]], [[0..*]] 363710007 Indirect device = [[+scg(<< 49062001 Device (physical object))]], [[0..*]] 363709002 Indirect morphology = [[+scg(<< 49755003 Morphologically abnormal structure (morphologic abnormality))]], [[0..*]] 260686004 Method = [[+scg(<< 129264002 Action (qualifier value))]], [[0..*]] 260870009 Priority = [[+scg(<< 272125009 Priorities (qualifier value))]], [[0..*]] 405815000 Procedure device = [[+scg(<< 49062001 Device (physical object))]], [[0..*]] 405816004 Procedure morphology = [[+scg(<< 49755003 Morphologically abnormal structure (morphologic abnormality))]], [[0..*]] 363704007 Procedure site = [[+scg(<< 442083009 Anatomical or acquired body structure (body structure))]], [[0..*]] 405813007 Procedure site - Direct = [[+scg(<< 442083009 Anatomical or acquired body structure (body structure))]], [[0..*]] 405814001 Procedure site - Indirect = [[+scg(<< 442083009 Anatomical or acquired body structure (body structure))]], [[0..*]] 370131001 Recipient category = [[+scg(<< 125676002	http://snomed.org/dom71388002

refsetId	referenced Component Id	domain Constraint	parent Domain	proximal Primitive Constraint	proximal Primitive Refinement	domainTemplateForPrecoordination	domainTemplateForPostcoordination	guideURL
						(person) OR << 35359004 Family (social concept) OR << 133928008 Community (social concept) OR << 105455006 Donor for medical or surgical procedure (person) OR << 389109008 Group (social concept)]], [[0..*]] 246513007 Revision status = [[+id(<< 261424001 Primary operation (qualifier value) OR << 255231005 Revision - value (qualifier value) OR << 257958009 Part of multistage procedure (qualifier value)]], [[0..*]] 425391005 Using access device = [[+id(<< 49062001 Device (physical object)]], [[0..*]] 424226004 Using device = [[+id(<< 49062001 Device (physical object)]], [[0..*]] 424244007 Using energy = [[+id(<< 78621006 Physical force (physical force)]], [[0..*]] 424361007 Using substance = [[+id(<< 105590001 Substance (substance)])] }	Person (person) OR << 35359004 Family (social concept) OR << 133928008 Community (social concept) OR << 105455006 Donor for medical or surgical procedure (person) OR << 389109008 Group (social concept)]], [[0..*]] 246513007 Revision status = [[+scg(<< 261424001 Primary operation (qualifier value) OR << 255231005 Revision - value (qualifier value) OR << 257958009 Part of multistage procedure (qualifier value)]], [[0..*]] 425391005 Using access device = [[+scg(<< 49062001 Device (physical object)]], [[0..*]] 424226004 Using device = [[+scg(<< 49062001 Device (physical object)]], [[0..*]] 424244007 Using energy = [[+scg(<< 78621006 Physical force (physical force)]], [[0..*]] 424361007 Using substance = [[+scg(<< 105590001 Substance (substance)])] }	
723560006 MRCM domain international reference set	386053000 Evaluation procedure (procedure)	<< 386053000 Evaluation procedure (procedure)	71388002 Procedure (procedure)	<< 71388002 Procedure (procedure)	[[1..*]] 260686004 Method = [+(<< 129265001 Evaluation - action)]]	[[+id(<< 71388002 Procedure (procedure))]]: [[0..*]] { [[1..*]] 260686004 Method = [+id(<< 129265001 Evaluation - action)]], [[0..*]] 246093002 Component = [[+id(<< 123037004 Body structure OR << 410607006 Organism OR << 105590001 Substance OR << 123038009 Specimen OR << 260787004 Physical object OR << 373873005 Pharmaceutical / biologic product OR << 419891008 Record artifact OR << 363787002 Observable entity)]], [[0..*]] 116686009 Has specimen = [[+id(<< 123038009 Specimen (specimen))]], [[0..*]] 370129005 Measurement method = [[+id(<< 127789004 Laboratory procedure categorized by method (procedure))]], [[0..*]] 370130000 Property = [[+id(<< 118598001 Property of measurement (qualifier value))]], [[0..*]] 370132008 Scale type = [[+id(<< 30766002 Quantitative OR << 26716007 Qualitative OR << 117363000 Ordinal value OR << 117365007 Ordinal or quantitative value	[[+scg(<< 71388002 Procedure (procedure))]]: [[0..*]] { [[1..*]] 260686004 Method = [+scg(<< 129265001 Evaluation - action)]], [[0..*]] 246093002 Component = [[+scg(<< 123037004 Body structure OR << 410607006 Organism OR << 105590001 Substance OR << 123038009 Specimen OR << 260787004 Physical object OR << 373873005 Pharmaceutical / biologic product OR << 419891008 Record artifact OR << 363787002 Observable entity)]], [[0..*]] 116686009 Has specimen = [[+scg(<< 123038009 Specimen (specimen))]], [[0..*]] 370129005 Measurement method = [[+scg(<< 127789004 Laboratory procedure categorized by method (procedure))]], [[0..*]] 370130000 Property = [[+scg(<< 118598001 Property of measurement (qualifier value))]], [[0..*]] 370132008 Scale type = [[+scg(<< 30766002 Quantitative OR << 26716007 Qualitative OR << 117363000 Ordinal value OR << 117365007 Ordinal or quantitative value	http://snomed.org/dom386053000

refsetId	referenced Component Id	domain Constraint	parent Domain	proximal Primitive Constraint	proximal Primitive Refinement	domainTemplateForPrecoordination	domainTemplateForPostcoordination	guideURL
					<p> OR << 117362005 Nominal value OR << 117364006 Narrative value OR << 117444000 Text value)), [[0..*]] 370134009 Time aspect = [[+id(<< 7389001 Time frame (qualifier value))]], [[0..*]] 260507000 Access = [[+id(<< 309795001 Surgical access values (qualifier value))]], [[0..*]] 363699004 Direct device = [[+id(<< 49062001 Device (physical object))), [[0..*]] 363700003 Direct morphology = [[+id(<< 49755003 Morphologically abnormal structure (morphologic abnormality))]], [[0..*]] 363701004 Direct substance = [[+id(<< 105590001 Substance (substance) OR << 373873005 Pharmaceutical / biologic product (product))]], [[0..*]] 363702006 Has focus = [[+id(<< 404684003 Clinical finding (finding) OR << 71388002 Procedure (procedure))]], [[0..*]] 363703001 Has intent = [[+id(<< 363675004 Intents (nature of procedure values) (qualifier value))), [[0..*]] 363710007 Indirect device = [[+id(<< 49062001 Device (physical object))]], [[0..*]] 363709002 Indirect morphology = [[+id(<< 49755003 Morphologically abnormal structure (morphologic abnormality))]], [[0..*]] 260686004 Method = [[+id(<< 129264002 Action (qualifier value))), [[0..*]] 260870009 Priority = [[+id(<< 272125009 Priorities (qualifier value))]], [[0..*]] 405815000 Procedure device = [[+id(<< 49062001 Device (physical object))]], [[0..*]] 405816004 Procedure morphology = [[+id(<< 49755003 Morphologically abnormal structure (morphologic abnormality))]], [[0..*]] 363704007 Procedure site = [[+id(<< 442083009 Anatomical or acquired body structure (body structure))]], [[0..*]] 405813007 Procedure site - Direct = [[+id(<< 442083009 Anatomical or acquired body structure (body structure))]], [[0..*]] 405814001 Procedure site - Indirect = [[+id(<< 442083009 Anatomical or acquired body structure (body structure) </p>	<p> OR << 117362005 Nominal value OR << 117364006 Narrative value OR << 117444000 Text value)), [[0..*]] 370134009 Time aspect = [[+scg(<< 7389001 Time frame (qualifier value))]], [[0..*]] 260507000 Access = [[+scg(<< 309795001 Surgical access values (qualifier value))), [[0..*]] 363699004 Direct device = [[+scg(<< 49062001 Device (physical object))]], [[0..*]] 363700003 Direct morphology = [[+scg(<< 49755003 Morphologically abnormal structure (morphologic abnormality))]], [[0..*]] 363701004 Direct substance = [[+scg(<< 105590001 Substance (substance) OR << 373873005 Pharmaceutical / biologic product (product))]], [[0..*]] 363702006 Has focus = [[+scg(<< 404684003 Clinical finding (finding) OR << 71388002 Procedure (procedure))]], [[0..*]] 363703001 Has intent = [[+scg(<< 363675004 Intents (nature of procedure values) (qualifier value))]], [[0..*]] 363710007 Indirect device = [[+scg(<< 49062001 Device (physical object))), [[0..*]] 363709002 Indirect morphology = [[+scg(<< 49755003 Morphologically abnormal structure (morphologic abnormality))]], [[0..*]] 260686004 Method = [[+scg(<< 129264002 Action (qualifier value))), [[0..*]] 260870009 Priority = [[+scg(<< 272125009 Priorities (qualifier value))]], [[0..*]] 405815000 Procedure device = [[+scg(<< 49062001 Device (physical object))]], [[0..*]] 405816004 Procedure morphology = [[+scg(<< 49755003 Morphologically abnormal structure (morphologic abnormality))]], [[0..*]] 363704007 Procedure site = [[+scg(<< 442083009 Anatomical or acquired body structure (body structure))]], [[0..*]] 405813007 Procedure site - Direct = [[+scg(<< 442083009 Anatomical or acquired body structure (body structure))]], [[0..*]] 405814001 Procedure site - Indirect = [[+scg(<< 442083009 Anatomical or</p>		

refsetId	referenced Component Id	domain Constraint	parent Domain	proximal Primitive Constraint	proximal Primitive Refinement	domainTemplateForPrecoordination	domainTemplateForPostcoordination	guideURL
						<p>)), [[0..*]] 370131001 Recipient category = [[+id(<< 125676002 Person (person) OR << 35359004 Family (social concept) OR << 133928008 Community (social concept) OR << 105455006 Donor for medical or surgical procedure (person) OR << 389109008 Group (social concept)]], [[0..*]] 246513007 Revision status = [[+id(<< 261424001 Primary operation (qualifier value) OR << 255231005 Revision - value (qualifier value) OR << 257958009 Part of multistage procedure (qualifier value)]], [[0..*]] 425391005 Using access device = [[+id(<< 49062001 Device (physical object)]], [[0..*]] 424226004 Using device = [[+id(<< 49062001 Device (physical object)]], [[0..*]] 424244007 Using energy = [[+id(<< 78621006 Physical force (physical force)]], [[0..*]] 424361007 Using substance = [[+id(<< 105590001 Substance (substance))]] } </p>	<p> acquired body structure (body structure)]], [[0..*]] 370131001 Recipient category = [[+scg(<< 125676002 Person (person) OR << 35359004 Family (social concept) OR << 133928008 Community (social concept) OR << 105455006 Donor for medical or surgical procedure (person) OR << 389109008 Group (social concept)]], [[0..*]] 246513007 Revision status = [[+scg(<< 261424001 Primary operation (qualifier value) OR << 255231005 Revision - value (qualifier value) OR << 257958009 Part of multistage procedure (qualifier value)]], [[0..*]] 425391005 Using access device = [[+scg(<< 49062001 Device (physical object)]], [[0..*]] 424226004 Using device = [[+scg(<< 49062001 Device (physical object)]], [[0..*]] 424244007 Using energy = [[+scg(<< 78621006 Physical force (physical force)]], [[0..*]] 424361007 Using substance = [[+scg(<< 105590001 Substance (substance))]] } </p>	

5.2 MRCM Attribute Domain Reference Set

Purpose

An 723604009 |MRCM attribute domain reference set| allows attributes to be associated with the domains in which they may be applied. It also allows grouping and cardinality constraints to be specified for each attribute and domain combination. For each attribute-domain rule, the strength of the rule (e.g. 723597001 |Mandatory concept model rule| or 723598006 |Optional concept model rule|) and the content type over which this rule applies (e.g. 723596005 |All SNOMED CT content|, 723594008 |All precoordinated SNOMED CT content|) is also specified.

Each attribute is identified by its concept id, while each domain is identified by the same concept id used in the referencedComponentId of the 723589008 |MRCM domain reference set|.

Data Structure


An 723604009 |MRCM attribute domain reference set| is structured as shown in the following table.

Field	Data type	Purpose	Mutable	Part of Primary Key
id	UUID	A 128 bit unsigned Integer, uniquely identifying this reference set member. Different versions of a reference set member share the same id but have different effectiveTime. This allows a reference set member to be modified or made inactive (i.e. removed from the active set) at a specified time.	NO	YES (Full / Snapshot)
effectiveTime	Time	The inclusive date or time at which this version of the identified reference set member became the current version. The current version of this reference set member at time T is the version with the most recent effectiveTime prior to or equal to time T.	YES	YES (Full) Optional (Snapshot)
active	Boolean	The state of the identified reference set member as at the specified effectiveTime. If active = 1 (true) the reference set member is part of the current version of the set, if active = 0 (false) the reference set member is not part of the current version of the set.	YES	NO
moduleId	SCTID	Identifies the SNOMED CT module that contains this reference set member as at the specified effectiveTime. The value must be a subtype of 900000000000443000 Module (core metadata concept) within the metadata hierarchy.	YES	NO
refsetId	SCTID	Identifies the reference set to which this reference set member belongs. In this case, a subtype descendant of:	NO	NO
referencedComponentId	SCTID	A reference to the SNOMED CT component to be included in the reference set. A reference to the SNOMED CT attribute concept to which the attribute-domain rule defined by this member applies.	NO	NO
domainId	SCTID	A reference to the SNOMED CT concept that identifies the relevant concept domain.	NO	NO

grouped	Boolean	<p>Whether or not the given attribute (identified by referencedComponentId) is treated by a Description Logic reasoner as belonging to a relationship group, when applied to a concept in the given domain.</p> <p>If grouped = 1 (true) then the given attribute (identified by referencedComponentId) is treated by a Description Logic reasoner as belonging to a relationship group.</p> <p>If grouped = 0 (false) then the given attribute (identified by referencedComponentId) is treated by a Description Logic reasoner as not belonging to a relationship group.</p>	YES	NO
attributeCardinality	string	<p>The number of times the given attribute can be assigned a distinct (non-redundant) value within the definition of each concept or expression.</p> <p>This string can be parsed using the following ABNF rule (together with the subrules defined in the Expression Constraint Language):</p> <p><i>attributeCardinality = minimum to maximum</i></p>	YES	NO
attributeInGroup Cardinality	string	<p>The number of times the given attribute can be assigned a distinct (non-redundant) value within a single relationship group as part of the definition of a concept or expression.</p> <p>This string can be parsed using the following ABNF rule (together with the subrules defined in the Expression Constraint Language):</p> <p><i>attributeCardinality = minimum to maximum</i></p>	YES	NO
ruleStrengthId	SCTID	A subtype of 723573005 Concept model rule strength which specifies whether the given rule is mandatory (resulting in an error) or optional (resulting in a warning).	YES	NO
contentTypeId	SCTID	A subtype of 723574004 Content type which indicates the type of SNOMED CT content over which this rule applies. In many cases, this will be set to 723596005 All SNOMED CT content .	YES	NO

Metadata

The following metadata hierarchy supports this reference set:

- [900000000000454005](#) | Foundation metadata concept |
 - [900000000000455006](#) | Reference set |
 - [723564002](#) | MRCM reference set |
 - [723604009](#) | MRCM attribute domain reference set |
 - [723561005](#) | MRCM attribute domain international reference set |
- [900000000000457003](#) | Reference set attribute |
 - [723571007](#) | Cardinality |
 - [723602008](#) | Attribute cardinality |
 - [723603003](#) | Attribute in group cardinality |
 - [723574004](#) | Content type | 
 - [723593002](#) | All new precoordinated SNOMED CT content |
 - [723594008](#) | All precoordinated SNOMED CT content |
 - [723596005](#) | All SNOMED CT content |
 - [723595009](#) | All postcoordinated SNOMED CT content |
 - [723596005](#) | All SNOMED CT content |
- [609431004](#) | Domain |
- [723572000](#) | Grouped |
- [723573005](#) | Concept model rule strength |
 - [723597001](#) | Mandatory concept model rule |
 - [723598006](#) | Optional concept model rule |

i Please note that the 723574004 |Content type| hierarchy is designed using 'universal restriction' logic. The hierarchy may therefore appear to be 'upside down'. However, it was designed in this way because if an MRCM rule applies to 723596005 |All SNOMED CT content| then it also applies to the Content Types that are a supertype of this - including 723594008 |All precoordinated SNOMED CT content| and 723595009 |All postcoordinated SNOMED CT content|.

Reference Set Descriptor and Example Data

i Notes on the tables used to show descriptors and examples

The reference set example tables on this page have been revised as follows to aid clarity and understanding:

- The first four columns which are present in all release files are not shown. The omitted columns ([id](#), [effectiveTime](#), [active](#), [moduleId](#)) are used in the same way in all referenced sets to support identification, versioning and packaging. They do not directly affect the specific features of a particular reference set or reference set type.
- Reference set columns that contain SNOMED CT identifiers are expanded to show details of the concept or description referenced by that identifier. In some cases, the term is shown in the same column using the expression syntax, in other cases an additional column with a name suffix '_term' has been added. In the standard reference set files only the identifier is present in the column and there is no added column for the term. When using reference sets, the term and other details of the component are looked up from the relevant component release files.

Descriptor Template

The table below shows the reference set descriptor for a reference set that follows the 723604009 |MRCM attribute domain reference set| pattern.

refsetId	referencedComponentId	attributeDescription	attributeType	attribute Order
900000000000456007 Reference set descriptor	723604009 MRCM attribute domain reference set	449608002 Referenced component	900000000000461009 Concept type component	0
900000000000456007 Reference set descriptor	723604009 MRCM attribute domain reference set	609431004 Domain	900000000000461009 Concept type component	1
900000000000456007 Reference set descriptor	723604009 MRCM attribute domain reference set	723572000 Grouped	900000000000478000 Unsigned integer	2
900000000000456007 Reference set descriptor	723604009 MRCM attribute domain reference set	723602008 Attribute Cardinality	707000009 SNOMED CT parsable string	3
900000000000456007 Reference set descriptor	723604009 MRCM attribute domain reference set	723603003 Attribute In Group Cardinality	707000009 SNOMED CT parsable string	4
900000000000456007 Reference set descriptor	723604009 MRCM attribute domain reference set	723573005 Concept model rule Strength	900000000000461009 Concept type component	5
900000000000456007 Reference set descriptor	723604009 MRCM attribute domain reference set	723574004 Content type	900000000000461009 Concept type component	6

Example Data

The table below shows some example rows from a reference set that follows the format of the [723604009 |MRCM attribute domain reference set|](#).

refsetId	referencedComponent Id	domainId	grouped	attribute Cardinality	attribute InGroup Cardinality	ruleStrengthId	contentTypeId
723561005 MRCM attribute domain international reference set 	255234002 After 	404684003 Clinical finding (finding) 	1	0..*	0..*	723597001 Mandatory concept model rule 	723596005 All SNOMED CT content
723561005 MRCM attribute domain international reference set 	255234002 After 	272379006 Event (event) 	1	0..*	0..*	723597001 Mandatory concept model rule 	723596005 All SNOMED CT content
723561005 MRCM attribute domain international reference set 	408729009 Finding context 	413350009 Finding with explicit context (situation) 	1	0..*	0..1	723597001 Mandatory concept model rule 	723596005 All SNOMED CT content
723561005 MRCM attribute domain international reference set 	272741003 Laterality 	91723000 Anatomical structure (body structure) 	0	0..1	0..0	723597001 Mandatory concept model rule 	723594008 All precoordinated SNOMED CT content

5.3 MRCM Attribute Range Reference Set

Purpose

An [723592007 |MRCM attribute range reference set|](#) allows attributes to be associated with a valid value range for a given SNOMED CT content type and rule strength. The range of each attribute is defined using an Expression Constraint. This expression constraint represents the set of concepts, expressions, or concrete values that may be used as the value of the given attribute. [i](#)

The [723592007 |MRCM attribute range reference set|](#) also provides a summary of the concept model rule associated with each attribute (including all valid domains and the given range) using an Expression Constraint representation. This attribute rule can be completely auto-generated by combining information from the [723604009 |MRCM attribute domain reference set|](#) and the [723592007 |MRCM attribute range reference set|](#).

Data Structure

An [723592007 |MRCM attribute range reference set|](#) is structured as shown in the following table.

Field	Data type	Purpose	Mutable	Part of Primary Key
id	UUID	A 128 bit unsigned Integer , uniquely identifying this reference set member . Different versions of a reference set member share the same id but have different effectiveTime . This allows a reference set member to be modified or made inactive (i.e. removed from the active set) at a specified time.	NO	YES (Full / Snapshot)
effectiveTime	Time	The inclusive date or time at which this version of the identified reference set member became the current version. The current version of this reference set member at time <i>T</i> is the version with the most recent effectiveTime prior to or equal to time <i>T</i> .	YES	YES (Full) Optional (Snapshot)
active	Boolean	The state of the identified reference set member as at the specified effectiveTime . If active = 1 (true) the reference set member is part of the current version of the set, if active = 0 (false) the reference set member is not part of the current version of the set.	YES	NO
moduleId	SCTID	Identifies the SNOMED CT module that contains this reference set member as at the specified effectiveTime . The value must be a subtype of 900000000000443000 Module (core metadata concept) within the metadata hierarchy .	YES	NO
refsetId	SCTID	Identifies the reference set to which this reference set member belongs. In this case, a subtype descendant of: 723592007 MRCM attribute range reference set 	NO	NO
referencedComponentId	SCTID	A reference to the SNOMED CT component to be included in the reference set . A reference to the SNOMED CT attribute concept to which the range defined by this member applies.	NO	NO

rangeConstraint	string	<p>An expression constraint, which defines the set of concepts that may be used as the value of the given attribute (identified by referencedComponentId).</p> <p>This string can be parsed using the ABNF syntax defined for the Expression Constraint Language.</p> <p>If ranges using concrete values are required, the Expression Constraint Language can be extended with the keyword "TYPE", by replacing the simpleExpressionConstraint rule with the following two rules:</p> <pre> simpleExpressionConstraint = [constraintOperator ws] eclFocusConcept / typeKeyword ws conceptReference typeKeyword = ("t"/"T") ("y"/"Y") ("p"/"P") ("e"/"E") </pre> <p>For example, the following range includes the set of all integers: TYPE 900000000000476001 Integer </p> <p>Any descendant of 900000000000459000 Attribute type may be used as the type of an attribute range.</p>	YES	NO
attributeRule	string	<p>An Expression Constraint that captures the domain, range and cardinality constraints for the given attribute, rule strength and content type.</p> <p>This string can be parsed using the ABNF syntax defined for the Expression Constraint Language.</p> <p>If ranges with concrete values are required, the Expression Constraint Language can be extended as described above (for rangeConstraint).</p>	YES	NO
ruleStrengthId	SCTID	<p>A subtype of 723573005 Concept model rule strength which specifies whether the given rule is mandatory (resulting in an error) or optional (resulting in a warning).</p>	YES	NO
contentTypeId	SCTID	<p>A subtype of 723574004 Content type which indicates the type of SNOMED CT content over which this rule applies.</p>	YES	NO

Metadata

The following metadata hierarchy supports this reference set:

- 900000000000454005 |Foundation metadata concept|
 - 900000000000455006 |Reference set|
 - 723564002 |MRCM reference set|
 - 723592007 |MRCM attribute range reference set|
 - 723562003 |MRCM attribute range international reference set|
- 900000000000457003 |Reference set attribute|
 - 723576002 |Attribute rule|
 - 723574004 |Content type| ²
 - 723593002 |All new precoordinated SNOMED CT content|
 - 723594008 |All precoordinated SNOMED CT content|
 - 723596005 |All SNOMED CT content|
 - 723595009 |All postcoordinated SNOMED CT content|
 - 723596005 |All SNOMED CT content|
 - 723575003 |Range constraint|
 - 723573005 |Concept model rule strength|
 - 723597001 |Mandatory concept model rule|
 - 723598006 |Optional concept model rule|

¹ If ranges including concrete values (such as integers or strings) are required, the Expression Constraint Language can be extended, as described for *rangeConstraint* in the Data Structure section on this page.

2 Please note that the 723574004 |Content type| hierarchy is designed using 'universal restriction' logic. The hierarchy may therefore appear to be 'upside down'. However, it was designed in this way because if an MRCM rule applies to 723596005 |All SNOMED CT content| then it also applies to the Content Types that are a supertype of this - including 723594008 |All precoordinated SNOMED CT content| and 723595009 |All postcoordinated SNOMED CT content|.

Reference Set Descriptor and Example Data

Notes on the tables used to show descriptors and examples

The reference set example tables on this page have been revised as follows to aid clarity and understanding:

- The first four columns which are present in all release files are not shown. The omitted columns ([id](#), [effectiveTime](#), [active](#), [moduleId](#)) are used in the same way in all referenced sets to support identification, versioning and packaging. They do not directly affect the specific features of a particular reference set or reference set type.
- Reference set columns that contain SNOMED CT identifiers are expanded to show details of the concept or description referenced by that identifier. In some cases, the term is shown in the same column using the expression syntax, in other cases an additional column with a name suffix '_term' has been added. In the standard reference set files only the identifier is present in the column and there is no added column for the term. When using reference sets, the term and other details of the component are looked up from the relevant component release files.

Descriptor Template

The table below shows the reference set descriptor for a reference set that follows the 723592007 |MRCM attribute range reference set| pattern.

refsetId	referencedComponentId	attributeDescription	attributeType	attribute Order
900000000000456007 Reference set descriptor	723592007 MRCM attribute range reference set	449608002 Referenced component	900000000000461009 Concept type component	0
900000000000456007 Reference set descriptor	723592007 MRCM attribute range reference set	723575003 Range constraint	707000009 SNOMED CT parsable string	1
900000000000456007 Reference set descriptor	723592007 MRCM attribute range reference set	723576002 Attribute rule	707000009 SNOMED CT parsable string	2
900000000000456007 Reference set descriptor	723592007 MRCM attribute range reference set	723573005 Concept model rule strength	900000000000461009 Concept type component	3
900000000000456007 Reference set descriptor	723592007 MRCM attribute range reference set	723574004 Content type	900000000000461009 Concept type component	4

Example Data

The table below shows some example rows from a reference set that follows the format of the [723592007 |MRCM attribute range reference set|](#).

refsetId	referencedComponentId	rangeConstraint	attributeRule	ruleStrengthId	contentTypeId
723562003 MRCM attribute range international reference set 	255234002 After 	<< 404684003 Clinical finding (finding) OR << 71388002 Procedure (procedure) 	(<< 404684003 Clinical finding (finding) OR << 272379006 Event (event));:[0..*]{[0..*] 255234002 After =(<< 404684003 Clinical finding (finding) OR << 71388002 Procedure (procedure))}	723597001 Mandatory concept model rule 	723596005 All SNOMED CT content
723562003 MRCM attribute range international reference set 	408729009 Finding context 	<< 410514004 Finding context value (qualifier value) 	<< 413350009 Finding with explicit context (situation) :[0..*]{[0..1] 408729009 Finding context =<< 410514004 Finding context value (qualifier value) }	723597001 Mandatory concept model rule 	723596005 All SNOMED CT content
723562003 MRCM attribute range international reference set 	272741003 Laterality 	<< 182353008 Side (qualifier value) 	<< 91723000 Anatomical structure (body structure) :[0..1] 272741003 Laterality =<< 182353008 Side (qualifier value) 	723597001 Mandatory concept model rule 	723596005 All SNOMED CT content

5.4 MRCM Module Scope Reference Set

Purpose

An 723563008 |MRCM module scope reference set| specifies the set of MRCM reference sets that should be applied to the content in each module. Within a SNOMED CT Edition, the MRCM rules applied to the included modules must be consistent, to ensure data integrity within an edition is maintained.

Data Structure

An 723563008 |MRCM module scope reference set| is structured as shown in the following table.

Field	Data type	Purpose	Mutable	Part of Primary Key
id	UUID	A 128 bit unsigned Integer , uniquely identifying this reference set member . Different versions of a reference set member share the same id but have different effectiveTime . This allows a reference set member to be modified or made inactive (i.e. removed from the active set) at a specified time.	NO	YES (Full / Snapshot)
effectiveTime	Time	The inclusive date or time at which this version of the identified reference set member became the current version. The current version of this reference set member at time <i>T</i> is the version with the most recent effectiveTime prior to or equal to time <i>T</i> .	YES	YES (Full) Optional (Snapshot)
active	Boolean	The state of the identified reference set member as at the specified effectiveTime . If active = 1 (true) the reference set member is part of the current version of the set, if active = 0 (false) the reference set member is not part of the current version of the set.	YES	NO
moduleId	SCTID	Identifies the SNOMED CT module that contains this reference set member as at the specified effectiveTime . The value must be a subtype of 900000000000443000 Module (core metadata concept) within the metadata hierarchy .	YES	NO
refsetId	SCTID	Identifies the reference set to which this reference set member belongs. In this case, set to 723563008 MRCM module scope reference set	NO	NO
referencedComponentId	SCTID	A reference to the SNOMED CT component to be included in the reference set . Identifies the SNOMED CT module to which the given concept model refset is applied. The value must be a subtype of 900000000000443000 Module within the metadata hierarchy .	NO	NO
mrcmRuleRefsetId	SCTID	A subtype of 723564002 MRCM reference set that defines the concept model rules that are applied to content in the module identified by referencedComponentId .	NO	NO

Metadata

The following metadata hierarchy supports this reference set:

- 900000000000454005 |[Foundation metadata concept](#)|
 - 900000000000455006 |[Reference set](#)|
 - 723564002 |[MRCM reference set](#)|
 - 723563008 |[MRCM module scope reference set](#)|

- 900000000000457003 |Reference set attribute|
 - 723577006 |MRCM rule reference set|

Reference Set Descriptor and Example Data

i Notes on the tables used to show descriptors and examples

The reference set example tables on this page have been revised as follows to aid clarity and understanding:

- The first four columns which are present in all release files are not shown. The omitted columns ([id](#), [effectiveTime](#), [active](#), [moduleId](#)) are used in the same way in all referenced sets to support identification, versioning and packaging. They do not directly affect the specific features of a particular reference set or reference set type.
- Reference set columns that contain SNOMED CT identifiers are expanded to show details of the concept or description referenced by that identifier. In some cases, the term is shown in the same column using the expression syntax, in other cases an additional column with a name suffix '_term' has been added. In the standard reference set files only the identifier is present in the column and there is no added column for the term. When using reference sets, the term and other details of the component are looked up from the relevant component release files.

Descriptor Template

The table below shows the reference set descriptor for the [723563008 |MRCM module scope reference set|](#) pattern.

refsetId	referencedComponentId	attributeDescription	attributeType	attribute Order
900000000000456007 Reference set descriptor 	723563008 MRCM module scope reference set 	449608002 Referenced component 	900000000000461009 Concept type component 	0
900000000000456007 Reference set descriptor 	723563008 MRCM module scope reference set 	723577006 MRCM rule reference set 	900000000000461009 Concept type component 	1

Example Data

The table below shows some example rows from the [723563008 |MRCM module scope reference set|](#).

refsetId	referencedComponentId	mrcmRuleRefsetId
723563008 MRCM module scope reference set 	900000000000207008 SNOMED CT core module (core metadata concept) 	723560006 MRCM domain international reference set
723563008 MRCM module scope reference set 	900000000000207008 SNOMED CT core module (core metadata concept) 	723561005 MRCM attribute domain international reference set
723563008 MRCM module scope reference set 	900000000000207008 SNOMED CT core module (core metadata concept) 	723562003 MRCM attribute range international reference set

6. Considerations

Overview

In this section, we discuss a range of topics that were considered in the design of the SNOMED CT MRCM, including:

- How the MRCM will be authored and quality checked,
- How the MRCM will be used to support the use cases described in [2. Use Cases](#),
- How the MRCM will be versioned when corrections or enhancements are made, and
- How the MRCM can be extended and adapted for use with SNOMED CT extensions.

Authoring and Quality Checks

The MRCM has been designed to include minimal redundancy, to make the authoring and maintenance of these rules less error-prone. For example, by using separate reference sets to represent the attribute domains and ranges, each range does not need to be repeated for each of the attribute's domains.

To support implementers who prefer to process string-based representations of the rules, three MRCM attributes have been provided that concatenate information from other fields (as per the table below). These attributes have been populated automatically to avoid inconsistencies between the structural and string-based representations of the rules. The MRCM attributes that may be generated from other attributes are:

MRCM Reference Set	Attribute	Populated From
MRCM domain reference set	domainTemplateForPrecoordination	MRCM domain reference set .domainConstraint,
MRCM domain reference set	domainTemplateForPostcoordination	MRCM attribute domain reference set .grouped, MRCM attribute domain reference set .attributeCardinality, MRCM attribute domain reference set .attributeInGroupCardinality,
MRCM attribute range reference set	attributeRule	MRCM attribute range reference set .rangeConstraint WHERE MRCM domain reference set .referencedComponentId = MRCM attribute domain reference set .domainId AND MRCM attribute domain reference set .referencedComponentId = MRCM attribute range reference set .referencedComponentId

In addition, the quality of the international SNOMED CT MRCM is checked using a range of mechanisms, including:

- Manual review, supported by the inclusion of human-readable terms for each concept identifier in the reference sets;
- Automated testing, including checks for the following:
 - All MRCM reference sets conform to the associated Descriptor Template,
 - All concept identifiers refer to active concepts in the relevant SNOMED CT international edition,
 - All concept identifiers refer to concepts from a value set appropriate for that field,
 - All parsable strings (e.g. expression constraints) are syntactically valid (based on the associated ABNF syntax) and refer to concepts that are active in the relevant SNOMED CT international edition,
- Feedback from direct use by SNOMED International staff in the SNOMED CT authoring tools, and
- Feedback from the SNOMED CT member, vendor and user communities.

Supporting Use Cases

Another important consideration in the design of the MRCM is how it can best be used to support the range of anticipated use cases. In this section, we describe the ways in which the MRCM design supports each of the use cases presented in [2. Use Cases](#).

Precoordinated Content Development

As described in 2. Use Cases, one of the key use cases for the SNOMED CT MRCM is to assist with the consistent authoring and validation of SNOMED CT concepts.

To support the authoring and validation of SNOMED CT precoordinated content, the following MRCM process can be used:

1. Identify the parents of the concept being authored;
 - *Please note* - Either proximal primitive parents or proximal parents may be selected, depending on the authoring approach used;
2. Determine which domains the parent concepts belong to using the |MRCM domain reference set|.
 - If the proximal parent modelling approach is used, the stated parents should be tested for membership in each domain using the *domainConstraint*;
 - If the proximal primitive parent modelling approach is used, the stated parents should be tested for membership in each domain using the *proximalPrimitiveConstraint* and all required refinements in the *proximalPrimitiveRefinement* should match at least one defining relationship stated on the concept being authored;
 - *Please note* - If any of the proximal parents belong to a given domain, then the authored concept belongs to that domain.
 - *Please note* - Irrespective of the modelling approach used, the concept being authored can be tested for membership in a domain by checking if its inferred parents (i.e. after classification) are valid against the associated *domainConstraint*.
3. Determine the set of valid attributes for the given domains using the |MRCM attribute domain reference set| and allow defining relationships to be added from this set;
4. For each attribute used to define the concept, ensure that the grouping and cardinality are valid according to the rules specified in |MRCM attribute domain reference set| for the given attribute and parent domain;
5. Determine the valid range for each defining attribute using the *rangeConstraint* in |MRCM attribute range reference set|.

Please note that when the above process is being applied to the authoring of new precoordinated content, then only rules with a *contentType* = << 723593002 |All new precoordinated SNOMED CT content| may be used. However, when the process is applied to the validation of (both new and existing) precoordinated content, only rules with a *contentType* = << 723594008 |All precoordinated SNOMED CT content| may be used. Rules with a *ruleStrength* of |Mandatory concept model rule| should be enforced when authoring and cause an error during validation, while rules with a *ruleStrength* of |Optional concept model rule| should be used as a recommendation for authoring and result in a warning during validation.

An alternative approach to authoring and validating precoordinated concepts is to use the *domainTemplateForPrecoordination* from the |MRCM domain reference set| to ensure compliance with the full set of attribute rules. The *domainTemplateForPrecoordination* can also be specialized into a concept authoring template that meets the needs of a subclass of concepts, while still conforming to the overall rules of the domain.

Other features provided by the MRCM that are helpful for precoordinated content development include:

- The |MRCM domain reference set| and the |MRCM attribute domain reference set| use domains defined in terms of a single top-level hierarchy. This enables concepts being authored to be tested for subsumption with each domain concept, using techniques that are relatively simple to implement (e.g. using a transitive closure table).
- The |MRCM attribute range reference set| includes a set of attribute rules that combine the domain, grouping, cardinality and range constraints into a single expression constraint, which can facilitate the efficient implementation of content validation.

- The `ruleStrengthId` attribute in the `|MRCM attribute domain reference set|` and the `|MRCM attribute range reference set|` allows both mandatory rules (resulting in errors) and optional rules (resulting in warnings) to be specified.
- The `contentTypeId` attribute in the `|MRCM attribute domain reference set|` and the `|MRCM attribute range reference set|` allows the scope of each rule to be restricted to a particular type of SNOMED CT content, including:
 - `|All SNOMED CT content|` – for rules which apply to both precoordinated and postcoordinated content;
 - `|All precoordinated SNOMED CT content|` – for rules which apply to all precoordinated content (but not to postcoordinated content);
 - `|All new precoordinated SNOMED CT content|` – for rules which apply to newly authored (i.e. stated) precoordinated content, which may not necessarily be valid for all existing content; and
 - `|All postcoordinated SNOMED CT content|` – for rules which apply to all postcoordinated content (but not to precoordinated content).

Expressions, Constraints and Queries

2. *Use Cases* describes using the SNOMED CT MRCM to assist the authoring and validation of SNOMED CT postcoordinated expressions, SNOMED CT expression constraints, and SNOMED CT queries. These languages allow one or more focus concepts to be defined, which when tested against a domain in the MRCM enables possible attribute refinements, cardinalities and valid ranges to be found.

To support the authoring and validation of SNOMED CT postcoordinated expressions the following MRCM process can be used:

1. Determine which domains the expression, constraint or query belongs to using the `|MRCM domain reference set|`
 - An expression belongs to a given domain if all focus concepts are either:
 - a. Valid when tested against the associated *domainConstraint*; or
 - b. Valid when tested against the associated *proximalPrimitiveConstraint* and all required refinements in the *proximalPrimitiveRefinement* either match a defining relationship on the given focus concept, or match a refinement condition added to the expression being authored;
2. Determine the set of valid attributes for the given domains using the `|MRCM attribute domain reference set|` and allow refinements to be added using attribute concepts from this set;
3. For each attribute used to define the concept, ensure that the grouping and cardinality are valid according to the rules specified in `|MRCM attribute domain reference set|` for the given attribute and parent domain;
4. Determine the valid range for each attribute using the *rangeConstraint* in `|MRCM attribute range reference set|`.

Please note that in the above process only rules with a `contentType = << 723595009 |All postcoordinated SNOMED CT content|` should be used. Rules with a `ruleStrength` of `|Mandatory concept model rule|` should be enforced when authoring and cause an error during validation, while rules with a `ruleStrength` of `|Optional concept model rule|` should be used as a recommendation for authoring and result in a warning during validation.

An alternative approach to authoring and validating postcoordinated expressions is to use the *domainTemplateForPostcoordination* from the `|MRCM domain reference set|` to ensure compliance with the full set of attribute rules. The *domainTemplateForPostcoordination* can also be specialized into an expression authoring template that meets the needs of a particular use case, while still conforming to the overall rules of the domain.

To support the authoring and validation of SNOMED CT expression constraints and queries the following MRCM process can be used:

1. Determine which domains the constraint or query belongs to using the `|MRCM domain reference set|`

- An expression constraint or query belongs to a given domain if either:
 - a. All focus concepts are valid when tested against the associated *proximalPrimitiveConstraint*; or
 - b. The constraint or query belongs to a parent domain of the given domain.
 - *Please note*: The concept model requirements for constraints and queries are more relaxed than those for postcoordinated expressions, because their role is to define the membership of a set of concepts or expressions, rather than restrict the manner in which a single concept or expression may be defined.
- 2. Determine the set of valid attributes for the given domains using the [MRCM attribute domain reference set](#) and allow refinements to be added using attribute concepts from this set;
- 3. For each attribute used to define the concept, ensure that the grouping and cardinality are consistent with the rules specified in [MRCM attribute domain reference set](#) for the given attribute and parent domain. In particular:
 - An attribute should only be grouped in an expression constraint or query if it specified as *grouped*= 1 for that domain in [MRCM attribute domain reference set](#). Any attribute can appear as ungrouped in an expression constraints.
 - A cardinality constraint used in an expression constraint or query should be the same, or stricter than the cardinality specified for the given attribute and domain in [MRCM attribute domain reference set](#).
- 4. Determine the valid range for each attribute using the *rangeConstraint* in [MRCM attribute range reference set](#).

Please note that if the expression constraint or query is being applied to a substrate that includes only precoordinated content, then only the MRCM rules with a *contentType* = << 723594008 [All precoordinated SNOMED CT content](#) should be used. However, if the expression constraint or query is being applied to a substrate that may include both precoordinated and postcoordinated content, then the less restrictive rules (e.g. with broader ranges) that apply where *contentType* = << 723595009 [All postcoordinated SNOMED CT content](#) may be used. Rules with a *ruleStrength* of [Mandatory concept model rule](#) should be enforced when authoring and cause an error during validation, while rules with a *ruleStrength* of [Optional concept model rule](#) should be used as a recommendation for authoring and result in a warning during validation.

Natural Language Processing

The MRCM can also be used to support Natural Language Processing (NLP), as described in [2. Use Cases](#). When terms used in free text are associated with a particular SNOMED CT concept, this concept can be tested for membership in specific MRCM domains using the process above for authoring postcoordinated expressions. As per this process, if the concept is found to belong to one of the domains, then the [MRCM attribute domain reference set](#) can be used to determine its possible attributes, and the [MRCM attribute range reference set](#) used to determine the valid values of these attributes. This process can thus be used to indicate possible ways in which the discovered concept may be linked (via suitable SNOMED CT attributes) to concepts found in the surrounding text.

Optimizations to the MRCM rules may also be adopted by NLP implementations to simplify the testing of membership in a potential range. For example, each range constraint could be split into its separate subhierarchies to allow simple techniques, such as a transitive closure table, to be used.

For more information on using SNOMED CT in Natural Language Processing, please refer to [Data Analytics with SNOMED CT](#).

Terminology Binding to Information Models

[2. Use Cases](#) describes using the MRCM to suggest possible SNOMED CT terminology bindings for an information model, to ensure that the bindings are consistent (at least at a high level) with the SNOMED CT concept model, and to support the design of expression templates.

The processes above for authoring SNOMED CT postcoordinated expressions, expression constraints and queries can similarly be applied to support terminology binding. Alternatively, new use case specific MRCM reference sets could be developed, which restrict the available attributes and ranges that may be used in a specific implementation scenario.

Versioning

As mentioned in [3. Requirements \(D.5\)](#), the concept model must be able to be changed between releases to fix identified issues and enhance future releases.

The RF2 reference set format used in the design of the MRCM provides a standard way of versioning the MRCM and retaining a history of changes, to enable the concept model to evolve over time. Using this standard approach, the *effectiveTime* field is used to reflect the date on which each rule version comes into effect, while the *active* field is used to indicate whether a rule is active or inactive. A new version of an MRCM rule may be created to update the mutable fields in the reference set, while changing immutable fields requires the rule to be inactivated, and a new rule to be created.

When a new or updated rule is introduced to the MRCM, it may take a period of time before all existing content conforms to the new rule. In these situations, a content type of [723593002 |All new precoordinated SNOMED CT content|](#) can be used, to ensure that all new content obeys the rule. Over time, as the old content is updated to reflect the new rule, the content type may be changed to either [723594008 |All precoordinated SNOMED CT content|](#) or [723596005 |All SNOMED CT content|](#). This approach can be used to ensure that all new content added to SNOMED CT conforms to high quality concept model rules, even though reviewing and correcting existing content may take additional time.

Extension

As described in [3. Requirements \(D.6\)](#), the international MRCM rules defined by SNOMED International must be able to be extended and adapted by organizations developing SNOMED CT extensions, to support the concept model requirements of their extension content.

To support this requirement, SNOMED CT extension developers will be able to copy the international MRCM rules defined by SNOMED International into one or more extension MRCM reference sets and edit these reference sets to add new rules and restrict or extend the existing rules as required. New MRCM reference sets created for a SNOMED CT extension must be designed to ensure consistency and data integrity between editions. Please note that if *no* changes to the SNOMED CT concept model are required to support an extension, *no* additional MRCM reference sets need to be created, as the international MRCM can be reused by the extension.

The [723563008 |MRCM Module Scope Reference Set|](#) is designed to allow extension developers to specify which MRCM reference sets should be applied to the content in each module. The [723563008 |MRCM Module Scope Reference Set|](#) should therefore be referred to, to determine whether an extension is reusing the international MRCM, or using a customized extension MRCM to support its content.