

# SNOMED Nursing Clinical Reference Group (CRG)

*June 2024*



# Current Subhierarchy View

Parents

- ▶ Procedure (procedure)
- ▲ Regimes and therapies (regime/therapy)

● Feeding and dietary regime (regime/therapy) ☆ 📄  
SCTID: 384760004  
384760004 | Feeding and dietary regime (regime/therapy) |  
en Feeding and dietary regime (regime/therapy)  
en Feeding and dietary regime

No attributes

Children (5)

- ▶ Dietary regime (regime/therapy)
- ▶ Feeding regime (regime/therapy)
- Nutrition / feeding management (regime/therapy)
- ▶ Nutrition therapy (regime/therapy)
- Restricting oral intake (regime/therapy)

# Reorganization

## Feeding and Dietary Regime

- Organize more logically
  - Duplicates? Enteral hyperalimentation (regime/therapy) vs Enteral feeding (regime/therapy)
  - Outdated? Forced feeding of patient (regime/therapy)
  - Meaning? Provision of a special diet (regime/therapy)
  - Identify possible definitions of the high level content
- Review from a practice perspective
- Mindful of their use in HL7 Standards (eg, Dietary regime)

# Concerns Identified

● Feeding and dietary regime (regime/therapy)  
SCTID: 384760004
☆

No attributes

384760004 | Feeding and dietary regime (regime/therapy)

en Feeding and dietary regime (regime/therapy)

en Feeding and dietary regime

Children (5)

- ▼ ● Dietary regime (regime/therapy)
  - ● Advance diet as tolerated (regime/therapy)
  - ● Atkins diet (regime/therapy)
  - ● Cantonese diet (regime/therapy)
  - > ● Carbohydrate modified diet (regime/therapy)
  - ● Cardiovascular Health Integrated Lifestyle Diet 1 (regime/therapy)
  - > ● Cholesterol modified diet (regime/therapy)
  - ● Decreased oxalate diet (regime/therapy)
  - ● Diet staging (regime/therapy)
  - ● Dietary Approaches to Stop Hypertension diet (regime/therapy)
  - > ● Dietary liquid consistency diet (regime/therapy)
  - ● Dietary treatment for disorder (regime/therapy)
  - > ● Energy modified diet (regime/therapy)
  - > ● Enteral feeding (regime/therapy)

- > ● Texture modified diet (regime/therapy)
- > ● Vegetarian diet (regime/therapy)
- > ● Vitamin modified diet (regime/therapy)
- ▼ ● Feeding regime (regime/therapy)
  - ● Enteral hyperalimentation (regime/therapy)
  - > ● Feeding patient (regime/therapy)
  - ● Weaning from breast feeding (regime/therapy)

# Questions

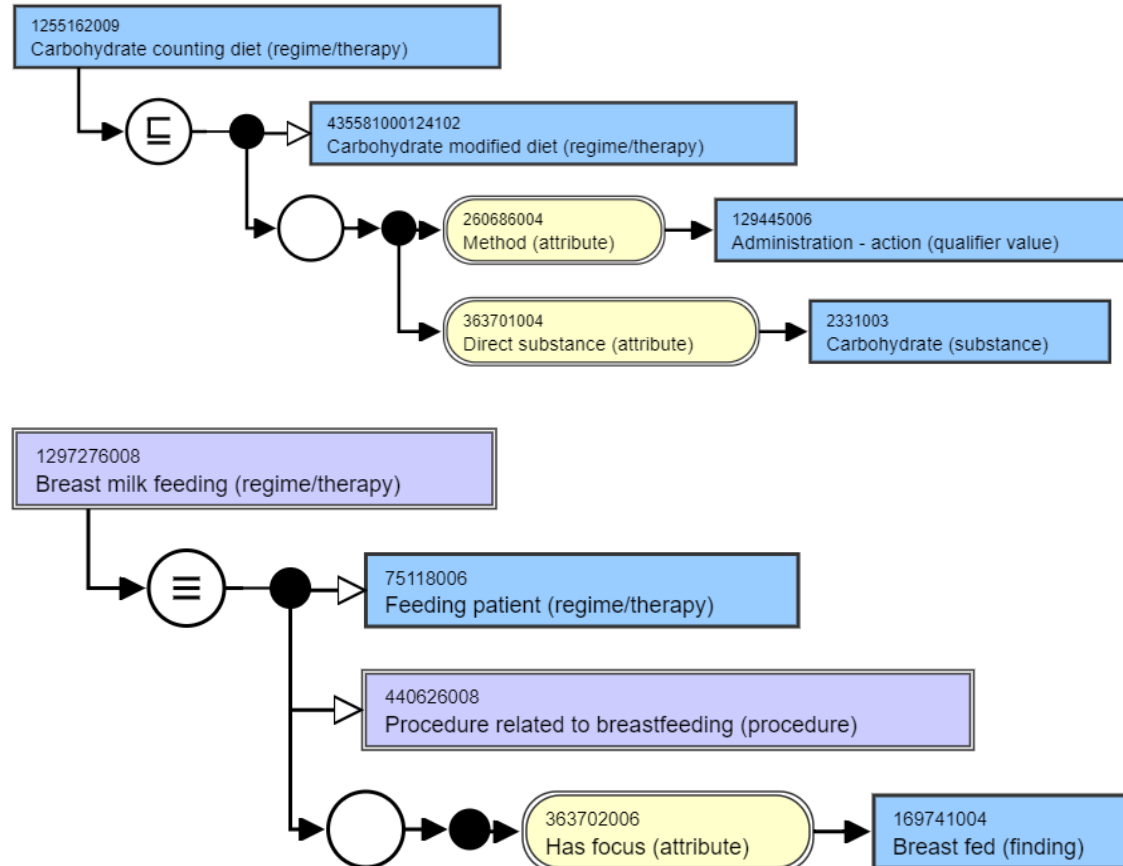
---

- Similar
  - Restricting oral intake (regime/therapy)
  - Restricting food intake (regime/therapy)
- Different
  - Self-care assistance: feeding (regime/therapy)
  - Mealtime assistance (regime/therapy)
- Scope of meaning
  - Counseling about nutrition using cognitive behavioral theoretical approach (regime/therapy)
  - Vitamin and mineral supplement therapy (regime/therapy)

# Modeling

## Feeding and Dietary Regime

Primitive (blue) content vs Sufficiently defined (purple)



# Working Definitions

---

Nutrition Therapy: Improving the health status of an individual by adjusting the quantities, qualities, and methods of **food and/or** nutrient intake.  
(adapted UMLS definition)

Concept	Working Definition
Nutrition Therapy	Actions affecting the quantities, qualities, and methods of food and/or nutrient intake. (adapted UMLS definition)
Dietary Regime	Actions affecting the quantities (eg, energy, potassium) or qualities (eg, texture, cultural) of a dietary regime.
Feeding Regime	Actions affecting the methods of a feeding regime.

# Recommended Top Concepts

---

Inactivate 384760004 |Feeding and dietary regime (regime/therapy)|

- Dietary regime (regime/therapy)
- Feeding regime (regime/therapy)
- Nutrition supplement therapy (regime/therapy): vitamin/mineral supplements, oral nutrition supplements
- Nutrition therapy for congestive heart failure (regime/therapy)
- Nutrition therapy for hypertension (regime/therapy)



IS A Nutrition therapy  
(regime/therapy)



# New Structure Proposed

---

Nutrition Therapy: Improving the health status of an individual by adjusting the quantities, qualities, and methods of **food and/or** nutrient intake.  
(adapted UMLS definition)

Concept	Working Definition
Nutrition Therapy	Actions affecting the quantities, qualities, and methods of food and/or nutrient intake. (adapted UMLS)
Dietary Regime	Actions affecting the quantities (eg, energy, potassium) or qualities (eg, texture, cultural) of a dietary regime.
Feeding Regime	Actions affecting the methods of a feeding regime.

# Nutrition Therapy: Retain

---

*Actions to affect the quantities, qualities, and methods of food and/or nutrient intake. (adapted UMLS)*

- Nutrition supplement therapy (regime/therapy):
  - Examples: Vitamin/mineral supplements, Oral nutrition supplement concepts
- Nutrition therapy for congestive heart failure (regime/therapy)
- Nutrition therapy for hypertension (regime/therapy)

# Nutrition Therapy: Reparent

*Actions to affect the quantities, qualities, and methods of food and/or nutrient intake. (adapted UMLS)*

- Weight management program (regime/therapy)→392134007 |Care regimes management (procedure)|
    - Weight gain regimen (regime/therapy)
    - Weight maintenance regimen (regime/therapy)
    - Weight reduction regimen (regime/therapy)
      - Actions to lose weight (regime/therapy)
      - Exercising to lose weight (regime/therapy)
      - Carbohydrate counting (regime/therapy)
      - Restricting food intake (regime/therapy)
- These retain parent of Weight management program and Nutrition therapy parent removed

# Nutrition Therapy: Reparent

*Actions to affect the quantities, qualities, and methods of food and/or nutrient intake. (adapted UMLS)*

Concept	Reparent/Action
Carbohydrate counting (regime/therapy)→	This remains child of Actions to lose weight with additional parent of Dietary regime (regime/therapy)
Restricting food intake (regime/therapy)→	This remains child of Actions to lose weight with additional parent of Dietary regime (regime/therapy)
Counseling about nutrition (regime/therapy)→	Retains parent of Counseling (procedure) and Nutrition therapy removed
Cholesterol reduction program (regime/therapy)→	Cardiac care management (procedure)
Nutrition management (regime/therapy)→	Inactivate as a duplicate of 410172000  Nutrition care management (procedure)
Pediatric feeding management (regime/therapy) Nutrition / feeding management (regime/therapy)	Children of 410172000  Nutrition care management (procedure)  and add as child of Feeding regime (regime/therapy)

# Dietary Regime: Retain

*Actions affecting the quantities (eg, energy, potassium) or qualities (eg, texture, cultural) of a dietary regime.*

- Nutrient and/or food modified diets
  - Examples: Protein modified diet (regime/therapy), Dietary Approaches to Stop Hypertension diet (regime/therapy)
- Allergy/intolerance diets
  - Examples: Tree nut free diet (regime/therapy), Lactose free diet (regime/therapy)
- Consistency/texture modified diets
  - Examples: International Dysphagia Diet Standardisation Initiative Framework - Thin Level 0 drinks (regime/therapy), Pureed diet (regime/therapy)
- Culture supportive diets
  - Examples: Hindu diet (regime/therapy), Halal diet (regime/therapy))

# Dietary Regime: Reparent

---

*Actions affecting the quantities (eg, energy, potassium) or qualities (eg, texture, cultural) of a dietary regime.*

- Dietary treatment for disorder (regime/therapy)→Nutrition Therapy
- Advance diet as tolerated (regime/therapy)→Nutrition Therapy

# Feeding Regime: Retain

*Actions affecting the methods of a feeding regime.*

- Bottle feeding of patient (regime/therapy)
- Self-care assistance: feeding (regime/therapy)
- Nutritional support (regime/therapy)
  - Enteral feeding (regime/therapy)
    - Examples: Nasal duodenal feeding (regime/therapy), jejunostomy feeding (regime/therapy), percutaneous endoscopic gastrostomy feeding (regime/therapy)
  - Parenteral feeding (regime/therapy)
    - Examples: Peripheral line feeding (regime/therapy), Central line feeding (regime/therapy)

# Feeding Regime: Reparent

---

*Actions affecting the methods of a feeding regime.*

- Fluid intake encouragement (regime/therapy)→remove Feeding regime and maintain Assisting with eating and drinking (procedure)
- Food intake encouragement (regime/therapy)→remove Feeding regime and maintain Assisting with eating and drinking (procedure)



# Intake Encouragement

Parents

- > ● Assisting with eating and drinking (procedure)
- > ● Feeding patient (regime/therapy)

● **Fluid intake encouragement (regime/therapy)** ☆

SCTID: 113148007

113148007 | Fluid intake encouragement (regime/therapy) |

en Fluid intake encouragement (regime/therapy)

en Fluid intake encouragement

Method → Assisting - action

Has focus → Finding of activity of daily living

Children (0)

No children

Parents

- > ● Assisting with activity of daily living (procedure)

● **Assisting with eating and drinking (procedure)** ☆

SCTID: 226010006

226010006 | Assisting with eating and drinking (procedure) |

en Assisting with eating and drinking (procedure)

en Assisting with eating and drinking

Method → Assisting - action

Has focus → Finding of activity of daily living

Children (6)

- ● Facilitation of sucking reflex (procedure)
- ● Fluid intake encouragement (regime/therapy)
- ● Food intake encouragement (regime/therapy)
- ● Mealtime assistance (regime/therapy)
- ● Menu selection assistance (procedure)
- ● Self-care assistance: feeding (regime/therapy)

# Inactivations

Routine feeding of patient (regime/therapy)	Inactivate as ambiguous (need to point to 2 concepts)→ Point toward 75118006 Feeding patient (regime/therapy) and 418995006 Feeding regime (regime/therapy)
Forced feeding of patient (regime/therapy)	Inactivate as outdated and point toward Nutritional support (regime/therapy), which has children Enteral feeding (regime therapy), and Parenteral feeding (regime therapy)
Tube feeding by Barron pump (regime/therapy) AND Enteral hyperalimentation (regime/therapy)	Inactivate as outdated and point toward Enteral feeding (regime/therapy)
Nutrition management (regime/therapy)	Inactivate as a duplicate of Nutrition care management (procedure)