



National Medicinal Product Catalogue

Irish National Drug Extension - Update

**Drug Extension User Support Group
April 2024**



Overview

- ✓ Overview of National Medicinal Product Catalogue
- ✓ Drug Extension Modelling
- ✓ Content Development to Date
- ✓ Tooling
- ✓ Early Learnings



National Medicinal Product Catalogue

- National medicines information standard for all healthcare settings
 - Common coding and descriptions
 - Common medicinal product information
- National service to support users to enable integrated medicines management.

Improved Patient Safety

Improved patient / user
experience of healthcare

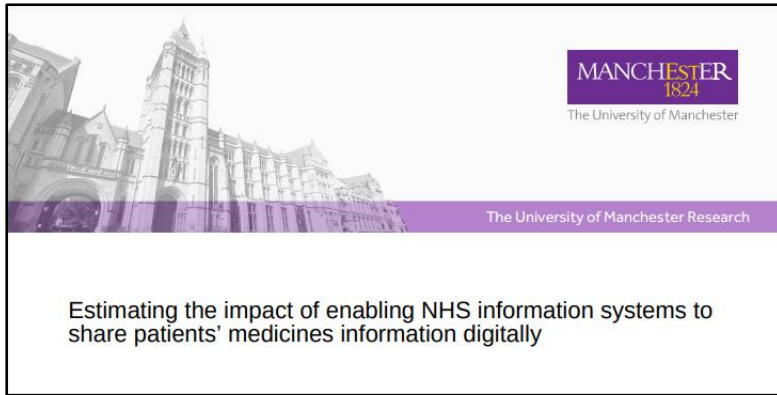


Improved healthcare worker
experience

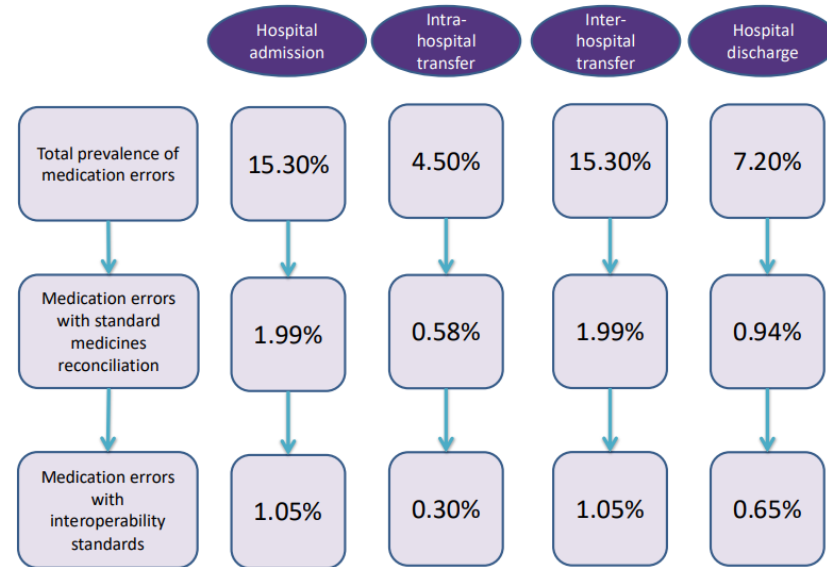
Improved use and re-use of
healthcare data



Standardised Information – National Impact



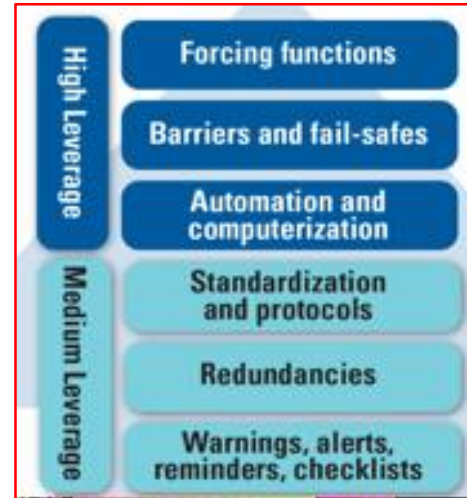
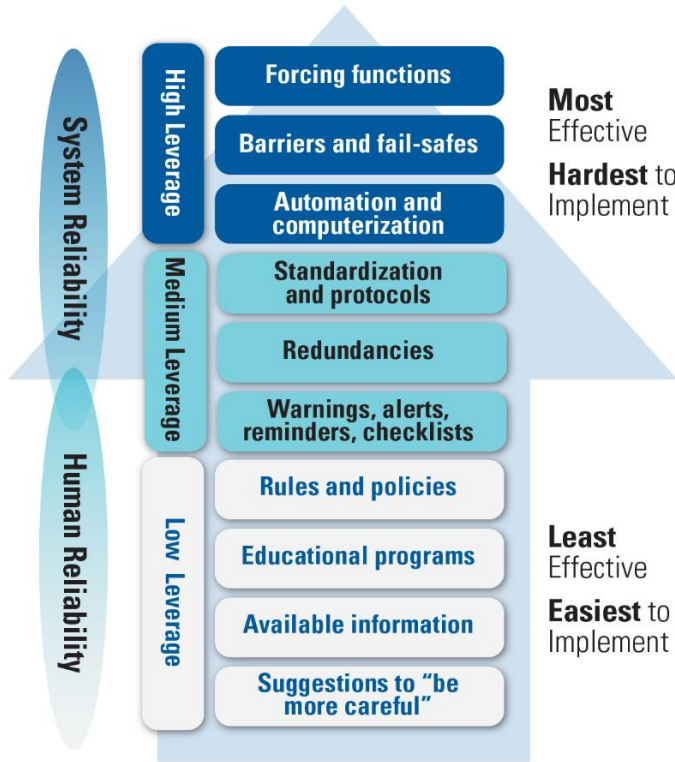
- Reduction in transition medication errors
- Reduction in patient harm from transition medication errors
- Reduction in excess bed days due to harm, and associated costs
- Reduction in deaths due to harm





Standardised Information – Local Impact

326875008 |Methotrexate 10 mg oral tablet|
- Route = 26643006 |Oral route|
- Substance = Methotrexate | 546375





NMPC & SNOMED-CT

- Establishing SNOMED-CT National Drug Extension is foundational step in development of NMPC.
- Provides anchor for all other information.
- NMPC expects to carry a range of information linked to requirements for functional use-cases. E.g.
 - GS1 GTINs
 - HPRA (Health Products Regulatory Authority)
 - PCRS (Primary Care Reimbursement Service)
 - Classification Coding Systems (e.g. ATC)



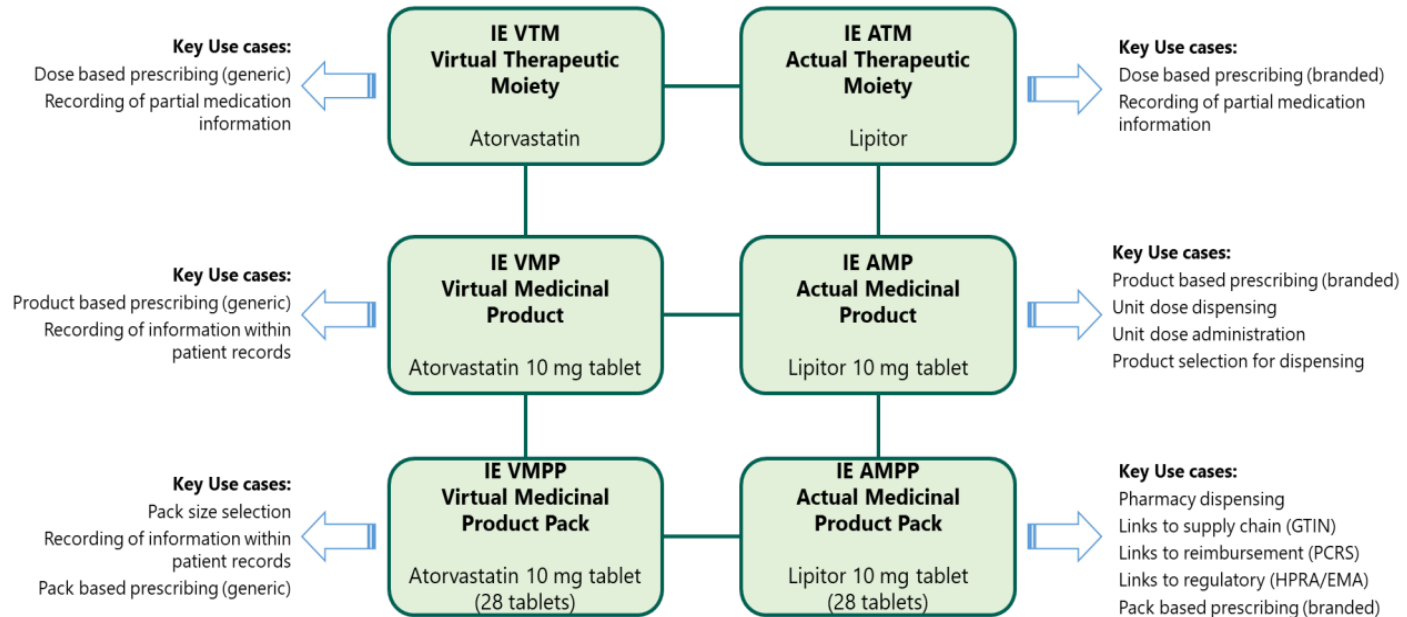
IE Drug Extension Operating Environment

- Ireland operates two modules:
 - IE Extension
 - IE Drug Extension
- Managed Service Member
- Current release schedule is six monthly.
- Drug modelling is based on:
 - International Drug Model
 - National Drug Extension Model
- Developmental releases of Drug Extension ongoing ahead of go-live of overall NMPC.



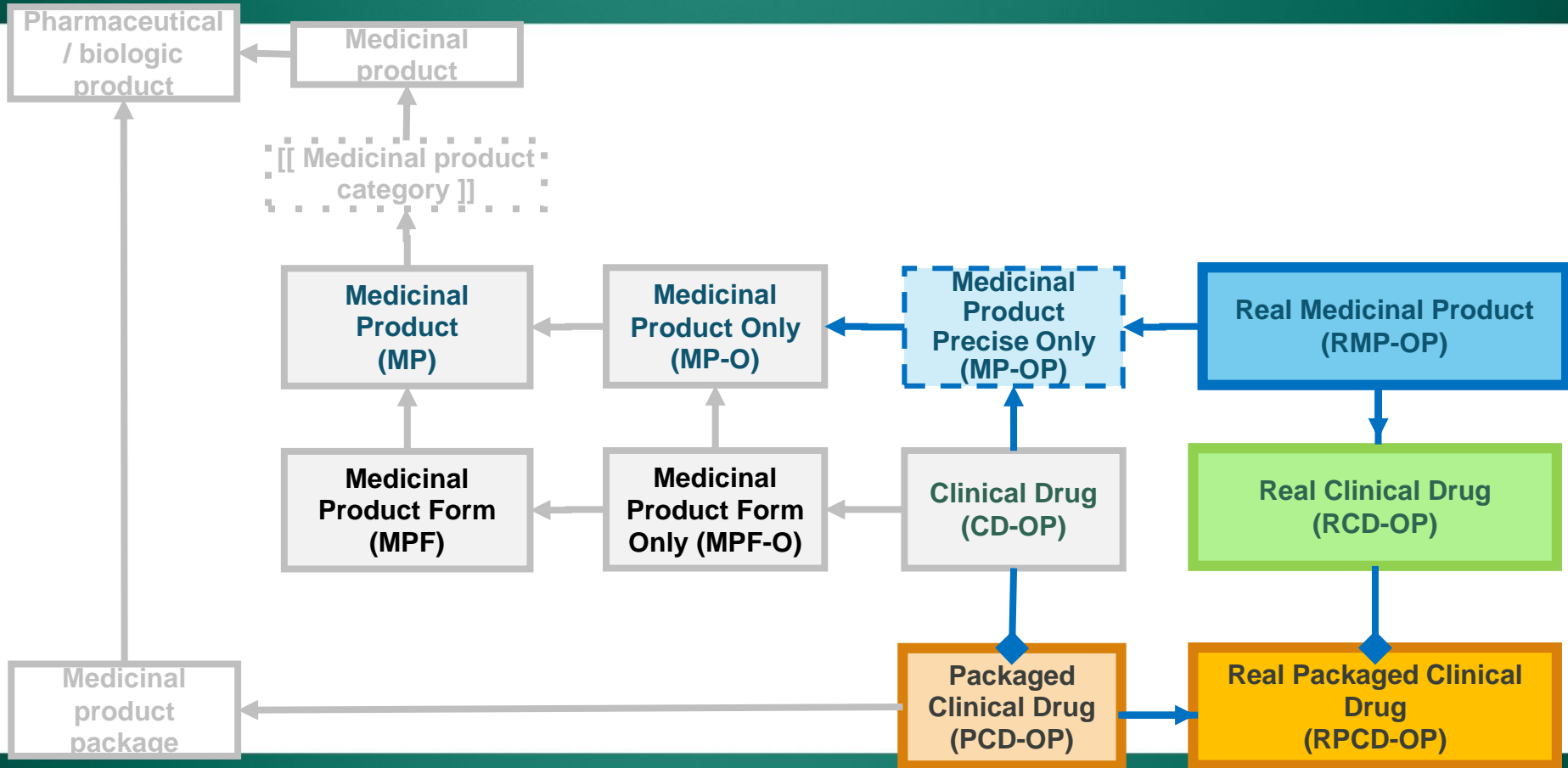
Modelling

National Medicinal Product Catalogue Data Model



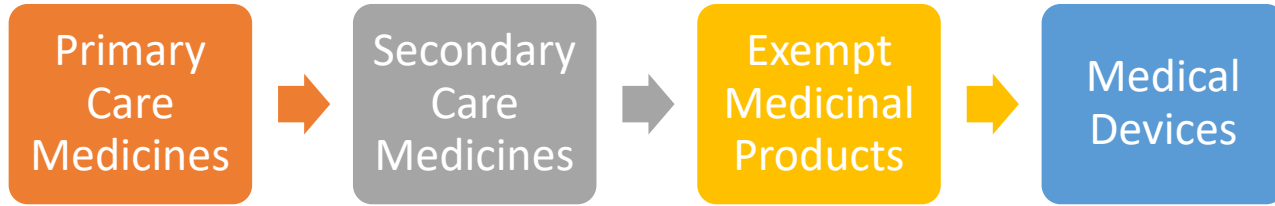


SNOMED-CT Drug Model





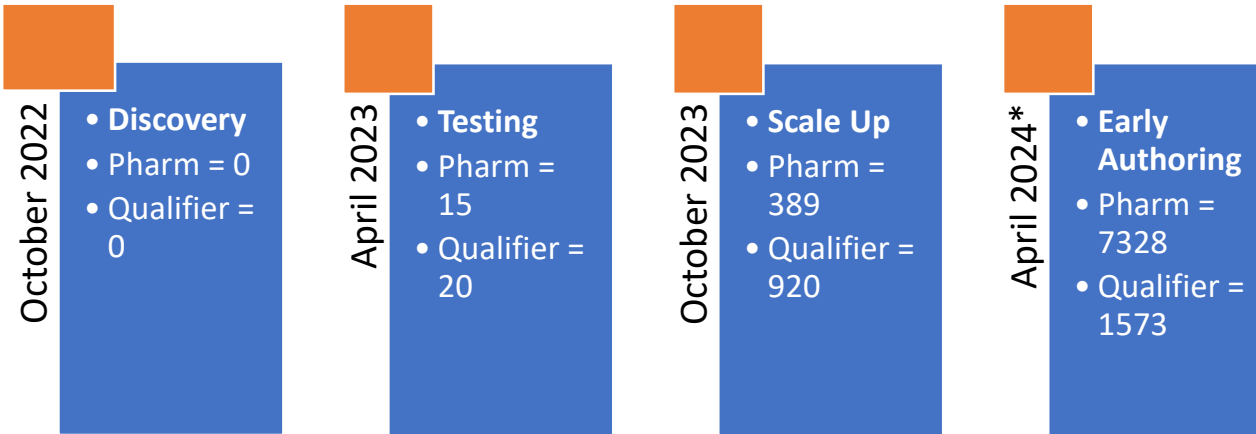
Content Development





Content Development

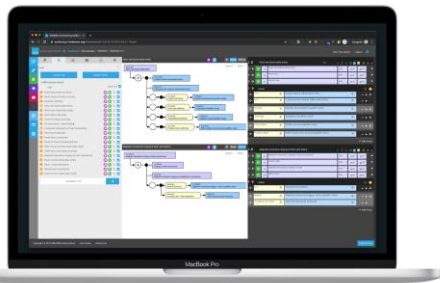
Primary Care Medicines





Internal Team Tooling

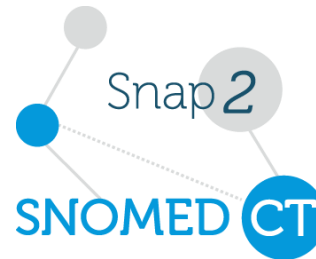
SI Authoring Platform



Local Information Management



Mapping



ECL

IHTSDO/[snomed-expression-constraint-...](#)

Formal syntax and valid examples for each version of ECL



3 Contributors 1 Issue 3 Stars 3 Forks





Early Learnings

- It takes time to refine processes
- Focus on use-cases
- Build a great team



Thank You
Q&A