

**SNOMED**  
International

## Reaching beyond healthcare boundaries: Social care content in SNOMED CT

---

Cathy Richardson

Senior Terminologist  
*SNOMED International*





## Overview

---

- SNOMED International
- What is SNOMED CT
- Why extend into Social Care
- Member Survey
- Social Care Pilot
- Ongoing Work





## About SNOMED International

A not-for-profit organization  
that owns and maintains  
SNOMED CT

Member-focused

48 Members globally  
Active stakeholder  
engagement

Used in over 80 countries  
worldwide

Established to build and  
strengthen SNOMED CT, other  
health terminologies and  
related products

Mission

to sustainably produce a  
global clinical vocabulary and  
other services that enables  
the clear exchange and  
analysis of health information  
for all



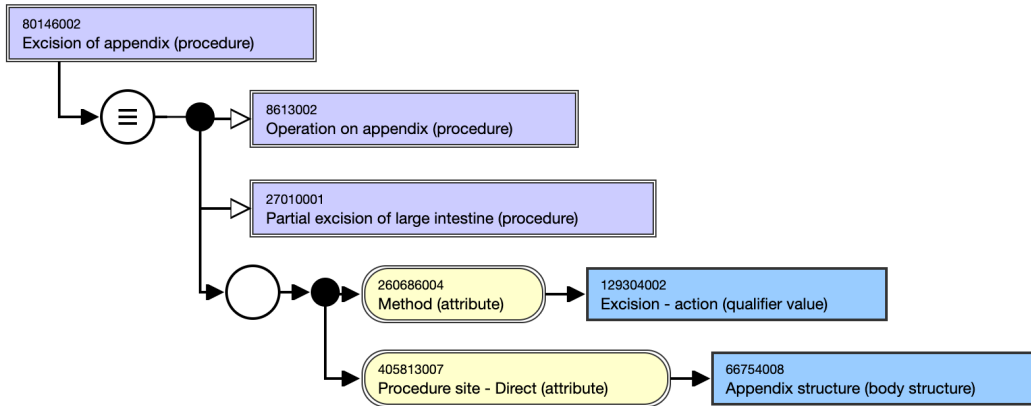


## What is SNOMED CT

- Comprehensive reference clinical terminology
  - Over 360,000 international concepts
- Validation of clinical content
- Built using description logic
- Provides a standardized way to represent meaning
- Mapped to other international standards
- Extendable – to meet national/local requirements



## SNOMED CT



- SNOMED CT Concept (SNOMED RT+CTV3)
  - Body structure (body structure)
  - Clinical finding (finding)
  - Environment or geographical location (environment / location)
  - Event (event)
  - Observable entity (observable entity)
  - Organism (organism)
  - Pharmaceutical / biologic product (product)
  - Physical force (physical force)
  - Physical object (physical object)
  - Procedure (procedure)
  - Qualifier value (qualifier value)
  - Record artifact (record artifact)
  - Situation with explicit context (situation)
  - SNOMED CT Model Component (metadata)
  - Social context (social concept)
  - Special concept (special concept)
  - Specimen (specimen)
  - Staging and scales (staging scale)
  - Substance (substance)



# Why Extend into the Social Care Domain?

## 2020 - 2025 Strategic Priority

Evolve SNOMED CT to best serve improvements in patient outcomes and meet the needs **of integrated health and social care systems** in a sustainable fashion

Strategy development is a collaborative process



## Social Care Survey

Survey of SNOMED International Member countries in order to understand

- The context and meaning of social care in these countries
- Current activities to expand/enhance SNOMED CT use in social care
- Current and future priorities for SNOMED CT use in social care

Responses from 18 countries were received





## Social Care Working Definition

The provision of social work, personal care, protection or social support services to children or adults in need or at risk, or adults with needs arising from illness, disability, old age or poverty

As agreed by Members



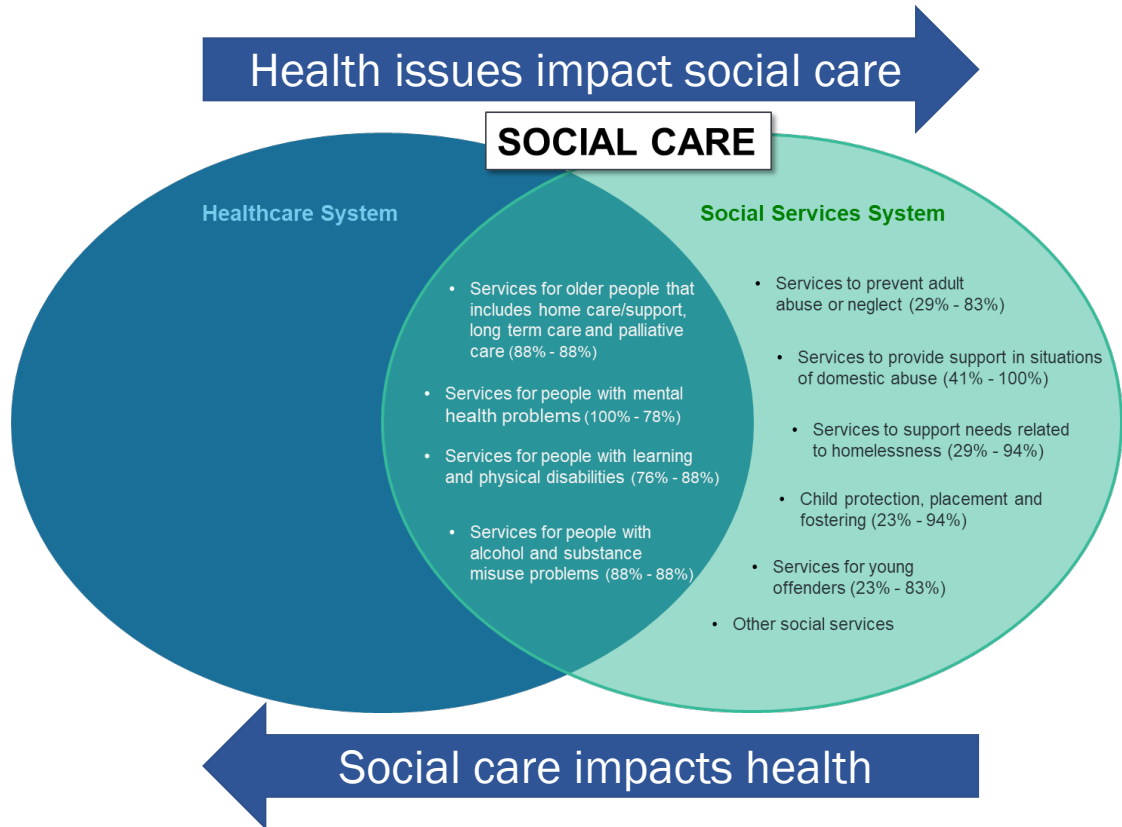


## Survey Findings

The term **social care** commonly used in several countries

**Social care services** predominately provided within the **social services system**

**SNOMED** use currently limited however national projects will see that **increase**





## Types of Services and Priority Areas

2022 - 2023

### Older People

Services for older people that includes home care/support, long term care and palliative care.

### Mental Health

Services for people with mental health problems.

### Alcohol/Substance Misuse

Services for people with alcohol and substance misuse problems.

### Disabilities

Services for people with learning and physical disabilities.

### Adult Abuse and Neglect

Services to prevent adult abuse or neglect.

### Domestic Abuse

Services to provide support in situations of domestic abuse.

### Homelessness

Services to support needs related to homelessness.

### Children

Child protection, placement, fostering and adoption services.

### Young Offenders

Services for young offenders.

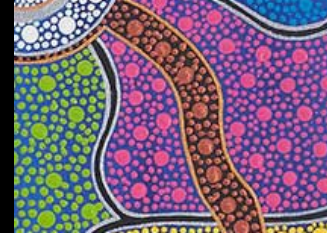


## Social Care Pilot

---

- Interviews – experts across countries/projects on requirements
- Develop five use cases per domain
- Determine categories relevant for social care
- Identification of concepts with validation by SMEs
  - 500 per domain
- Identification of content gaps





## Pilot Participants

---

- Countries
  - Australia, Denmark, Finland, Netherlands, Norway, UK, US
- Projects and subject matter experts
  - InterRAI project (AU)
  - Gravity project (US)
  - Oxford Public Health observatory (UK)
  - Kimberley Aboriginal Medical Services (AU)

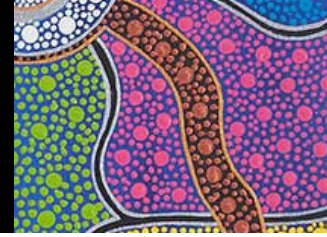




## Use Case Types for Each Domain

- Documentation of care
- Multidisciplinary care
- Monitoring of care over time
- Referral from one care situation to another
- Data aggregation





## Older Person Domain Use Case Example

- Sharing data within a multidisciplinary (health/social) care team
- Goal – continuity of care
- Actor examples – client, social care worker, community health nurse

### Scenario summary:

A 73-year-old widower with health issues that impact mobility  
Lives in a third-floor apartment with stair only access  
Rarely seen by neighbours and has issues with loneliness





## Issues from Other Use Cases

---

- Substandard housing
- Financial insecurity
- Family violence
- Relationship difficulties
- Language barriers



In addition to the domain focus e.g., substance misuse



## Categories

---

Categories were topic areas identified as relevant to social care.

Examples include

- Current situation such as living arrangement, financial status, support and social network, mental and emotional state
- Care – requirements, planning, delivery
- Goals and outcomes
- Procedures – assessment, screening, referral





## Content Requirements

Pilot looked at content specific to the social care use cases

	Concepts Required	Concepts Available	Concept Gaps	Category Gaps
Older People	704	465	232	7
Mental Health	674	534	101	39
Alcohol & Substance Misuse	626	480	139	7

Last two domains – additional searches reduced concept gaps



## Examples of Identified Concepts

- Unable to manage personal financial activities (finding)
- Has transportation to access health care (finding)
- Able to adapt after personal crisis (finding)
- Living in residence with poor sanitation (finding)
- Suspected victim of elder physical abuse (situation)
- Assessment of social interaction (procedure)
- Counseling about nutrition using social support strategy (regime/therapy)
- Family support (regime/therapy)





## Pilot Results

---

- Demonstrated an overlap between health and social care domains
- Demonstrated importance of sharing information between domains
- SNOMED CT International Release already has significant content to support social care
- Extensions also have content – potential for promotion
- Categories – identified areas to explore further



## Ongoing Content Work

- Review of use cases and categories
- Identification of subhierarchies with relevant content
- Identification of gaps in international content
- Review of extension concepts suitable to be moved to SNOMED CT International Release
- Meetings with project group SMEs to support filling of content gaps





## Further Information

---

**SNOMED**  
International

**Cathy Richardson**

SNOMED International

[info@snomed.org](mailto:info@snomed.org)

