

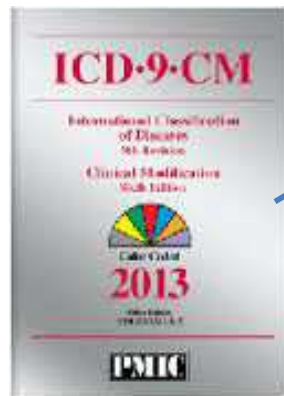
<http://www.theredrighthand.co.uk/57code.html>

Dr. F. Ameye, MD, FRCS (Eng), FACS -
Datamanagement - Federal Public Service Health -
Belgium



2

ICD-9-CM -> ICD-10-CM+ICD-10-PCS -> ICD-10-BE



Vol 1 Tabular list
Vol 2 Index
Vol 3 Procedures



ICD-10-PCS (Procedure Classification System)



3

Multi-axial code - 7 characters (Guideline A1)

Section	Body System	Root Operation	Body Part	Approach	Device	Qualifier
Alphabetic Index		(Guidelines A6, A7) →			Tables	

0-9, A-H, J-N, P-Z -> 34 alpha-numeric values (Guideline A2)
 (Z -> #6 or #7)

e.g. #2 CNS -> #4 Cervical plexus
 (Guideline A4)



Sections #1 (n=1+9+6)

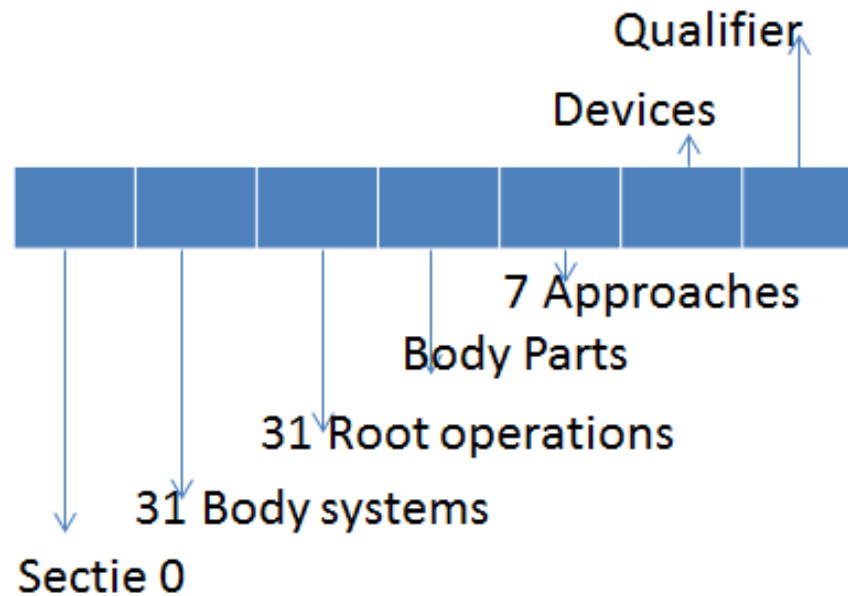
3121 terms

4	0	Medical and Surgical	61.896
	1	Obstetrics	300
	2	Placement	861
	3	Administration	1.384
	4	Measurement and Monitoring	339
	5	Extracorporeal Assistance and Performance	41
	6	Extracorporeal Therapies	42
	7	Osteopathic	100
	8	Other Procedures	60
	9	Chiropractic	90
	B	Imaging	2.934
	C	Nuclear Medicine	463
	D	Radiation Oncology	1.939
	F	Physical Rehabilitation and Diagnostic Audiology	1.380
	G	Mental Health	30
	H	Substance Abuse Treatment	59
	Total		71.918

86%



5 Section 0: Medical and Surgical



Section 0: #2 Body System (n=31)

6

0	Central nervous	J	Subcutaneous Tissue and Fascia
1	Peripheral nervous	K	Muscles
2	Heart and great vessels	L	Tendons-includes synovial membrane
3	Upper Arteries	M	Bursae and ligaments-incl synovial membrane
4	Lower Arteries	N	Head and Facial Bones
5	Upper Veins	P	Upper bones
6	Lower Veins	Q	Lower bones
7	Lymphatic and hemic- incl lymph vessels and nodes	R	Upper joints-incl. synovial membranes
8	Eye	S	Lower joints-incl. synovial membranes
9	Ear, Nose, Sinus	T	Urinary System
B	Respiratory	U	Female reproductive
C	Mouth and Throat	V	Male reproductive
D	Gastrointestinal	W	Anatomical regions, general
F	Hepatobiliary and pancreas	X	Anatomical regions, upper extremities
G	Endocrine	Y	Anatomical regions, lower extremities
H	Skin and Breast-incl. Skin and Breast glands and ducts		

Guideline B2.1a

Guideline B2.1b





Section 0: #3 Root operation

Intent or objective of the procedure

Full definition (Guideline B3.1a)



.be

8 Section 0: #3 Root Operations

Action

Target

Clarification



9

Take out some or all of a Body Part

- Excision (B)
- Resection (T)
- Extraction (D)
- Destruction (5)
- Detachment (6)



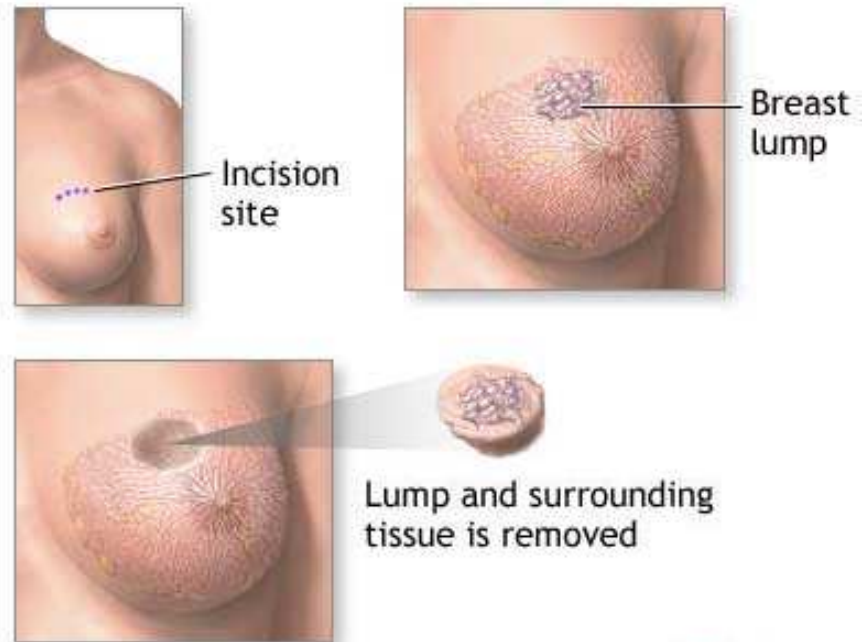
Take out: Excision (B)

Cutting out or off

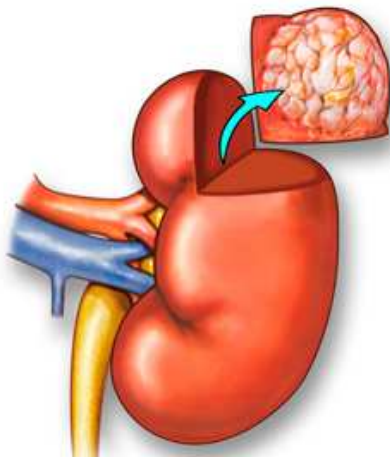
Some of a Body Part

W/o replacing Body Part

The #7 Qualifier *diagnostic* is used to identify excision procedures that are biopsies



Lumpectomy



<http://www.laparoboticsurgery.com/>

Partial Nephrectomy



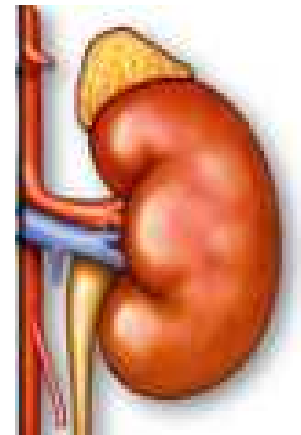
11

Take out: Resection (T)

Cutting out or off

All of a Body Part

W/o replacing Body Part



Total nephrectomy

<http://www.laparoboticsurgery.com/>



.be

12

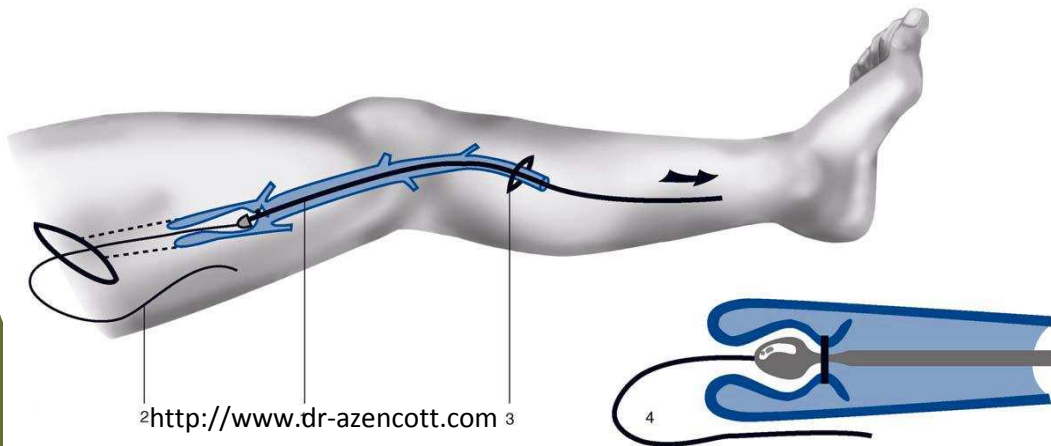
Take out: Extraction (D)

Pulling out or off

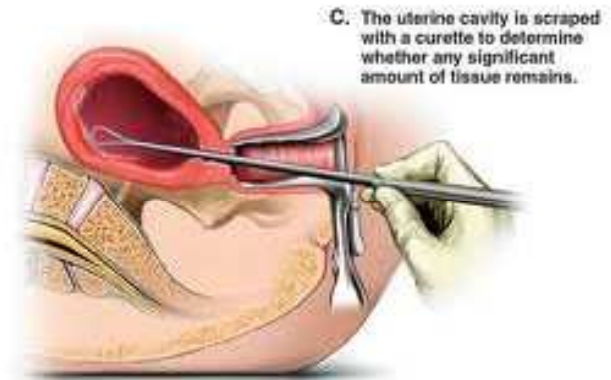
Some/all of a Body Part

W/o replacing Body Part

The #7 Qualifier *Diagnostic* (X) is used to identify Extractions that are biopsies



Vein stripping



D&C



Take out: Destruction (5)

Eradicating

Some/all of a Body Part

W/o taking out or replacing Body Part

Use of:

- Direct energy: fulguration, (cryo)ablation, cauterization
- Force
- Destructive agent



<http://www.laskinaesthetics.com/procedures/other-services/>

Fulguration

.be



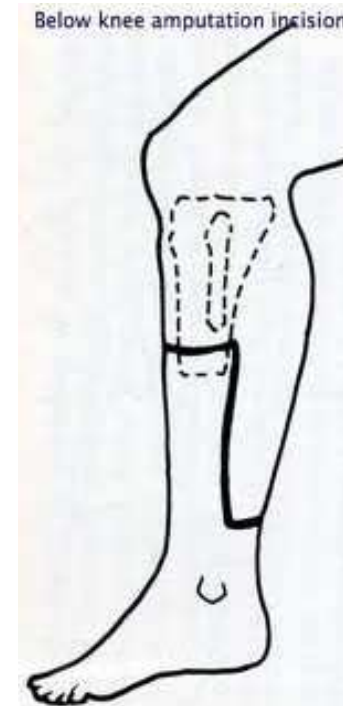
Take out: Detachment (6)

Cutting out/off

Extremity only, any level

W/o replacing extremity

- Body System #2 upper or lower anatomical region
- Body Part #4 Anatomical region
Upper extremity/ Lower Extremity
- Qualifier #7 level



<http://www.vascular.co.nz/Amputation%20surgery.htm>



15 Take out some/ all of Body Part

Operation	Action	Target	Clarification
Excision (B)	Cutting out or off	Some of a Body Part	W/o replacing Body Part
Resection (T)	Cutting out or off	All of a Body Part	W/o replacing Body Part
Extraction (D)	Pulling out or off	Some/all of a Body Part	W/o replacing Body Part
Destruction (5)	Eradicating	Some/all of a Body Part	W/o taking out or replacing Body Part
Detachment (6)	Cutting out	Extremity only, any level	W/o replacing extremity

Put in/back or move some/all of a Body Part

- Transplantation (Y)
- Reattachment (M)
- Reposition(S)
- Transfer(X)

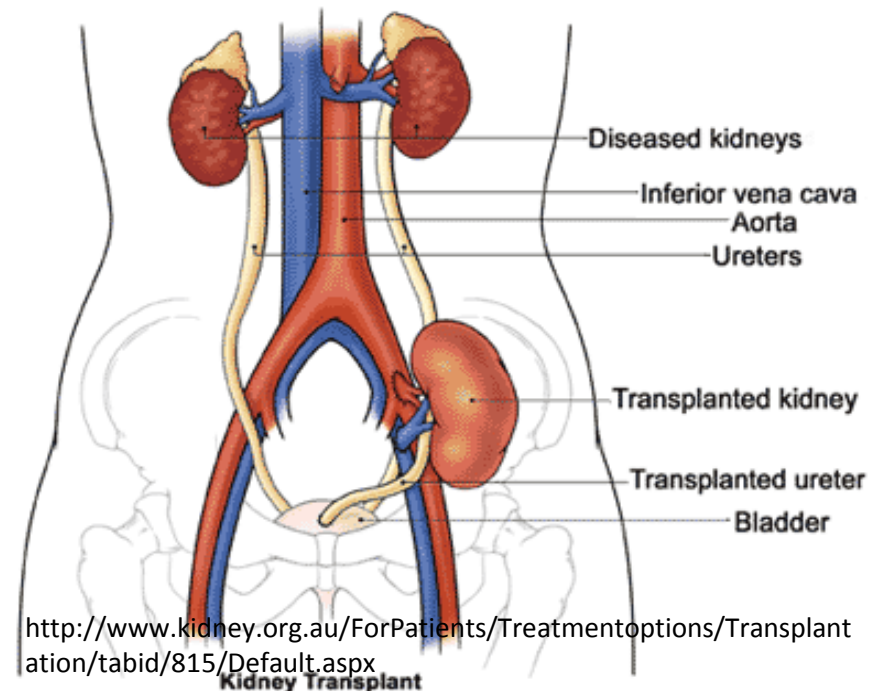


Put in/back or move: Transplantation (Y)

Putting in

Some/all of a living from Body Part from another individual or animal

Physically takes the place and/or function of some/all of a Body Part



Excl. (non-)autologous Stem Cell
“Transplantation” -> Administration
Section (Guideline B3.16)



Put in/back or move: Reattachment (M)

Putting back in or on

All or a portion of a separated Body Part

To its normal or other suitable location

The vascular circulation and nervous pathways may or may not be reestablished



Put in/back or move: Reposition (S)

Moving

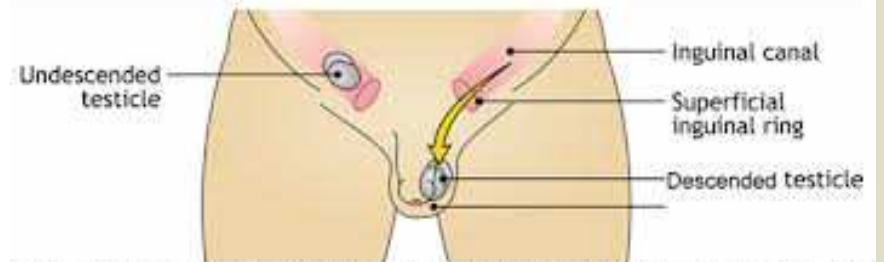
All or portion of a Body Part

Moving from

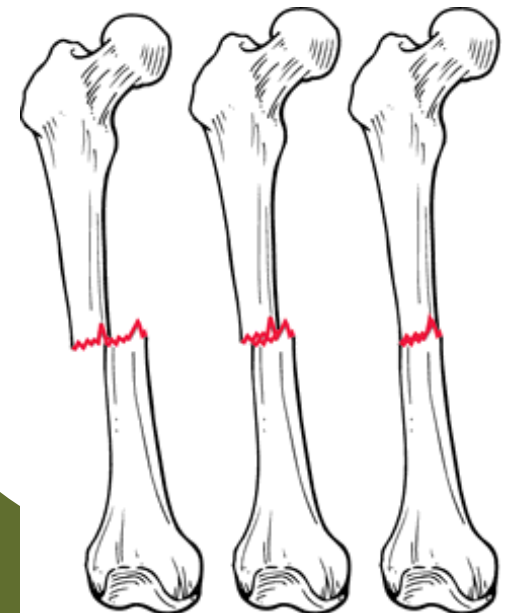
- an abnormal location to its normal or other suitable location
- a normal location where it is not functioning properly to another suitable location

Body Part may or may not be cut out or off

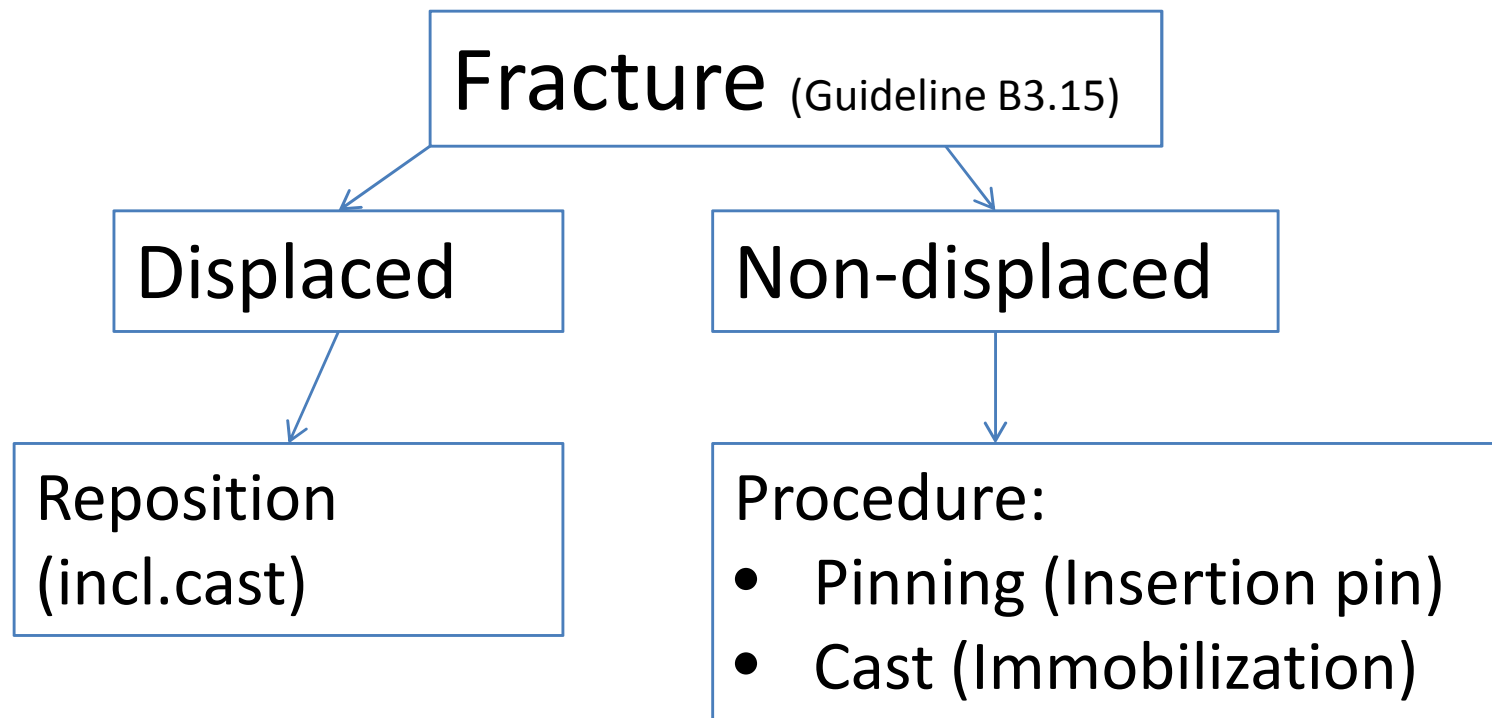
Diagram of undescended testicle



© Royal Children's Hospital, Melbourne, Australia. Kids Health Info www.rch.org.au/kidsinfo



Fracture reduction

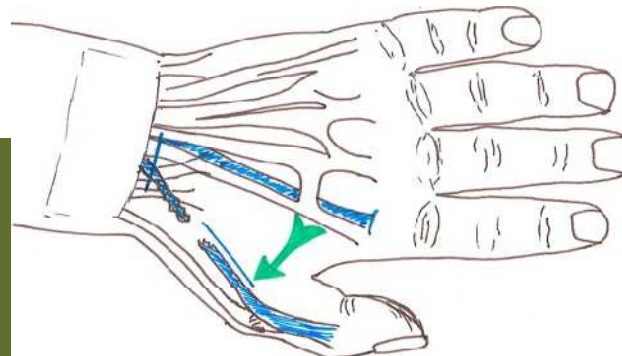
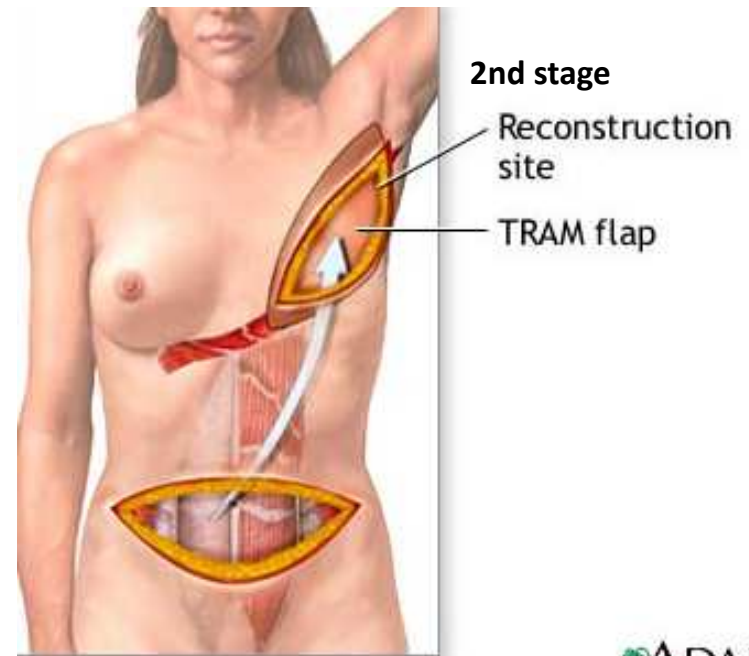


Put in/back or move: Transfer (X)

Moving to **function** for a similar Body Part

All or portion of a Body Part

- W/o taking out Body Part
- Assumes **function** of similar Body Part
- Remains connected to its vascular and nervous supply



<http://www.handandwrist surgery.org>

Tendon transfer

ADAM.

.be



Take out or eliminate solid matter, fluids or gases from (within) a Body Part

- Drainage (9)
- Extirpation (C)
- Fragmentation (F)



Take out or eliminate solid matter, fluids or gases from a Body Part: Drainage (9)

Taking or letting out

Fluids and/or gases from a Body Part

W/o taking out any of the Body Part.

The Qualifier #7 *diagnostic* (X) is used to identify drainage procedures that are biopsies

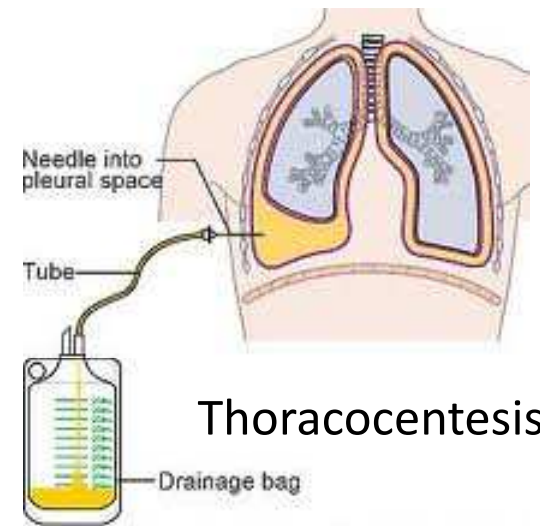


Diagram showing how a pleural effusion is drained
© CancerHelp UK



Take out or eliminate **solid matter**, fluids or gases from a Body Part: Extirpation (C)

Taking or cutting out

Solid matter within a Body Part

- W/o taking out any of the Body Part
- the solid matter may be an abnormal byproduct of a biological function or a foreign body
- it may be imbedded in a Body Part or in the lumen of a tubular Body Part
- it may (not) have been previously broken into pieces

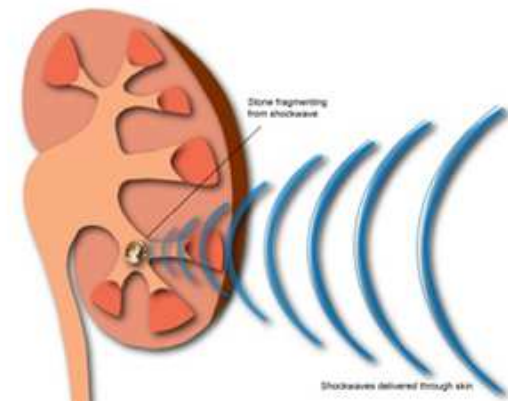


Take out or eliminate **solid matter**, fluids or gases from a Body Part: Fragmentation (F)

Breaking down

Solid matter into pieces within a Body Part

- the solid matter may be an abnormal byproduct of a biological function or a foreign body
- the physical force (e.g. manual, US) is applied directly or indirectly, **w/o taking out any of the Body Part or any solid matter**
- the pieces of solid matter are not taken out but eliminated or absorbed through normal biological functions



Lithotripsy



Procedures that involve only examination of Body Parts and Regions

- Inspection (J)
- Map (K)



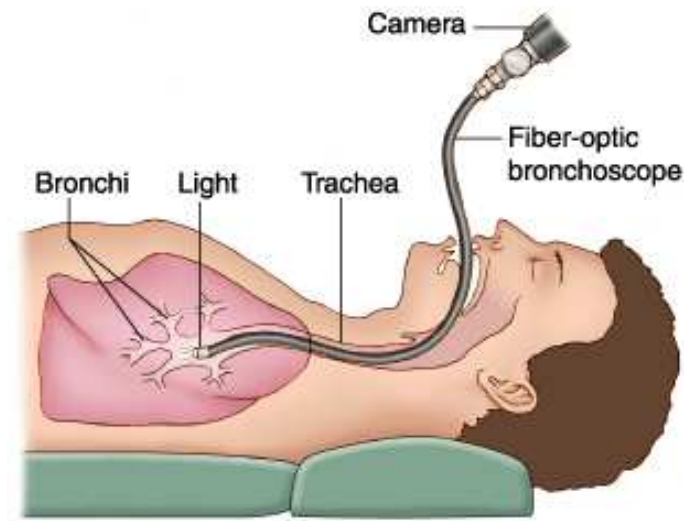
Examination: Inspection (J)

Visual and/or manual exploration

Some or all of a Body Part

Performed with or w/o optical instrumentation, directly or through body layers

Manual exploration may be performed directly or through intervening body layers



www.mdGuidelines.com/bronchoscopy

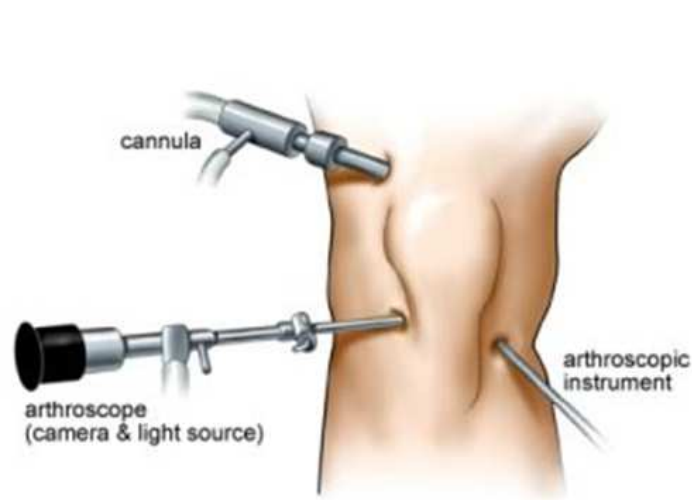


Inspection /knee joint ->
Meniscectomy (Excision –
Resection) /Arthroscopic

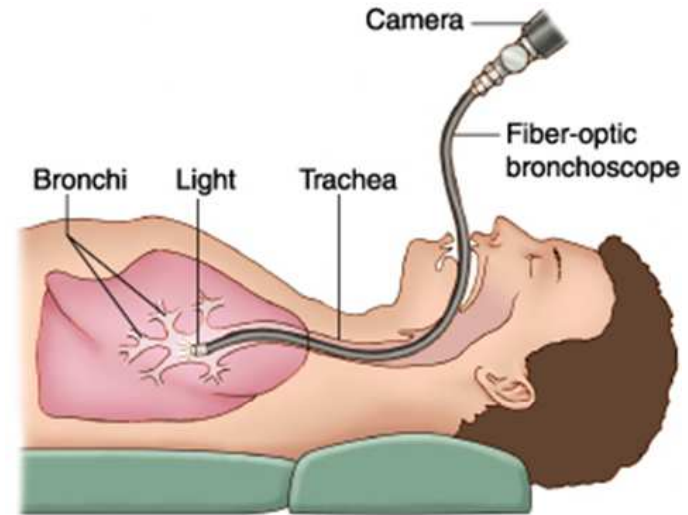
Inspection bronchus -> Administration
/*/Irrigation/Bronchus



Inspection of (a) Body Part(s) vs. Definitive procedure -> code Root Operation (Guideline B3.11a)



Inspection knee joint ->
Meniscectomy/Arthroscopic



Inspection bronchus ->
Administration section/*/Irrigation/
Bronchus



Examination: Map (K)

Locating

Route of passage of electrical impulses or functional areas in a Body Part

Applicable only to:

- **Cardiac** conduction system mechanism
- **Central Nervous System:** percutaneous mapping of basal ganglia or intraoperative whole brain mapping via craniotomy



Alter the Diameter/Route of a tubular Body Part

- Bypass (1)
- Dilation (7)
- Occlusion (L)
- Restriction (V)



Tubular Body Part

Hollow Body Part that provides a route of passage for solids, liquids, or gases in various systems:

- Cardio-Vascular
- Gastro-Intestinal
- Genito-Urinary
- Hepato-Biliary
- Respiratory

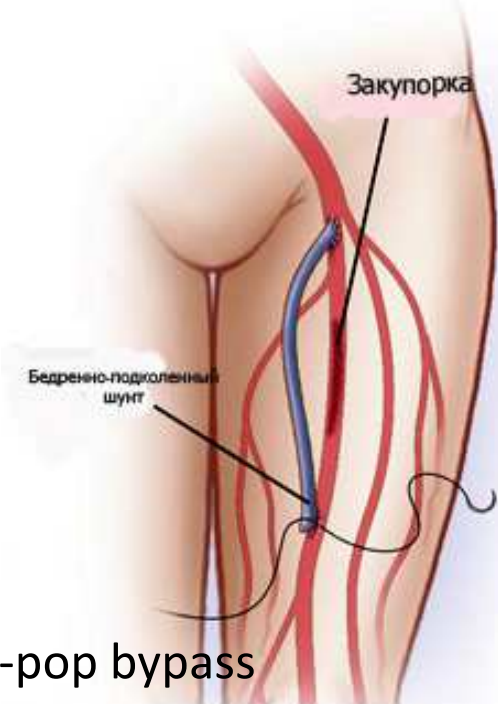


Alter the diameter/route of a tubular Body Part: Bypass (1)

Altering the route of passage

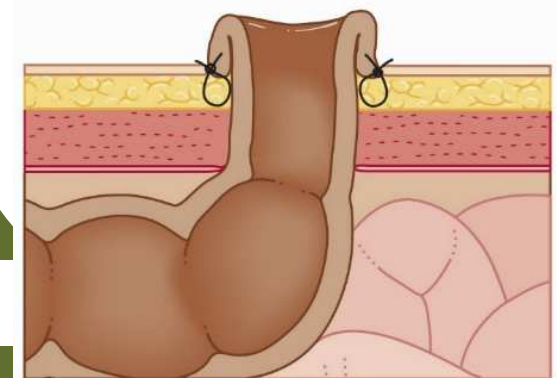
Contents of tubular Body Part

- May include use of living tissue, nonliving biological material or synthetic material which does not take place of the Body Part
- Includes one or more anastomoses, with or w/o the use of a Device
- To similar route and Body Part or abnormal route and dissimilar Body Part



Fem-pop bypass

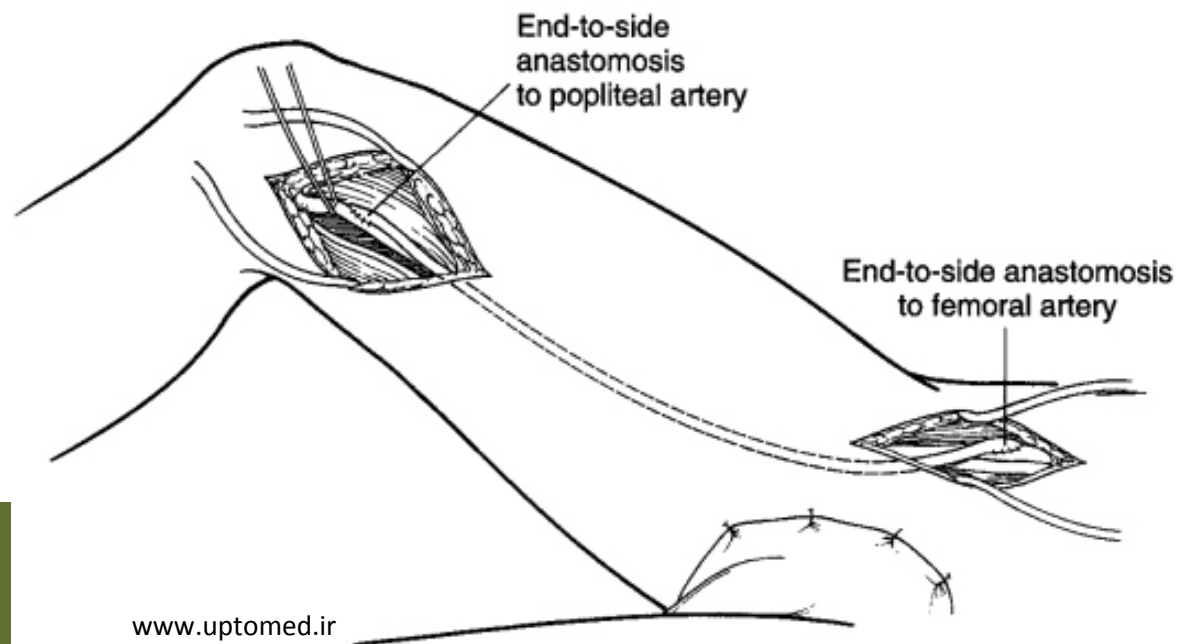
<http://www.angio-surgery.ru/>



Permanent colostomy

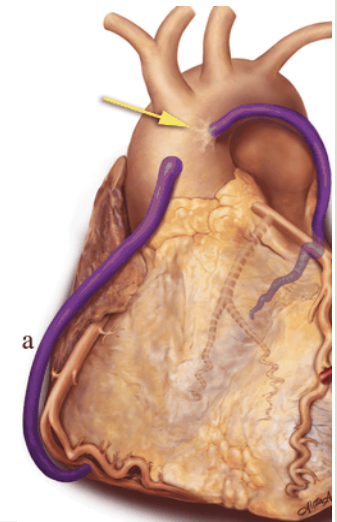
Bypass (Guideline 3.6a)

- #4 = Body Part bypassed from (i.e. Femoral artery)
- #7 = Body Part bypassed to (i.e. Popliteal artery)



34 (Venous) Bypasses - Coronary Arteries

(Guideline 3.6b)



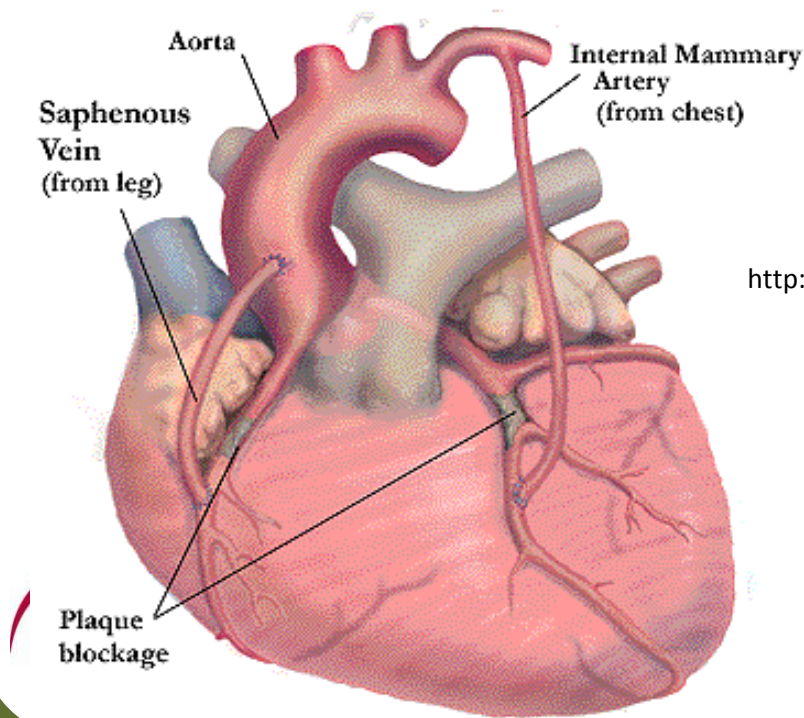
Code 021109W Bypass Coronary Artery, Two Sites from Aorta with Autologous Venous Tissue, Open Approach
Description

Body Part <input type="button" value="Clear"/>	Approach <input type="button" value="Clear"/>	Device <input type="button" value="Clear"/>	Qualifier <input type="button" value="Clear"/>
<p>Number sites treated</p> <ul style="list-style-type: none"> <input type="radio"/> 0 Coronary Artery, One Site <input checked="" type="radio"/> 1 Coronary Artery, Two Sites <input type="radio"/> 2 Coronary Artery, Three Sites <input type="radio"/> 3 Coronary Artery, Four or More Sites <input type="radio"/> 6 Atrium, Right <input type="radio"/> 7 Atrium, Left <input type="radio"/> K Ventricle, Right <input type="radio"/> L Ventricle, Left <input type="radio"/> V Superior Vena Cava <input type="radio"/> W Thoracic Aorta 	<ul style="list-style-type: none"> <input checked="" type="radio"/> 0 Open <input type="radio"/> 3 Percutaneous <input type="radio"/> 4 Percutaneous Endoscopic 	<ul style="list-style-type: none"> <input type="radio"/> 4 Intraluminal Device, Drug-eluting <input checked="" type="radio"/> 9 Autologous Venous Tissue <input type="radio"/> A Autologous Arterial Tissue <input type="radio"/> D Intraluminal Device <input type="radio"/> J Synthetic Substitute <input type="radio"/> K Nonautologous Tissue Substitute <input type="radio"/> Z No Device 	<ul style="list-style-type: none"> <input type="radio"/> 3 Coronary Artery <input type="radio"/> 4 Coronary Vein <input type="radio"/> 5 Coronary Circulation <input type="radio"/> 7 Atrium, Left <input type="radio"/> 8 Internal Mammary, Right <input type="radio"/> 9 Internal Mammary, Left <input type="radio"/> B Subclavian <input type="radio"/> C Thoracic Artery <input type="radio"/> D Carotid <input type="radio"/> F Abdominal Artery <input type="radio"/> P Pulmonary Trunk <input type="radio"/> Q Pulmonary Artery, Right <input type="radio"/> R Pulmonary Artery, Left <input checked="" type="radio"/> W Aorta

Body Part bypassed from

Multiple coding Bypass - Coronaries

(Guideline B3.6c)



<http://meddic.jp>

- 021009W
aorta
autologous venous tissue
one site

- 02100A9
L internal mammary
autologous arteria tissue
one site

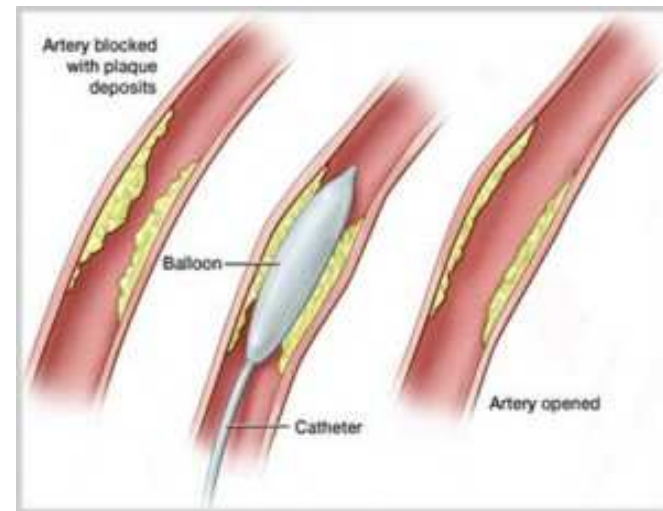


Alter the diameter/route of a tubular Body Part: Dilation (7)

Expanding

Natural/ artificially created orifice or lumen

By application of intraluminal pressure or by cutting the wall of the orifice



<http://www.ilowerbp.com/balloon-angioplasty/>

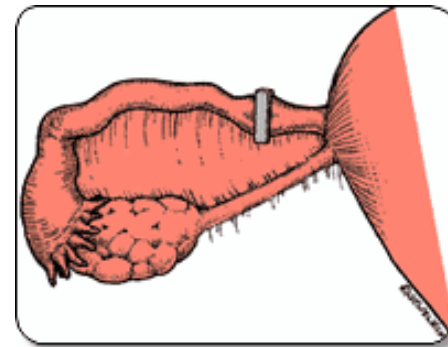


Alter the diameter/route of a tubular Body Part: Occlusion (L)

Completely closing

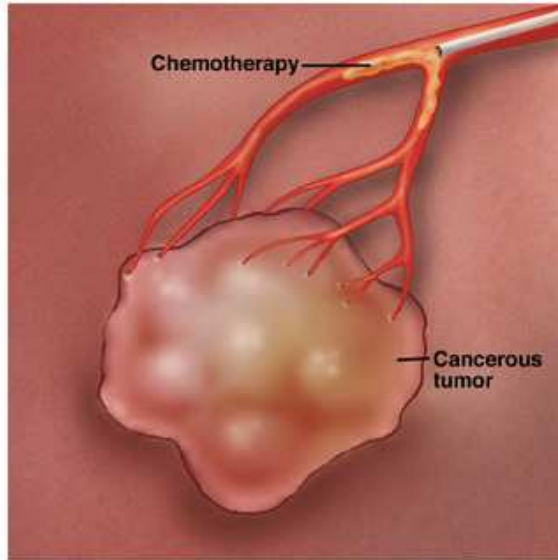
Orifice or lumen of tubular Body Part

Orifice may be natural or artificially created



<http://www.indiadiets.com/>

Clip fallopian tube



Chemo-embolization (Guideline B13.12)



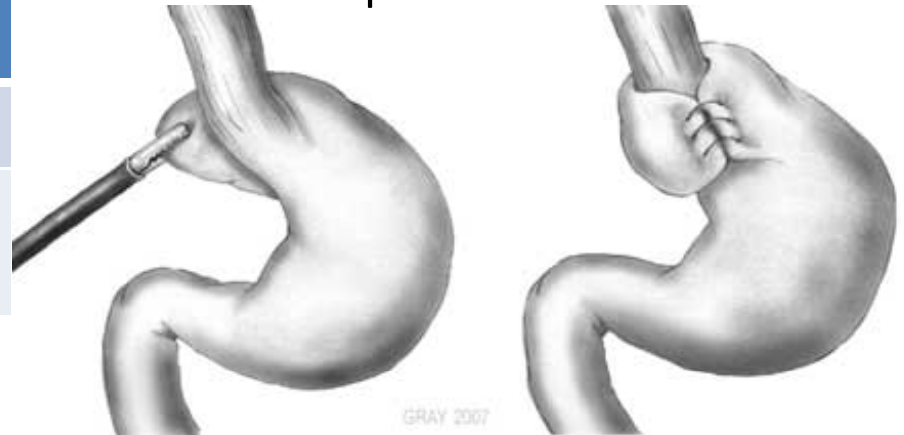
Alter the diameter/route of a tubular Body Part: Restriction (V)

Partially closing

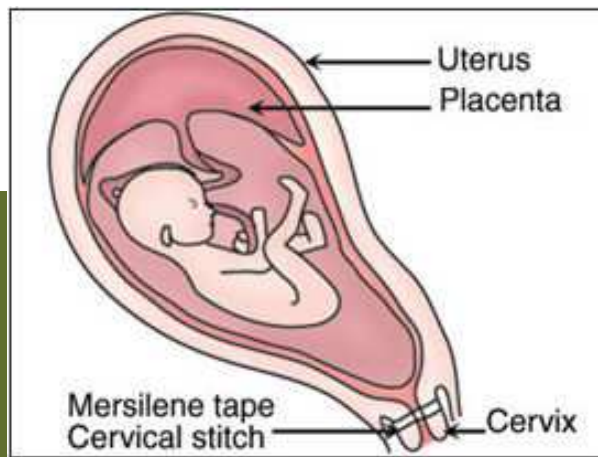
Orifice or lumen of a tubular Body Part

Orifice may be natural or artificially created

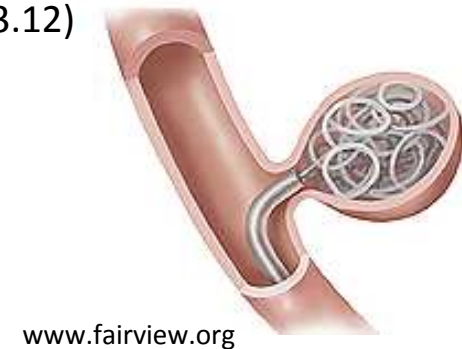
Nissen fundoplication



Cervical cerclage



Cerebral aneurysm embolization
(Guideline B3.12)



Always involve Devices

- Insertion (H)
- Replacement (R)
- Supplement (U)
- Removal (P)
- Change (2)
- Revision (W)



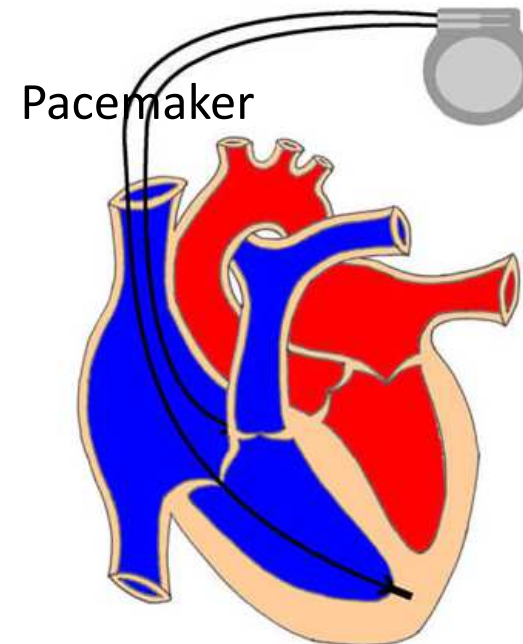
40 Always involves a Device: Insertion(H)

Putting in non-biological Device

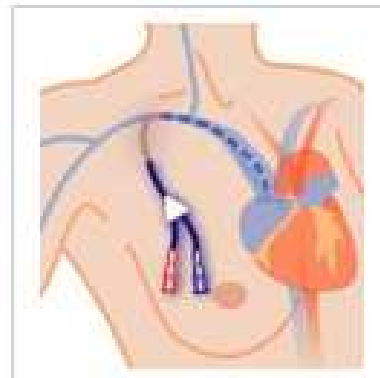
in or on a Body Part

Device that:

- monitors, performs, assists or prevents a physical function
- does not physically take the place of a Body Part



<http://missinglink.ucsf.edu/>



Art © Pam Stephan

Central venous catheter



41 ! Bladder catheter “Insertion” -> “Drainage”

Code Description		
0TH Urinary System, Insertion		
Body Part <input type="button" value="Clear"/>	Approach <input type="button" value="Clear"/>	Device <input type="button" value="Clear"/>
<input type="radio"/> 5 Kidney <input type="radio"/> 9 Ureter <input checked="" type="radio"/> B Bladder <input type="radio"/> C Bladder Neck <input type="radio"/> D Urethra <div style="border: 1px solid black; padding: 2px; width: fit-content;">Includes: Trigone of bladder</div>	<input type="radio"/> 0 Open <input type="radio"/> 3 Percutaneous <input type="radio"/> 4 Percutaneous Endoscopic <input type="radio"/> 7 Via Natural or Artificial Opening <input type="radio"/> 8 Via Natural or Artificial Opening Endoscopic <input type="radio"/> X External	<input type="radio"/> 2 Monitoring Device <input type="radio"/> 3 Infusion Device <input type="radio"/> L Artificial Sphincter <input type="radio"/> M Stimulator Lead

Code Description		
0T9 Urinary System, Drainage		
Body Part <input type="button" value="Clear"/>	Approach <input type="button" value="Clear"/>	Device <input type="button" value="Clear"/>
<input type="radio"/> 0 Kidney, Right <input type="radio"/> 1 Kidney, Left <input type="radio"/> 3 Kidney Pelvis, Right <input type="radio"/> 4 Kidney Pelvis, Left <input type="radio"/> 6 Ureter, Right <input type="radio"/> 7 Ureter, Left <input type="radio"/> 8 Ureters, Bilateral <input checked="" type="radio"/> B Bladder	<input type="radio"/> 0 Open <input type="radio"/> 3 Percutaneous <input type="radio"/> 4 Percutaneous Endoscopic <input checked="" type="radio"/> 7 Via Natural or Artificial Opening <input type="radio"/> 8 Via Natural or Artificial Opening Endoscopic <input type="radio"/> X External	<input checked="" type="radio"/> 0 Drainage Device <input type="radio"/> Z No Device

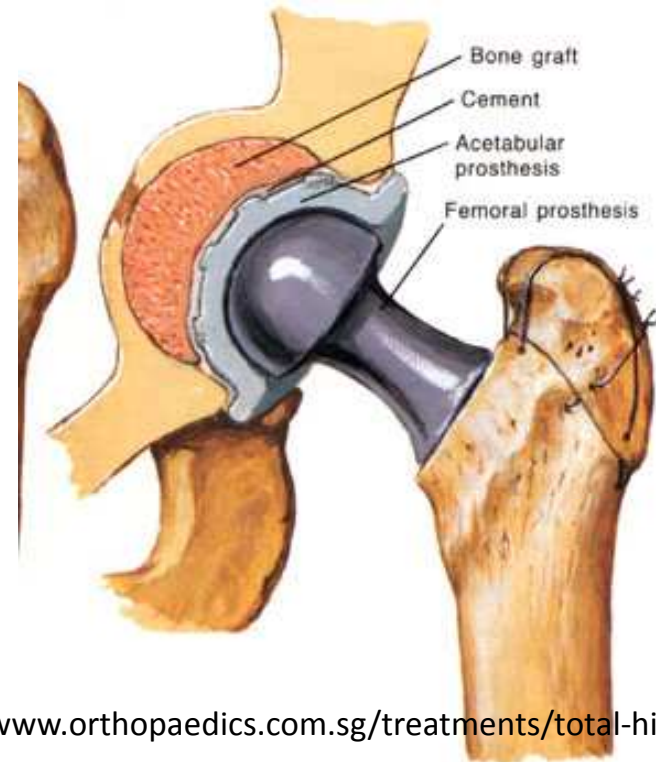
42 Always involves a Device: Replacement (R)

Putting in or on

Biological or synthetic material; living tissue taken from the same individual

Physically takes the place of all or a portion of a Body Part

A REMOVAL procedure is assigned for taking out the Device used in a previous Replacement procedure



<http://www.orthopaedics.com.sg/treatments/total-hip-replacement>



www.entusa.com

.be

Always involves a Device: Supplement (U)

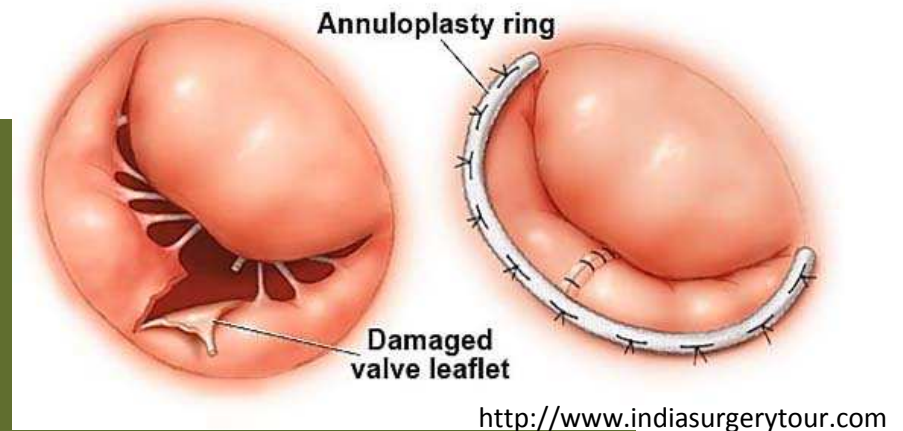
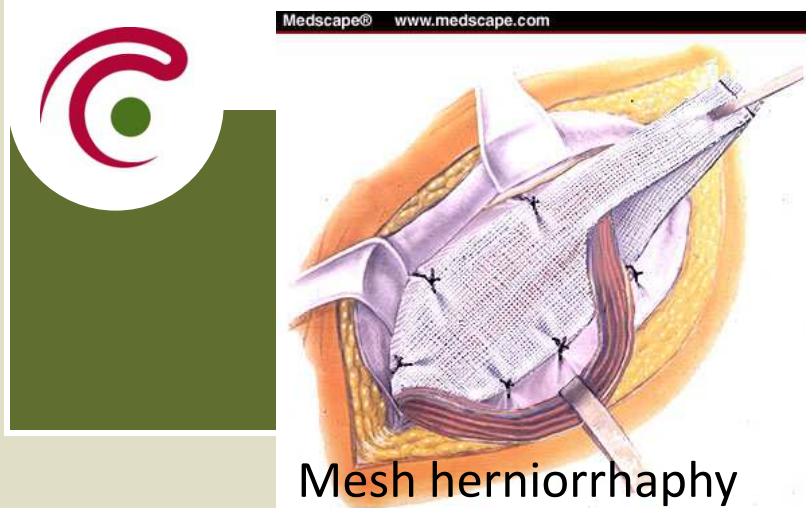
Putting in or on

Device that reinforces or augments the function of a portion of a Body Part

Material is:

- Biological
 - Non-living/ Living and from the same individual
- Synthetic

The Body Part may have been previously replaced



44 Always involves a Device: Removal (P)

Taking a Device out or off

Device from a Body Part

If a new Device is inserted:

- Without an incision or puncture, that procedure is coded to the root operation CHANGE
- Via an incision or puncture, that procedure is coded separately to the root operation performed



<http://emedicine.medscape.com/article/1681045-overview>

Pacemaker Removal



45 Always involves a Device: Change (2)

Taking a Device out or off and putting an identical or similar Device

In or on a Body Part

W/o cutting or puncturing skin or mucous membrane: all CHANGE procedures are coded using the EXTERNAL approach

e.g.

- Urinary catheter change
- Gastrostomy tube change



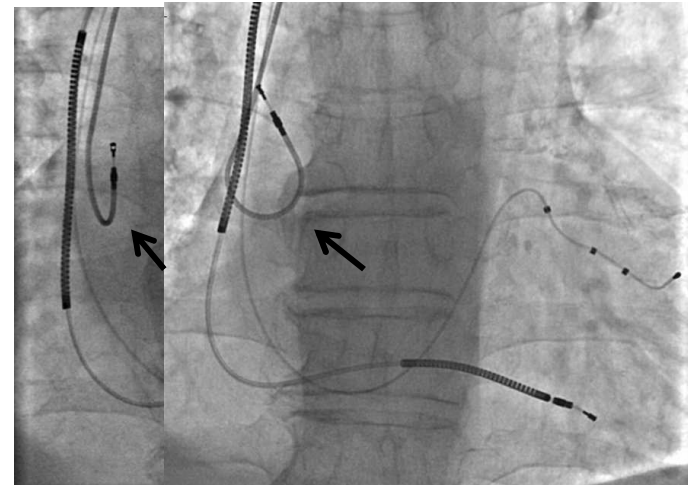
46 Always involves a Device: Revision (W)

Correcting

Malfunctioning or displaced Device in or on a Body Part

To the extent possible

! A complete re-do of a **procedure** is coded to the Root Operation e.g. removal hip prosthesis + replacement hip joint with new prosthesis



<http://www.elsevier.pt/en/revistas/revista-portuguesa-cardiologia-334/artigo/successful-percutaneous-repositioning-of-dislodged-atrial-pacemaker-lead-0376743>

.be

Involving cutting or separating only

- Division (8)
- Release (N)



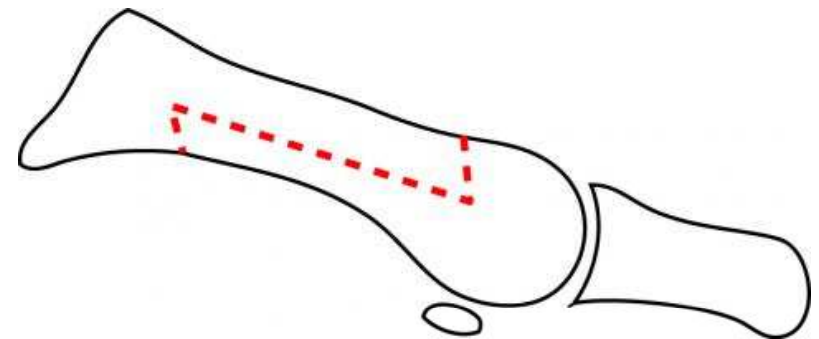
Involving cutting or separating only: Division (8)

Cutting into/ separating

Within a Body Part

W/o taking out any of the Body Part or draining fluids and/or gases

All or a portion of the Body Part is separated/ transecting into 2 or more portions



<http://www.boneandjoint.org.uk/content/focus/rheumatoid-forefoot>

Osteotomy



Involving cutting or separating only: Release (N)

Release (Adhesiolysis)\Small intestine

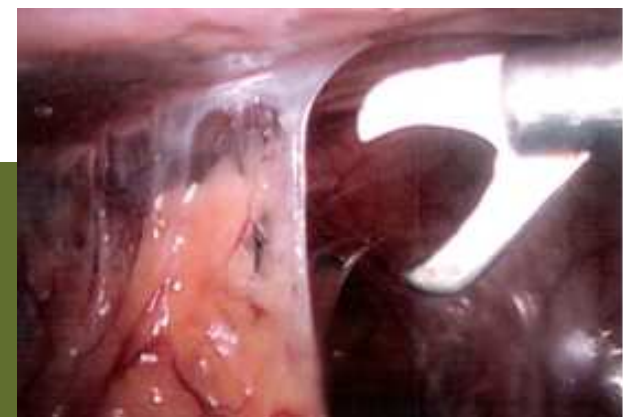
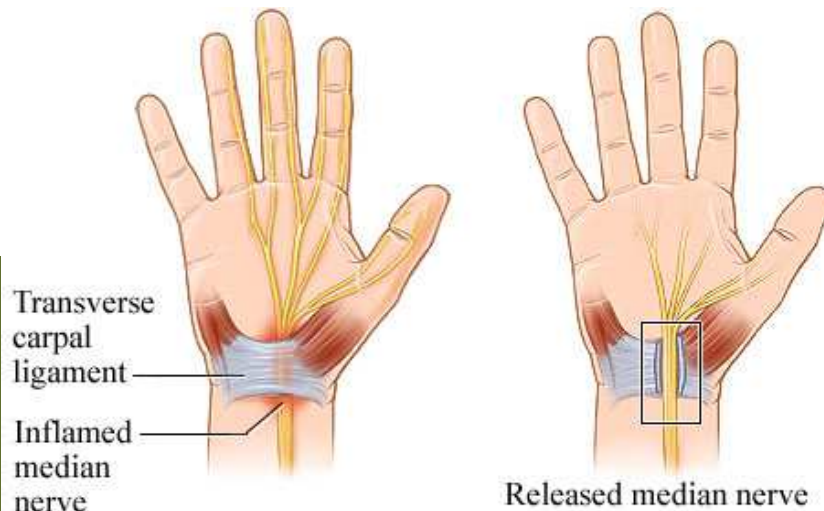
Freeing, by cutting or by using of force

Around a Body Part

Eliminating abnormal constraint without taking out any of the Body Part
Some of the restraining tissue may be taken out, but none of the Body Part is taken out



<http://www.lapscope.com/adhesions.htm>



(Carpal tunnel) Release\ Median nerve
(Guideline B13.3)

Other repairs

- Control (3)
- Repair (Q)

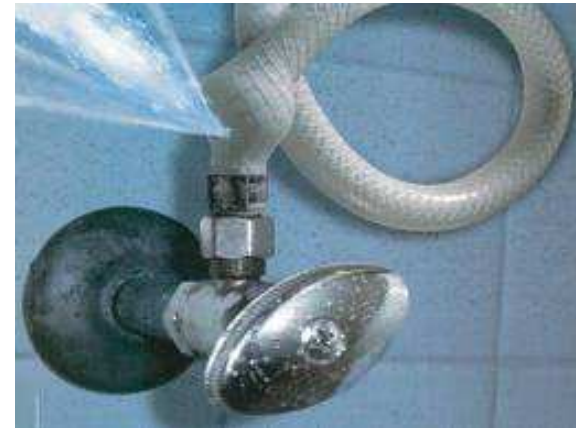


Other repairs: Control (3)

Stopping or attempting to stop

Postprocedural bleeding (incl. irrigation or evacuation of a hematoma at the operative site)

#4 = **Anatomic region, General/Extremity** and not specific Body Part

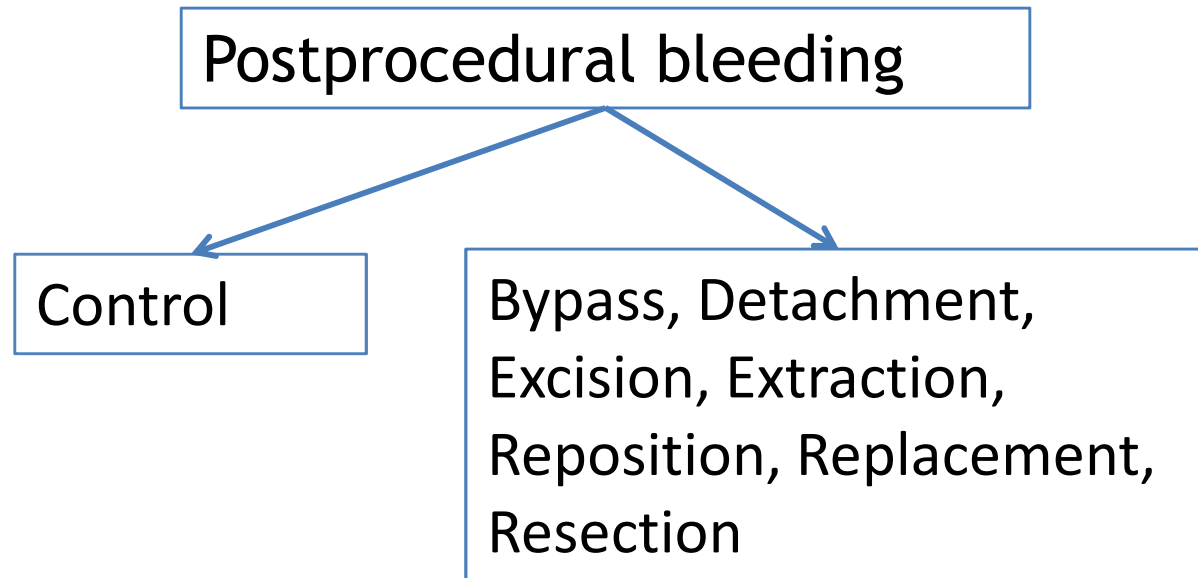


e.g. Post-prostatectomy hemorrhage,
post-tonsillectomy hemorrhage



Control vs. more definitive operation

(Guideline B3.7)



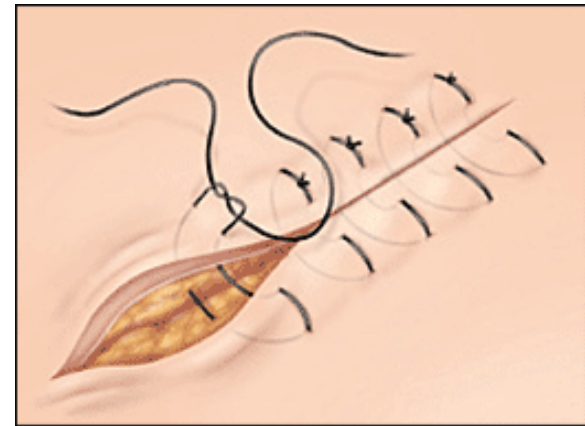
e.g. Resection spleen to stop postprocedural bleeding

53 Other repairs: Repair NEC (Q)

Restoring NEC

A Body Part to its natural anatomic structure and function

To the extent possible



Suture laceration



Procedures that define (other) objectives

- Alteration (0)
- Creation (4)
- Fusion (G)



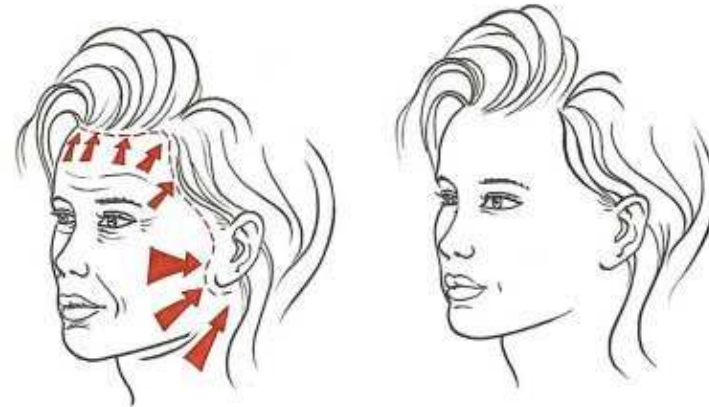
Objective: Alteration (0)

Modifying

Natural anatomical structure of a Body Part

W/o affecting function of a Body Part

Principal purpose is to improve appearance



<http://www.patricktheunis.be/facelift.html>



56

Objective: Creation (4)

Making

New genital structure

Does not physically take over the function of a Body Part, used only for sex change operations



.be

Objective: Fusion (G)

Unification and immobilization

Joint

Stabilization of damaged joints by bone grafts, fixation Device or other means



www.centerforartificialdiscreplacement.com

Spinal fusion



Sub-categories of procedures

- **Take out** some/all of a Body Part (n=5)
- **Put in/ put back or move** some/all of a Body Part (n=4)
- **Take out or eliminate solid matters, fluids or gases** from a Body Part (n=3)
- Involve only **examination** of Body Parts and Regions (n=2)
- **Alter the diameter/route** of a tubular Body Part (n=4)
- Always involve **Devices** (n=6)
- Involve **cutting or separation only** (n=2)
- **Other repairs** (n=2)
- **Define objectives** (n=3)



Section 0: #3 Root operations (Kernprocedures) (n=31)

0	Alteration	8	Division	J	Inspection	S	Reposition
1	Bypass	9	Drainage	K	Map	T	Resection
2	Change DVC	B	Excision	L	Occlusion	V	Restriction
3	Control	C	Extirpation	M	Reattachment	W	Revision DVC
4	Creation	D	Extraction	N	Release	U	Supplement DVC
5	Destruction	F	Fragmentation	P	Removal DVC	X	Transfer
6	Detachment	G	Fusion	Q	Repair NEC	Y	Transplantation
7	Dilation	H	Insertion DVC	R	Replacement DVC		



Anastomosis and *Incision* are not Root Procedures

- *Anastomosis* is always part of another Root Procedure e.g. Bypass, Resection
- *Incision* is always part of another Root Procedure e.g. Division, Drainage



Common Suffixes -> Root Operations

Conversion Table

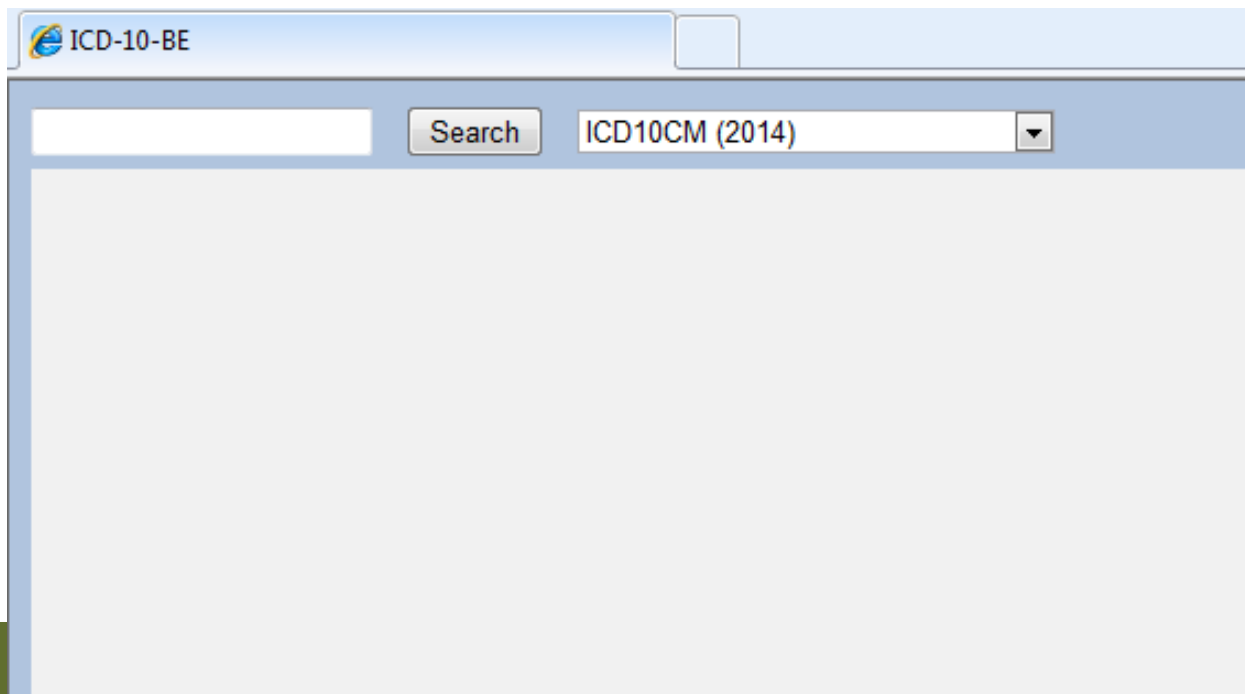
-centesis	Drainage	9
-desis	Fusion	G
-ectomy	Excision	B
	Resection	T
-exeresis	Extraction	D
-lysis	Release	N
-oscopy	Inspection	J
-otomy	Division	8
	Drainage	9

Common Suffixes -> Root Operations Conversion Table

-pexy	Repair	Q
	Reposition	S
-plasty	Repair	Q
	Replacement DVC	R
	Supplement DVC	U
-plication	Restriction	V
-rraphy	Repair	Q
-stasis	Control	3
-tripsy	Fragmentation	F

ICD-10-BE

- <http://icd10be.health.belgium.be/>



Common Procedural Term: Lobectomy R upper lobe

lobec

Search

Lobectomy

Lobectomy

see Excision, Central Nervous System 00B

see Excision, Respiratory System 0BB

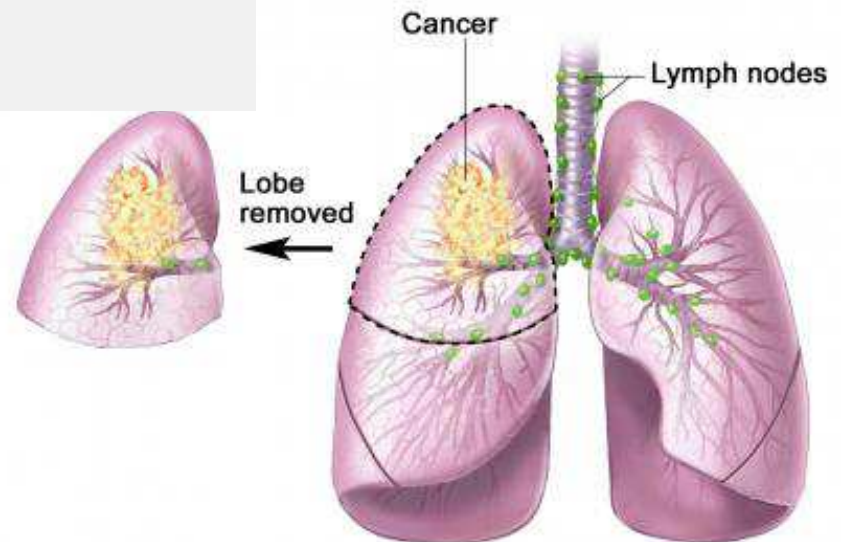
see **Resection, Respiratory System 0BT**

see Excision, Hepatobiliary System and Pancreas 0FB

see Resection, Hepatobiliary System and Pancreas 0FT

see Excision, Endocrine System 0GB

see Resection, Endocrine System 0GT



<i>Section</i>	0 Medical and Surgical		
<i>Body System</i>	B Respiratory System		
<i>Operation</i>	T Resection: Cutting out or off, without replacement, all of a body part		
<i>Code Description</i>	Respiratory System, Resection		
<i>Body Part (Clear)</i>	<i>Approach (Clear)</i>	<i>Device</i>	<i>Qualifier</i>
<input type="radio"/> 1 Trachea <input type="radio"/> 2 Carina <input type="radio"/> 3 Main Bronchus, Right <input type="radio"/> 4 Upper Lobe Bronchus, Right <input type="radio"/> 5 Middle Lobe Bronchus, Right <input type="radio"/> 6 Lower Lobe Bronchus, Right <input type="radio"/> 7 Main Bronchus, Left <input type="radio"/> 8 Upper Lobe Bronchus, Left <input type="radio"/> 9 Lingula Bronchus <input type="radio"/> B Lower Lobe Bronchus, Left <input type="radio"/> C Upper Lung Lobe, Right <input type="radio"/> D Middle Lung Lobe, Right <input type="radio"/> F Lower Lung Lobe, Right <input type="radio"/> G Upper Lung Lobe, Left <input type="radio"/> H Lung Lingula <input type="radio"/> J Lower Lung Lobe, Left <input type="radio"/> K Lung, Right <input type="radio"/> L Lung, Left <input type="radio"/> M Lungs, Bilateral <input type="radio"/> R Diaphragm, Right <input type="radio"/> S Diaphragm, Left	<input type="radio"/> 0 Open <input type="radio"/> 4 Percutaneous Endoscopic	<input checked="" type="radio"/> Z No Device	<input checked="" type="radio"/> Z No Qualifier



Root Procedures General Guidelines

- Components of a procedure specified in the Root Operation definition/ explanation are not coded separately (Guideline B3.1b)



Root Procedures General Guidelines

- Procedural steps necessary to reach and close the operative site are not coded separately (Guideline B3.1b)



Multiple Coding

- Multiple Root Operations - same Body Part (Guideline B3.2c)
- e.g. Destruction Sigmoid lesion and Bypass Sigmoid Colon



Multiple Coding - Conversion (Guideline B3.2d)

Laparoscopic cholecystectomy
to open approach

Percutaneous
endoscopic Inspection

+

Open Resection

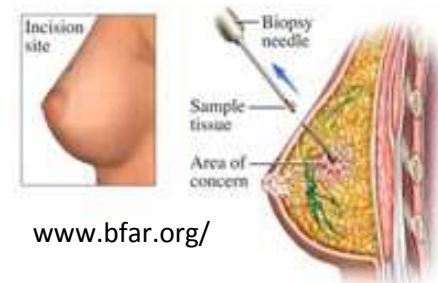


Multiple coding (Guideline B3.4)

Diagnostic
Excision, Extraction,
Drainage - Biopsy -
#7=X



Definitive procedure
Destruction, Excision,
Resection

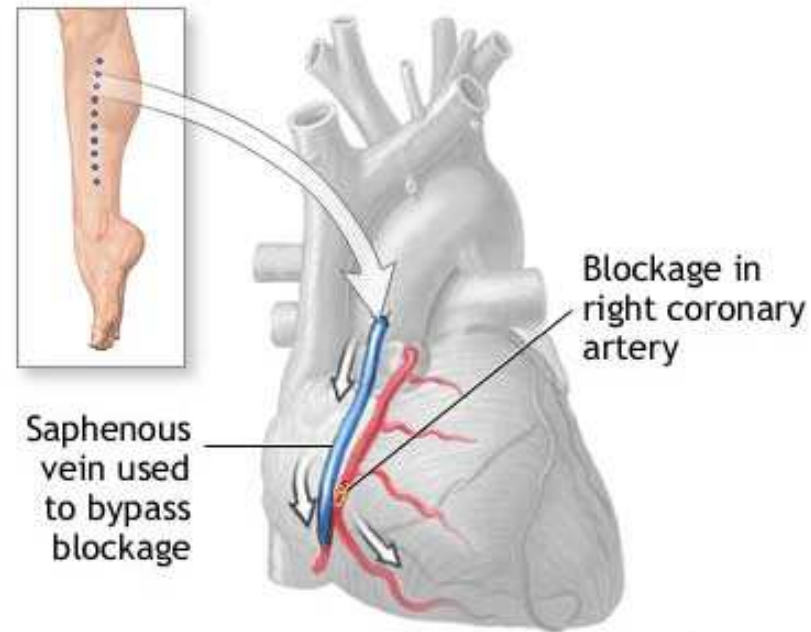


www.arizona-breast-cancer-specialists.com



Multiple coding - Excision autografts

(Guideline B3.9)



ADAM

.be

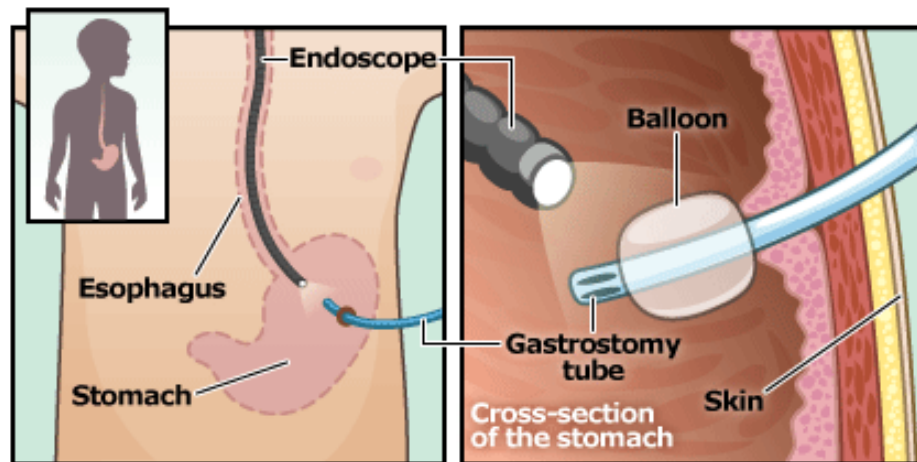


72

Multiple coding (Guideline B3.11c)

1 Body part - same episode:

- Inspection - one approach and
- Another procedure - another approach

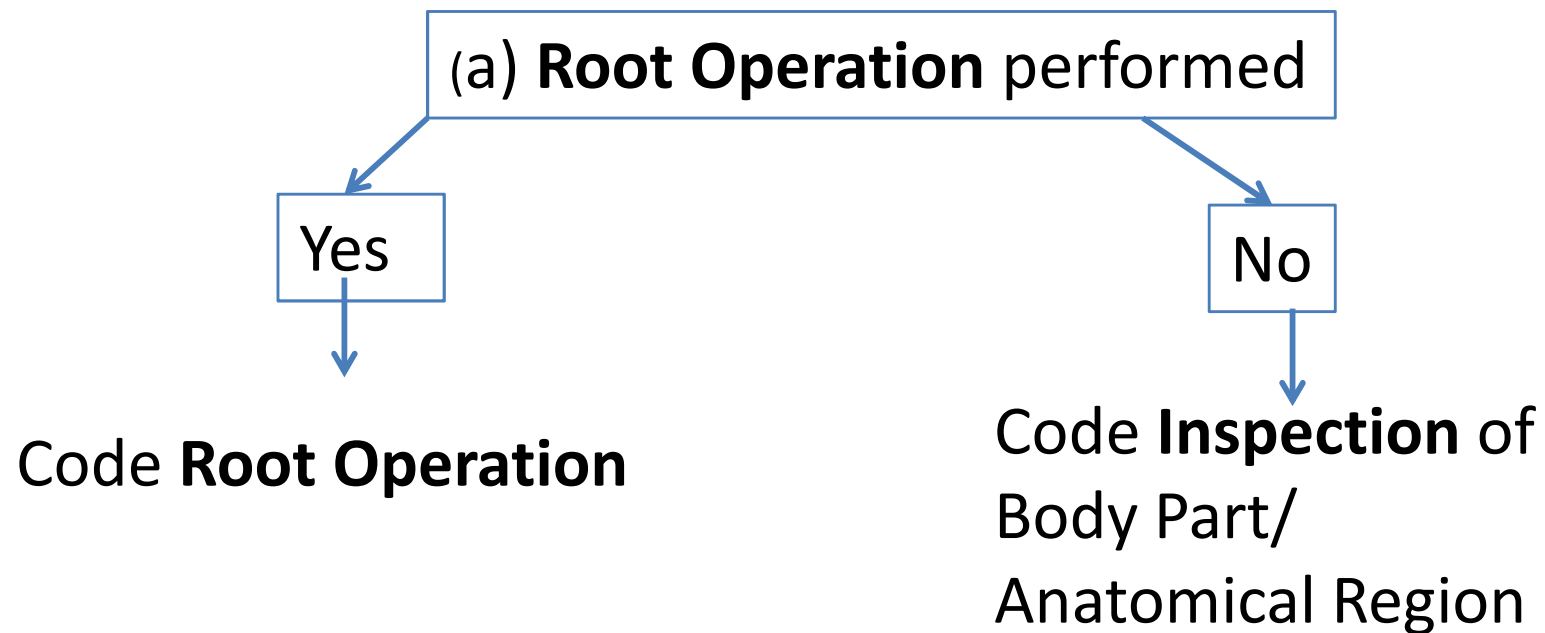


PEG Procedure <http://health.allrefer.com>



.be

Discontinued procedures (Guideline B3.3)



Section 0: #4 Body Part

- Specific Part of #2 the Body System on which the procedure was performed e.g.
 - #2=D Body System: Gastro-Intestinal
 - #4=9 Body Part: Duodenum
- Body System upper -> Body Part upper/lower (Guideline B2.1b)



75 Code to the highest specificity

lobe ICD10CM (2014) ▼

Section 0 Medical and Surgical
Body System B Respiratory System
Operation T Resection: Cutting out or off, without replacement, all of a body part

Code Description Respiratory System, Resection

<i>Body Part</i> <input type="button" value="Clear"/>	<i>Approach</i> <input type="button" value="Clear"/>	<i>Device</i>	<i>Qualifier</i>
<input type="radio"/> 1 Trachea			
<input type="radio"/> 2 Carina			
<input type="radio"/> 3 Main Bronchus, Right			
<input type="radio"/> 4 Upper Lobe Bronchus, Right			
<input type="radio"/> 5 Middle Lobe Bronchus, Right			
<input type="radio"/> 6 Lower Lobe Bronchus, Right			
<input type="radio"/> 7 Main Bronchus, Left			
<input type="radio"/> 8 Upper Lobe Bronchus, Left			
<input type="radio"/> 9 Lingula Bronchus			
<input type="radio"/> B Lower Lobe Bronchus, Left			
<input checked="" type="radio"/> C Upper Lung Lobe, Right	<input type="radio"/> 0 Open	<input checked="" type="radio"/> Z No Device	<input checked="" type="radio"/> Z No Qualifier
<input type="radio"/> D Middle Lung Lobe, Right	<input type="radio"/> 4 Percutaneous Endoscopic		
<input type="radio"/> F Lower Lung Lobe, Right			
<input type="radio"/> G Upper Lung Lobe, Left			
<input type="radio"/> H Lung Lingula			
<input type="radio"/> J Lower Lung Lobe, Left			
<input type="radio"/> K Lung, Right			

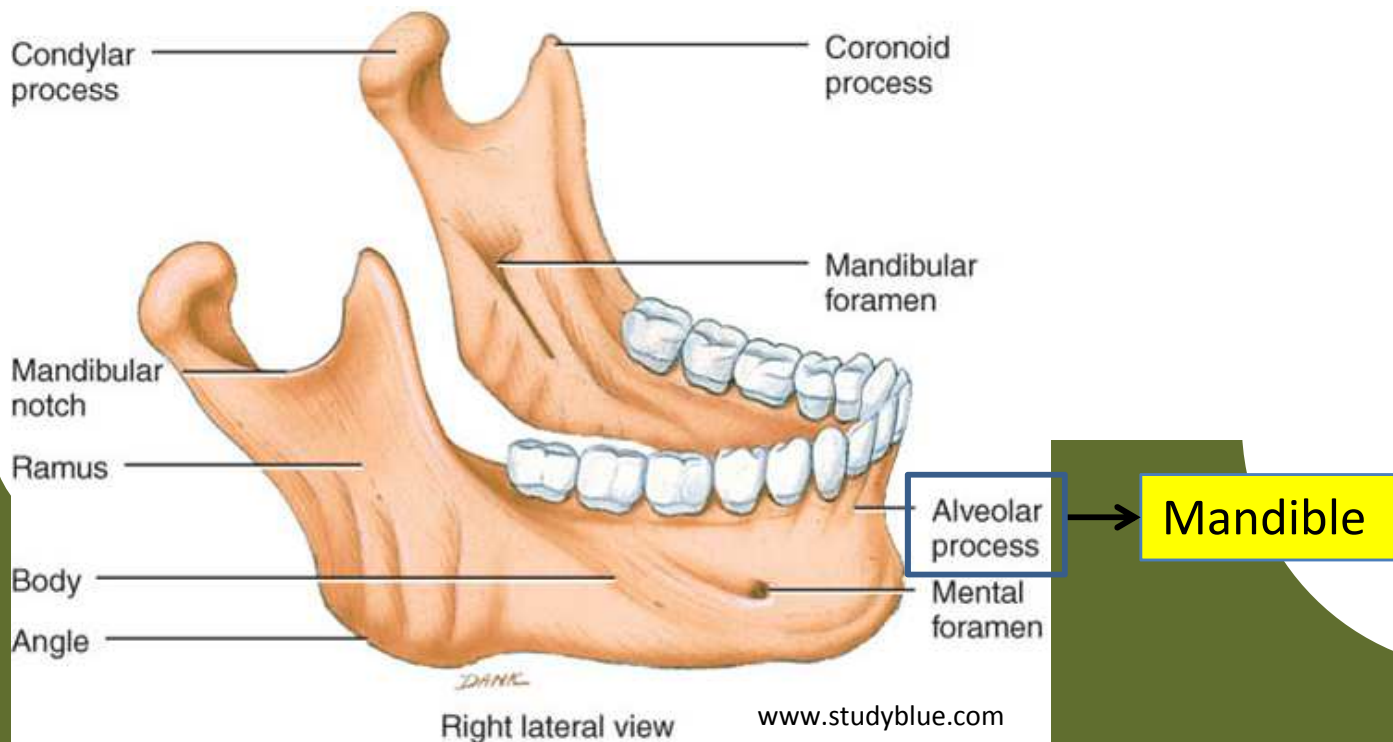
Resection RUL >>> Excision R lung (Guideline B3.8)



A procedure performed on a body site without separate Body Part value

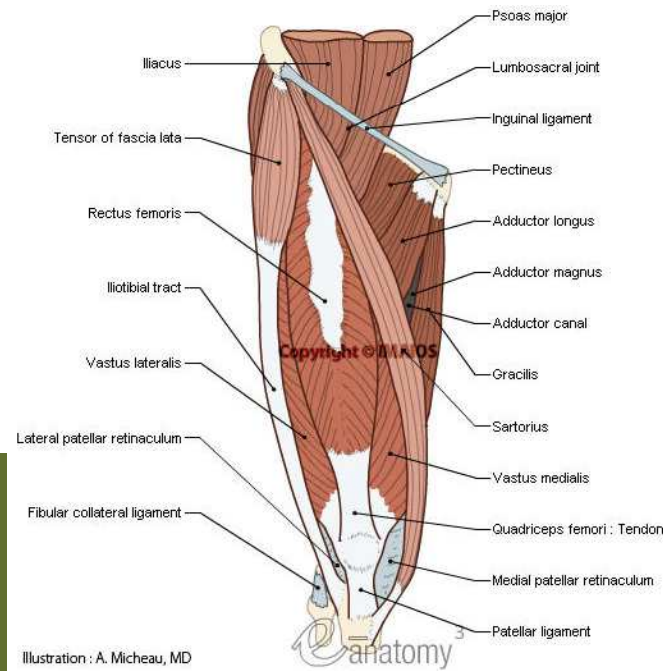
(Guideline B4.1a)

Code the whole Body Part



Multiple coding (Guideline B3.2b)

- 1 Root Operation - different sites - 1 Body Part
- e.g. Excision Right Sartorius and Right Gracilis muscle -> Body Part Right Upper Leg



Anatomical terms - PCS description

Conversions

Abdominal aortic plexus	Abdominale sympatric nerve
Abdominal esophagus	Esophagus, lower
Abductor hallucis muscle	Foot muscle R/L
Abductor hallucis tendon	Foot tendon R/L
Accessory cephalic vein	Cephalic vein R/L
Accessory obturator nerve	Lumbar plexus

ICD-10-BE

aortic plexus

Search

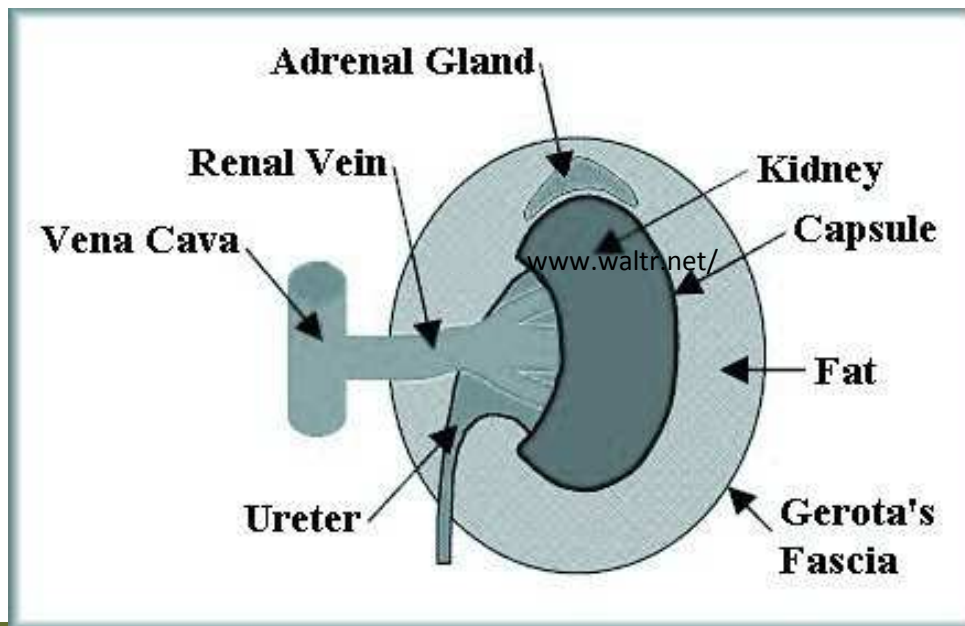
ICD10CM (2014)

Abdominal aortic plexus *use* Nerve, Abdominal Sympathetic



79 “Peri” -> Body Part (Guideline B4.1b)

- Perirenal procedure -> Body Part: Renal

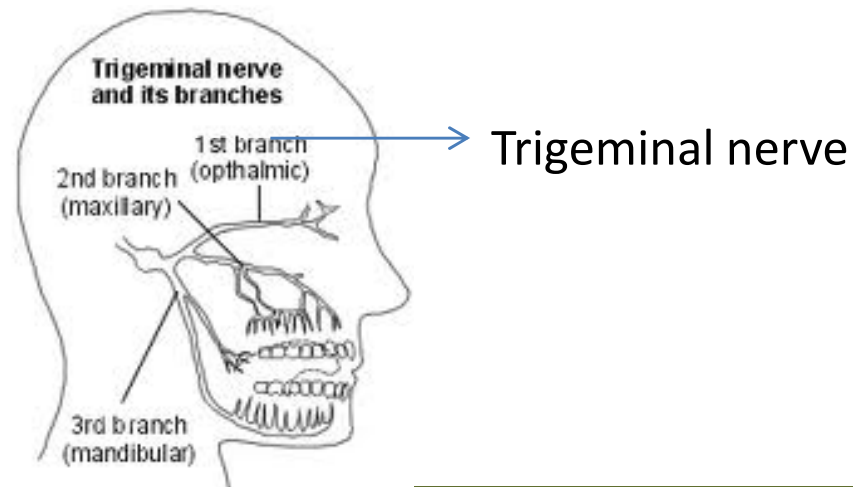


Branch of a Body Part without specific value



(Guideline B4.2)

Closest proximal Body Part value



Bilateral Body Parts value (Guideline B4.3)

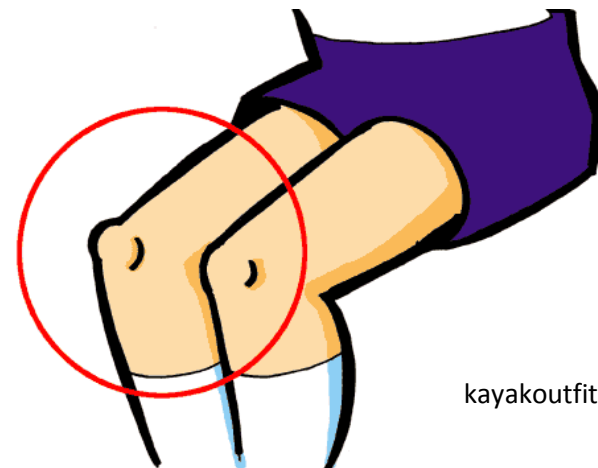
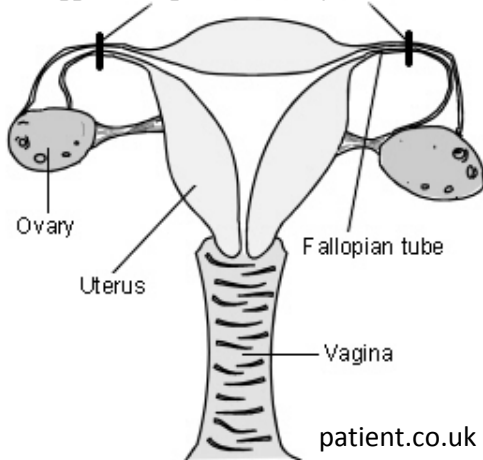
Yes

1 code

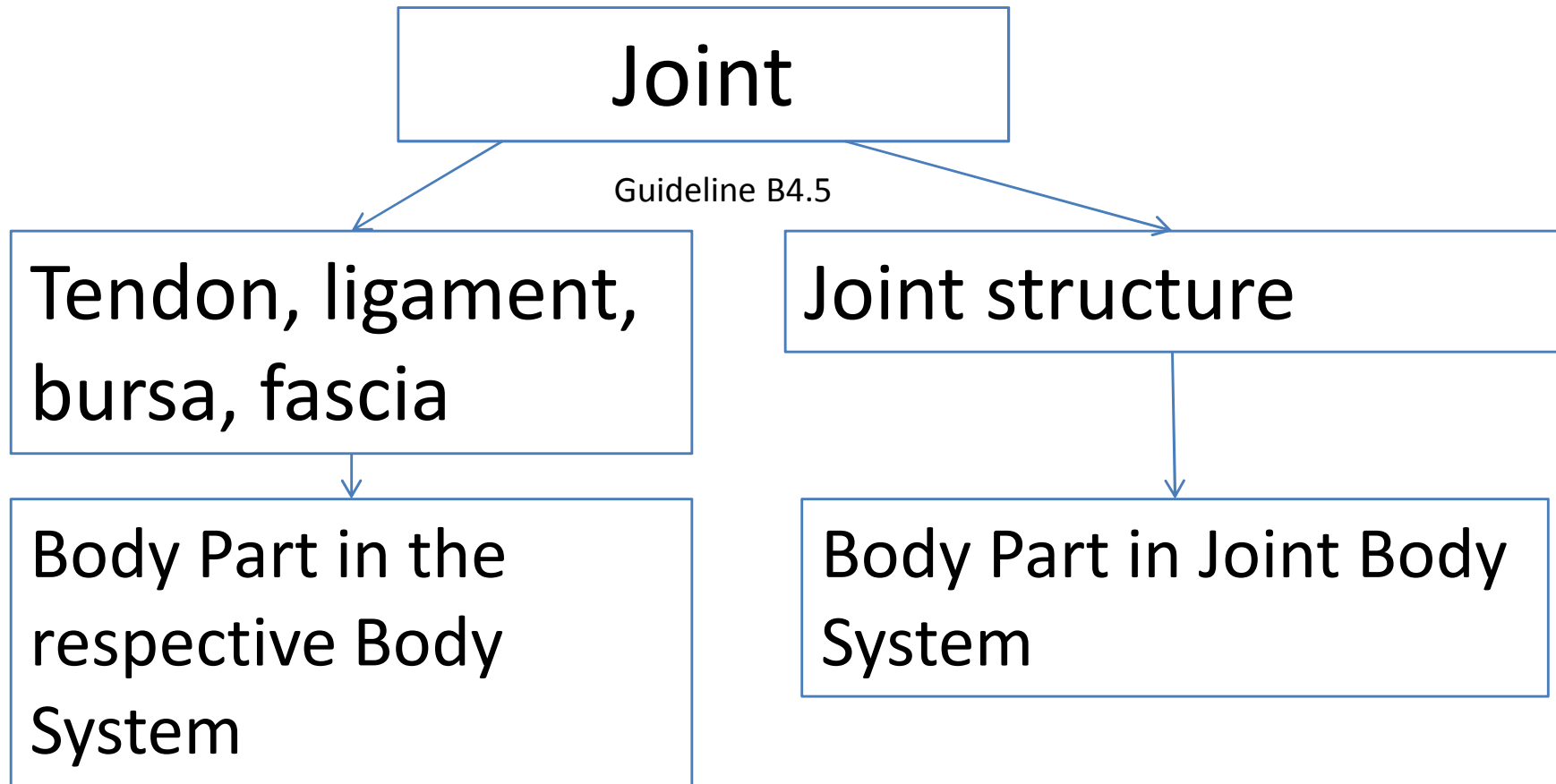
No

2 codes

Fallopian tubes are cut or blocked to stop the egg travelling from the ovary to the uterus



.be



e.g. ant. cruciate ligament repair -> BS Bursae & ligaments/BP Knee bursae & ligaments

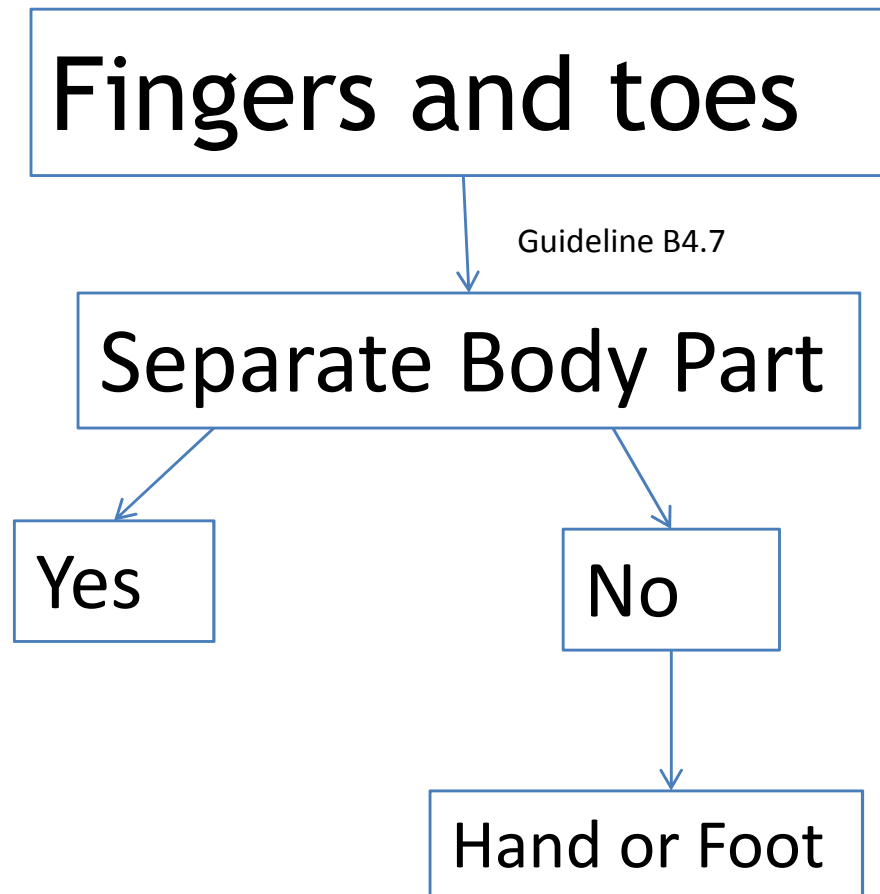
e.g. arthroscopic shaving articular cartilage -> BS Lower Joints /BP Knee joint



Skin, subcutaneous tissue and fascia overlying a joint (Guideline B4.6)

- Shoulder -> Upper Arm
- Elbow -> Lower Arm
- Wrist -> Lower Arm
- Hip -> Upper Leg
- Knee -> Lower Leg
- Ankle -> Foot



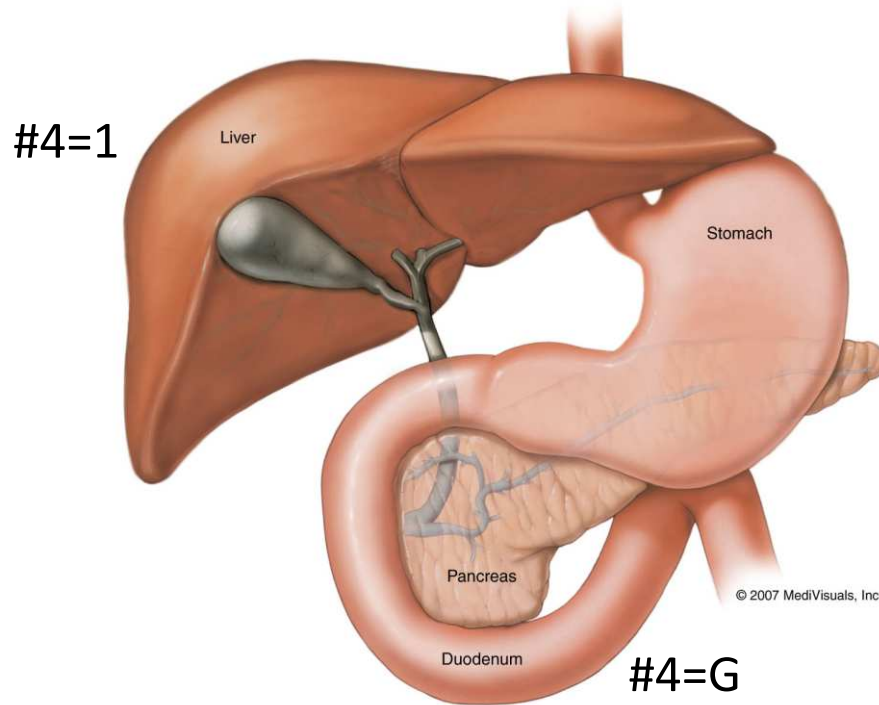


85

Multiple Coding (Guideline B3.2a)

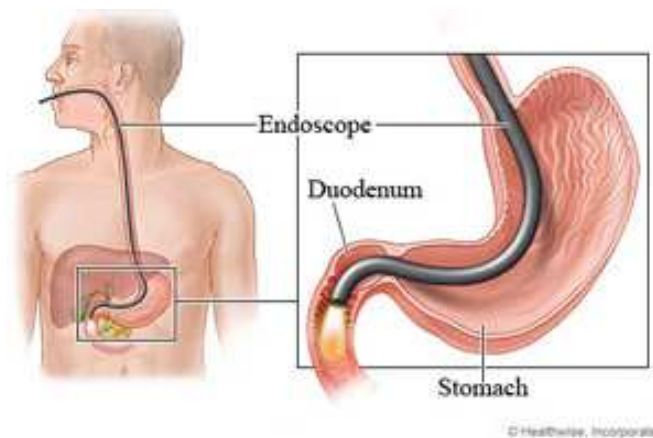
- 1 Root Operation - different Body Parts
- e.g. Liver and Pancreas Biopsy

Ductal Anatomy of Liver and Pancreas



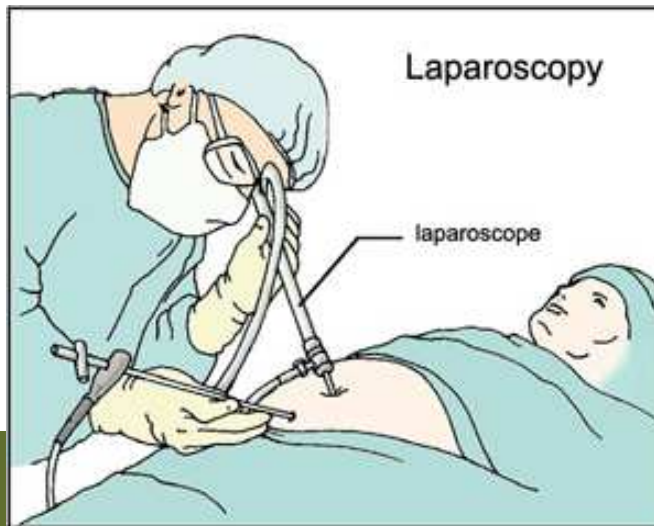
.be

If multiple tubular Body Parts are inspected the most distal tubular Body Part is coded (Guideline B3.11b)



If in the Body System General Anatomical Regions multiple non-tubular Body Parts are inspected, the Body Part that specifies the **entire area** is coded (Guideline B3.11b)

- e.g. Laparoscopic examination abdominal contents -> M&S/General Anatomical Regions/Inspection/Peritoneal Cavity



88 Body Part - Spine Fusion (Guideline B3.10a)



<i>Code</i>	0RG Upper Joints, Fusion
<i>Description</i>	
<i>Body Part</i>	<input type="button" value="Clear"/>
	<i>App</i>
<input type="radio"/>	0 Occipital-cervical Joint
<input type="radio"/>	1 Cervical Vertebral Joint
<input checked="" type="radio"/>	2 Cervical Vertebral Joints, 2 or more
<input type="radio"/>	4 Cervicothoracic Vertebral Joint
<input type="radio"/>	6 Thoracic Vertebral Joint
<input type="radio"/>	7 Thoracic Vertebral Joints, 2 to 7
<input type="radio"/>	8 Thoracic Vertebral Joints, 8 or more
<input type="radio"/>	A Thoracolumbar Vertebral Joint



Overlapping body layers (Guideline B3.5)

- If the Root Operations Excision, Repair or Inspection are performed on overlapping layers of the Musculoskeletal System, the Body Part specifying the deepest layer is coded
- e.g. Excisional debridement Skin, Subcutaneous tissue and Muscle -> Excisional debridement Muscle



Section 0: #5 Approach (n=7)

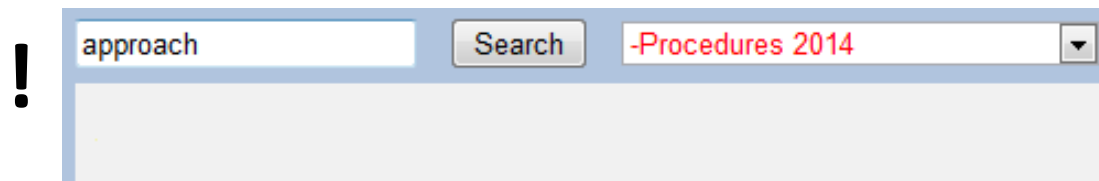
Value	Approach
X	External
0	Open
3	Percutaneous
4	Percutaneous endoscopic
7	Via natural or artificial opening
8	Via natural or artificial opening endoscopic
F	Via natural or artificial opening with percutaneous endoscopic assistance

Section 0: #5 Approach

Location

Method

Instrumentation

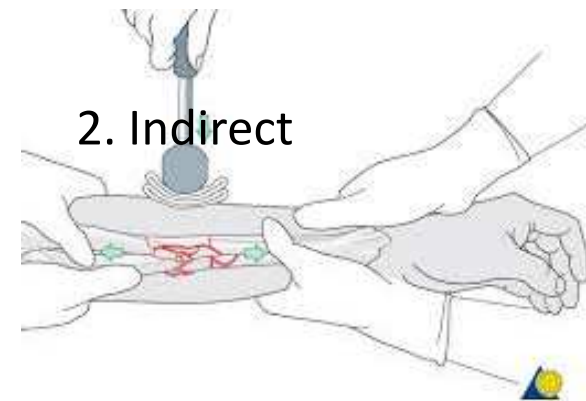
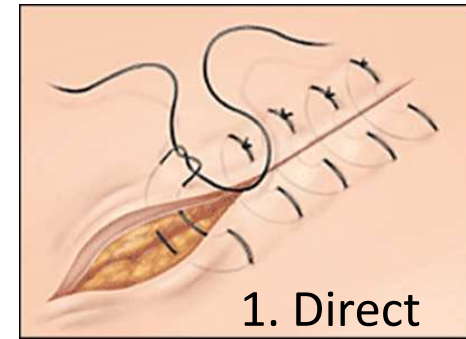


Approach - External (X)

Skin or mucous membrane

- Direct application on
- Indirect force through

None

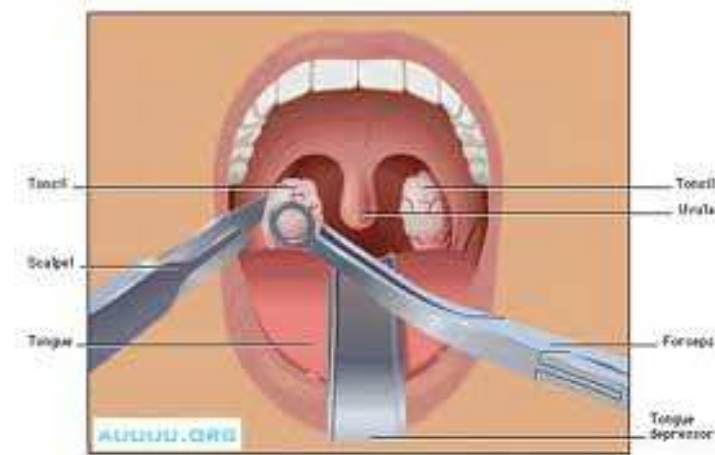


Closed fracture
reduction



Approach - External (X)

- Procedures performed within an orifice on structures that are visible without the aid of any instrumentation are coded to approach External



www.entcenterslc.com



Approach - Internal Body Part

1. Acces location

- 1.1 Skin and mucous membranes
- 1.2 External orifices
 - 1.2.1 Natural (e.g. mouth)
 - 1.2.2 Artificial (e.g. colostomy stoma)

2. Method

- 2.1 Open → cutting
- 2.2 Instrumentation → puncture-incision (+/- external orifice)

3. Instrumentation

Specialized equipment +/- endoscope (≠ Device!)

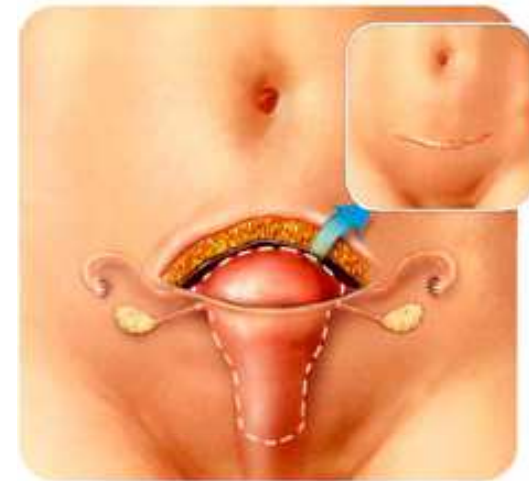


95 Approach - Open (0)

Skin or mucous membrane
and any other body layers

Cutting

None



<http://glgacenter.com/hysterectomy.php#>

Abdominal hysterectomy



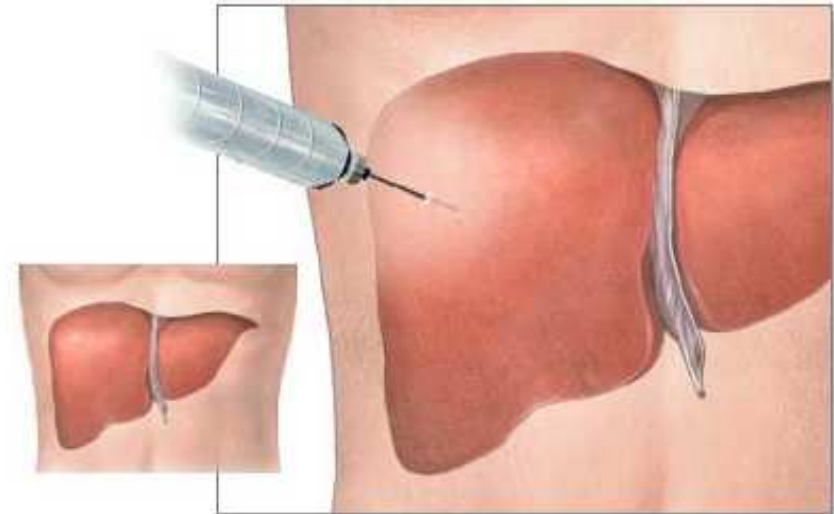
.be

96 Approach - Percutaneous (3)

Skin or mucous membranes,
and/or any other body layers

Puncture or minor incision

w/o visualization



© 2007 The New York Times Co

Needle biopsy of liver



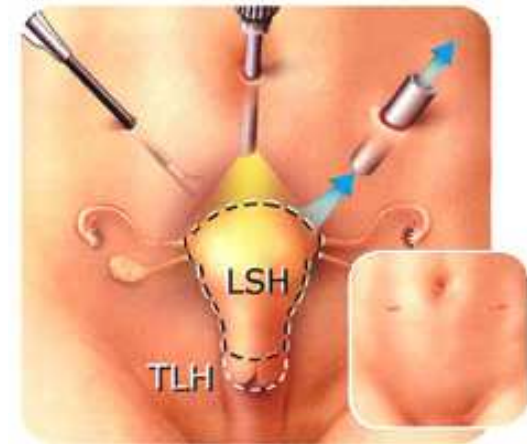
.be

Approach - Percutaneous Endoscopic (4)

Skin or mucous membrane,
any other body layers

Puncture or incision

With visualization



<http://glgacenter.com/hysterectomy.php#>

Laparoscopic hysterectomy



Approach - Via natural or artificial opening endoscopic with percutaneous endoscopic assistance (F)

Entry of instrumentation through a natural or artificial external opening and entry, by puncture or minor incision, of instrumentation through the skin or mucous membrane and any other body layers necessary to aid in the performance of the procedure

Skin or mucous membrane, any other body layers

Cutting

With visualization



<http://glgacenter.com/hysterectomy.php#>

Laparoscopically assisted vaginal hysterectomy



Approach - Via natural or artificial opening (7)

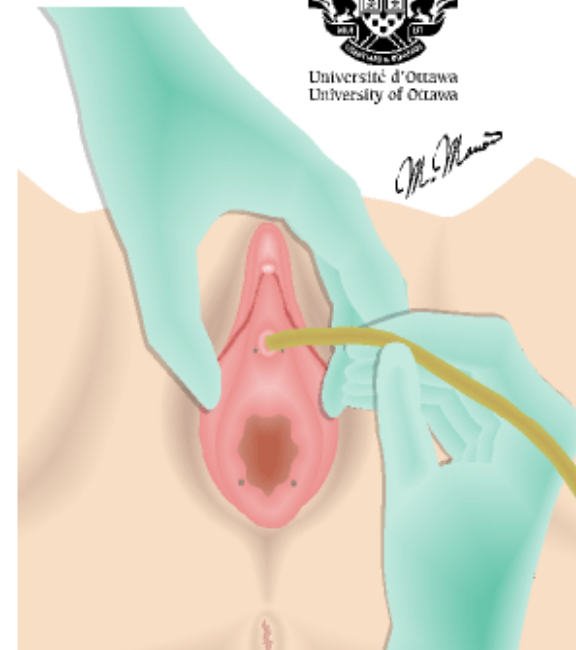
Natural or artificial opening

Direct entry

W/o visualization



Université d'Ottawa
University of Ottawa



.be

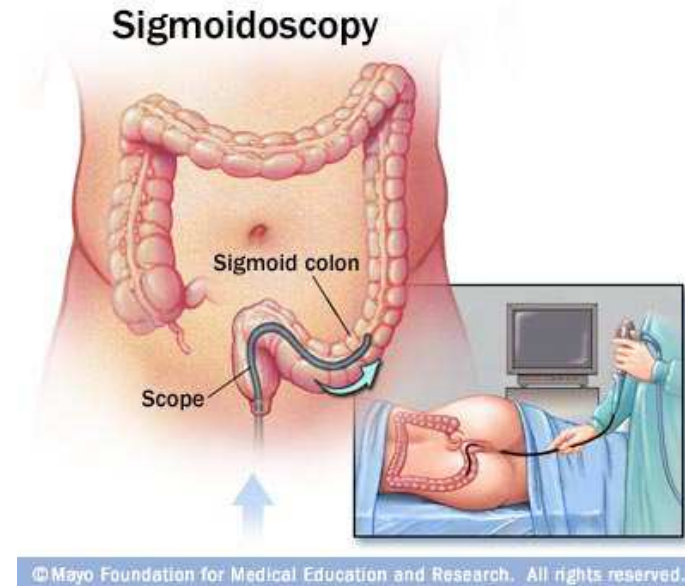
Approach - via natural or artificial opening endoscopic (8)

Entry of instrumentation through a natural or artificial opening to reach and visualize the site of the procedure

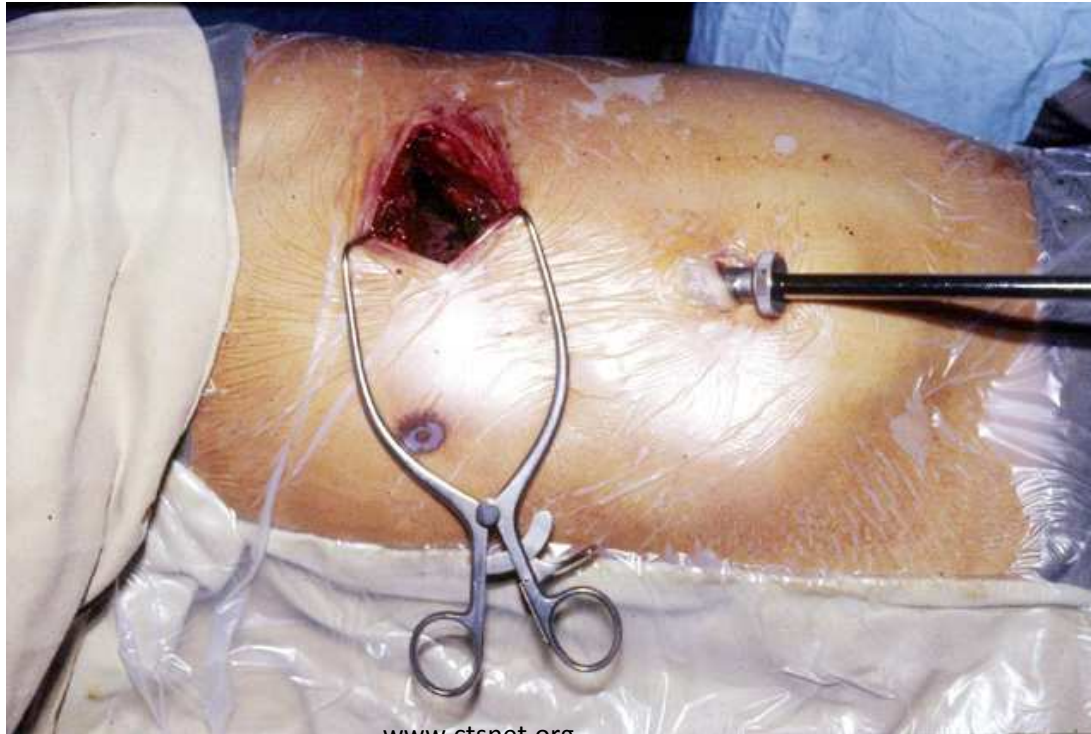
Natural or artificial opening

Direct entry with puncture or minor incision for instrumentation only

With visualization



Laparoscopic assisted open surgery = 'Open' Approach



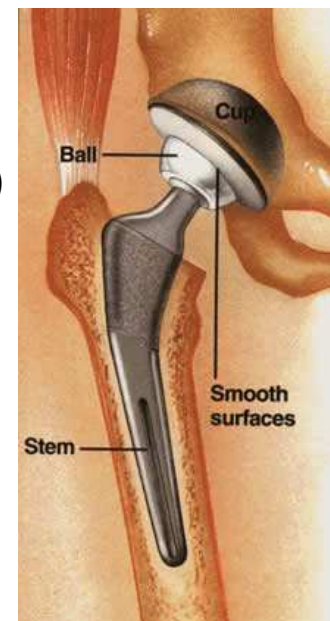
www.ctsnet.org



Section 0: #6 Device (x = 1->34 values)

(Guideline A3)

- **DVC remains in place after the procedure is completed**
(Guideline B6,1a):
 - Grafts and prostheses
 - Implants
 - Simple or mechanical appliances
 - Electronic appliances
- ≠ clips, ligatures, sutures, drains (Guideline B6,1b)
- ≠ instruments to visualize the procedure site



Official Device Key

AbioCor™ Total Replacement Heart	Synthetic Substitute
Acellular Hydrated Dermis	Nonautologous Tissue Substitute
ACUITY™ Steerable lead	Cardiac lead in heart and great vessels
AMPLATZER® Muscular VSD Occluder	Synthetic Substitute
AMS 800® Urinary Control System	Artificial Sphincter in Urinary System
AneuRx® AAA Advantage®	Intraluminal Device

AbioCor® Total Replacement Heart



Remember: Root Procedures that always involve Devices (#6)

- Insertion (H)
- Replacement (R)
- Supplement (U)
- Removal (P)
- Change (2)
- Revision (W)



Other Root Procedures **may** involve Devices

Procedure performed on a Device and not on a Body Part (Guideline B6.1c)

- Administration \ndwelling Device (C)/**Irrigation (1)**
- Removal (P)
- Change (2)
- Revision (W)

e.g. Irrigation percutaneous nephrostomy tube



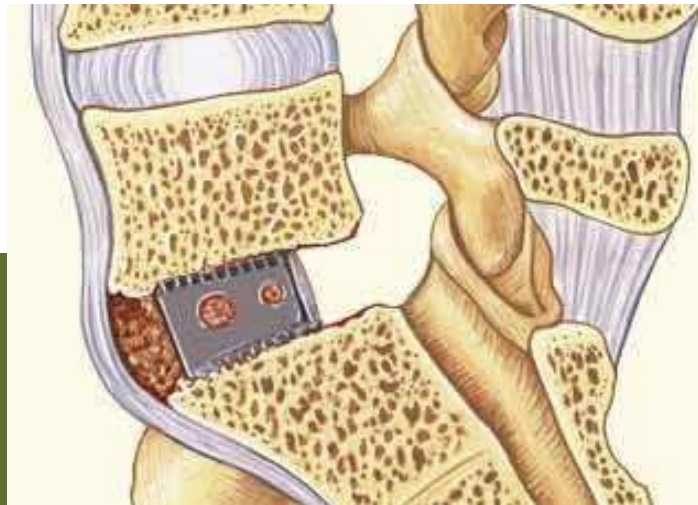
(Drainage) Device (Guideline B6.2)

- Put in a drainage Device:
 - Root Operation #3 Drainage (9)
 - Device value #6 Drainage Device



Spinal Fusion - combinations Devices/ Materials on same joint (Guideline B3.10c)

- Interbody Fusion Device (+ other material e.g. bone graft)
-> Interbody Fusion Device
- Bone graft only -> (Non)Autologous Tissue Substitute
- Autologous and Nonautologous bone graft -> Autologous Tissue Substitute

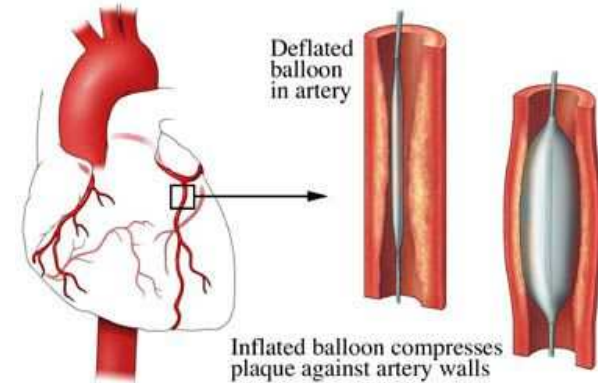


www.precisionspine.com



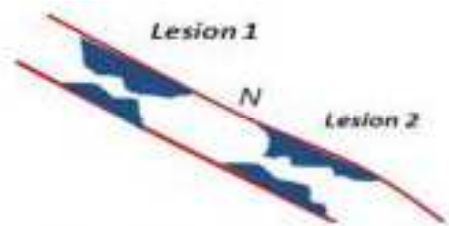
Multiple coding - coronary tandem lesions - Dilation

(Guideline B4.4)

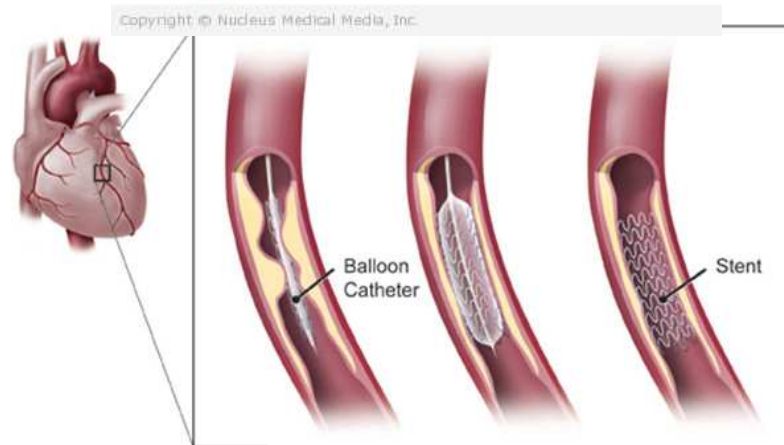


Coronary, one site, no Device

Coronary, two sites



<http://drsvenkatesan.wordpress.com/>



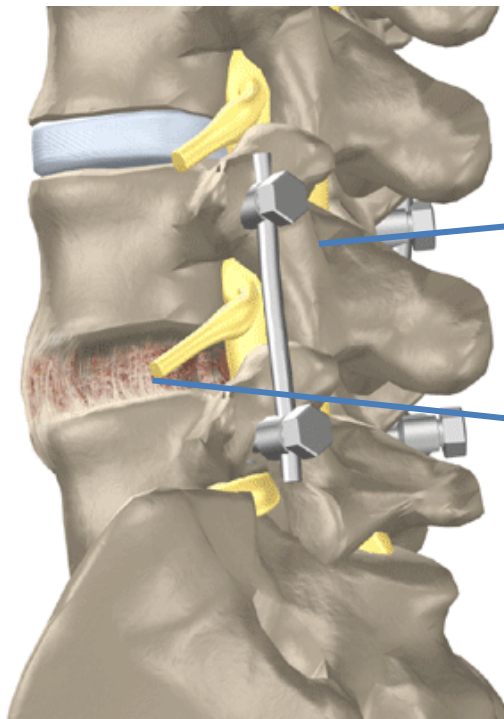
drliminghaan.com

Coronary, one site, Intra-luminal Device



Multiple coding - different Devices

spinal Fusion (Guideline B3.10b)



Internal Fixation Device

Bone graft = (non)autologous
Tissue Substitute



spinalstenosis.org

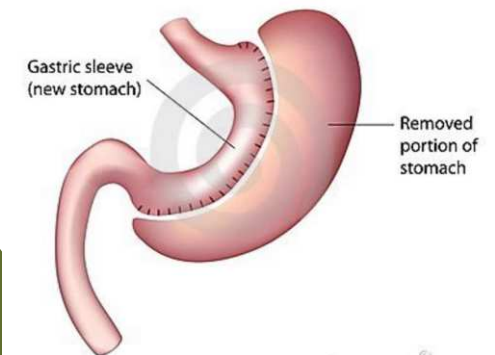


Section 0: #7 Qualifier

Has a specific meaning for each Root Operation

- Destination of (peripheral) Bypass (Guideline B3.6a)
- Origin of (coronary) Bypass (Guideline B3.6a)
- Cemented/ uncemented joint Replacement
- *Diagnostic (X)* in Extraction, Excision, Drainage *biopsies*
- *Vertical* in Vertical sleeve gastrectomy

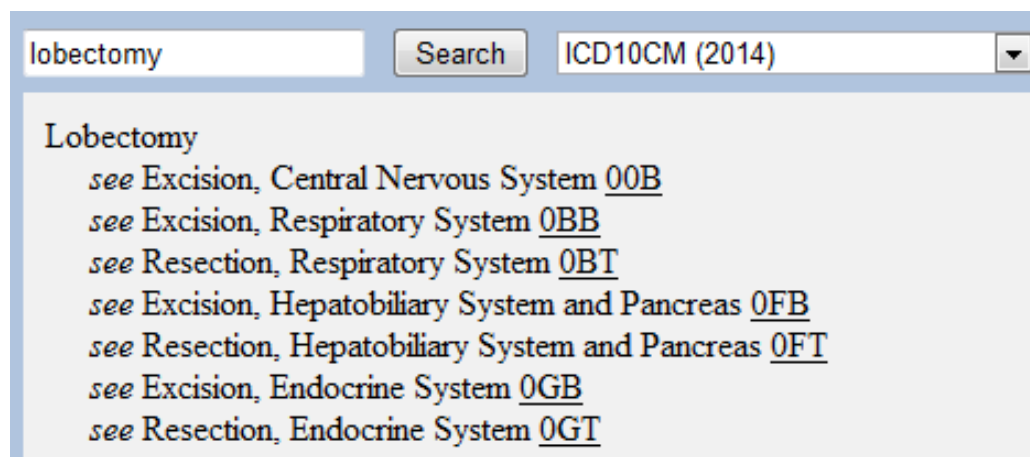
Vertical Sleeve Gastrectomy



Section 0: #7 Qualifier - diagnostic (X)

<i>Section</i>	0 Medical and Surgical		
<i>Body System</i>	B Respiratory System		
<i>Operation</i>	9 Drainage: Taking or letting out fluids and/or gases from a body part		
<i>Code</i>	Drainage of Left Pleura, Percutaneous Approach, Diagnostic		
<i>Description</i>			
<ul style="list-style-type: none"> <input type="radio"/> B Lower Lobe Bronchus, Left <input type="radio"/> C Upper Lung Lobe, Right <input type="radio"/> D Middle Lung Lobe, Right <input type="radio"/> F Lower Lung Lobe, Right <input type="radio"/> G Upper Lung Lobe, Left <input type="radio"/> H Lung Lingula <input type="radio"/> J Lower Lung Lobe, Left <input type="radio"/> K Lung, Right <input type="radio"/> L Lung, Left <input type="radio"/> M Lungs, Bilateral <input type="radio"/> N Pleura, Right <input checked="" type="radio"/> P Pleura, Left <input type="radio"/> R Diaphragm, Right 	<ul style="list-style-type: none"> <input type="radio"/> 0 Open <input checked="" type="radio"/> 3 Percutaneous <input type="radio"/> 4 Percutaneous Endoscopic <input type="radio"/> 7 Via Natural or Artificial Opening <input type="radio"/> 8 Via Natural or Artificial Opening Endoscopic 	<ul style="list-style-type: none"> <input type="radio"/> 0 Drainage Device <input checked="" type="radio"/> Z No Device 	<ul style="list-style-type: none"> <input checked="" type="radio"/> X Diagnostic <input type="radio"/> Z No Qualifier

ICD-10-BE zoom



Normal

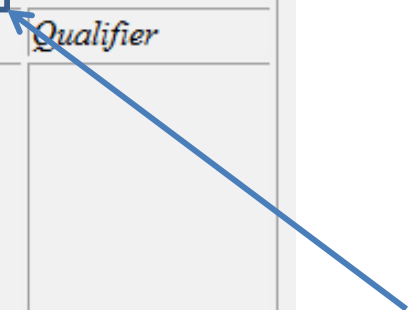
Lobectomy

see Excision, Central Nervous System 00B
see Excision, Respiratory System 0BB
see Resection, Respiratory System 0BT
see Excision, Hepatobiliary System and Pancreas 0FB
see Resection, Hepatobiliary System and Pancreas 0FT
see Excision, Endocrine System 0GB
see Resection, Endocrine System 0GT

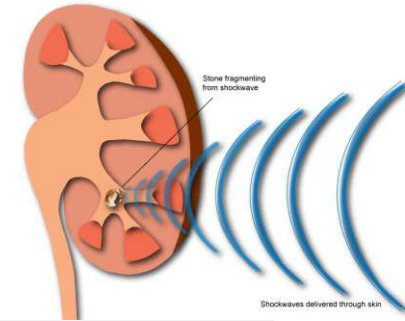
Extra-large/ 125%



<i>Section</i>	0 Medical and Surgical		
<i>Body System</i>	B Respiratory System		
<i>Operation</i>	T Resection: Cutting out or off, without replacement, all of a body part		
<i>Code Description</i>	Resection of Right Upper Lung Lobe, Open Approach		
<i>Body Part (Clear)</i>	<i>Approach (Clear)</i>	<i>Device</i>	<i>Qualifier</i>
<input type="radio"/> 1 Trachea <input type="radio"/> 2 Carina <input type="radio"/> 3 Main Bronchus, Right <input type="radio"/> 4 Upper Lobe Bronchus, Right <input type="radio"/> 5 Middle Lobe Bronchus, Right <input type="radio"/> 6 Lower Lobe Bronchus, Right <input type="radio"/> 7 Main Bronchus, Left <input type="radio"/> 8 Upper Lobe Bronchus, Left <input type="radio"/> 9 Lingula Bronchus <input type="radio"/> B Lower Lobe Bronchus, Left <input checked="" type="radio"/> C Upper Lung Lobe, Right <input type="radio"/> D Middle Lung Lobe, Right <input type="radio"/> F Lower Lung Lobe, Right <input type="radio"/> G Upper Lung Lobe, Left <input type="radio"/> H Lung Lingula <input type="radio"/> J Lower Lung Lobe, Left <input type="radio"/> K Lung, Right <input type="radio"/> L Lung, Left <input type="radio"/> M Lungs, Bilateral <input type="radio"/> R Diaphragm, Right <input type="radio"/> S Diaphragm, Left	<input checked="" type="radio"/> 0 Open <input type="radio"/> 4 Percutaneous Endoscopic	<input checked="" type="radio"/> Z No Device	<input checked="" type="radio"/> Z No Qualifier



Example ICD-10-BE lithotripsy



lithotripsy

Lithotripsy
see Fragmentation
 with removal of fragments see Extirpation

Fragmentation

- Ampulla of Vater 0FFC[03478X]ZZ
- Anus 0DFQ[03478X]ZZ
- Appendix 0DFJ[03478X]ZZ
- Bladder 0TFB[03478X]ZZ

Code **0TF4XZZ** **Fragmentation in Left Kidney Pelvis, External Approach**
Description

<i>Body Part</i> <input type="button" value="Clear"/>	<i>Approach</i> <input type="button" value="Clear"/>	<i>Device</i>	<i>Qualifier</i>
<input type="radio"/> 3 Kidney Pelvis, Right <input checked="" type="radio"/> 4 Kidney Pelvis, Left <input type="radio"/> 6 Ureter, Right <input type="radio"/> 7 Ureter, Left <input type="radio"/> B Bladder <input type="radio"/> C Bladder Neck <input type="radio"/> D Urethra	<input type="radio"/> 0 Open <input type="radio"/> 3 Percutaneous <input type="radio"/> 4 Percutaneous Endoscopic <input type="radio"/> 7 Via Natural or Artificial Opening <input type="radio"/> 8 Via Natural or Artificial Opening Endoscopic <input checked="" type="radio"/> X External	<input checked="" type="radio"/> Z No Device	<input checked="" type="radio"/> Z No Qualifier

The coder's responsibility (Guideline A11)

- Many of the terms used to construct PCS codes are defined within the system
- It is the coder's responsibility to determine what the documentation in the medical record equates to in the PCS definitions
- The physician is not expected to use the terms used in PCS code description
- The coder is not required to query the physician when the correlation between the documentation and the defined PCS terms is clear

- e.g “partial resection” = “Excision”



The physician's responsibility (Guideline A8)

If the documentation is incomplete, the physician should be queried



1 table - x rows (Guideline A9)

Ø Medical and Surgical F Hepatobiliary System and Pancreas B Excision Cutting out or off, without replacement, a portion of a body part			
Body Part Character 4	Approach Character 5	Device Character 6	Qualifier Character 7
Ø Liver 1 Liver, Right Lobe 2 Liver, Left Lobe 4 Gallbladder G Pancreas	Ø Open 3 Percutaneous 4 Percutaneous Endoscopic	Z No Device	X Diagnostic Z No Qualifier
5 Hepatic Duct, Right 6 Hepatic Duct, Left 8 Cystic Duct 9 Common Bile Duct C Ampulla of Vater D Pancreatic Duct F Pancreatic Duct, Accessory	Ø Open 3 Percutaneous 4 Percutaneous Endoscopic 7 Via Natural or Artificial Opening 8 Via Natural or Artificial Opening Endoscopic	Z No Device	X Diagnostic Z No Qualifier



1 table - 1 row - “fade to gray”

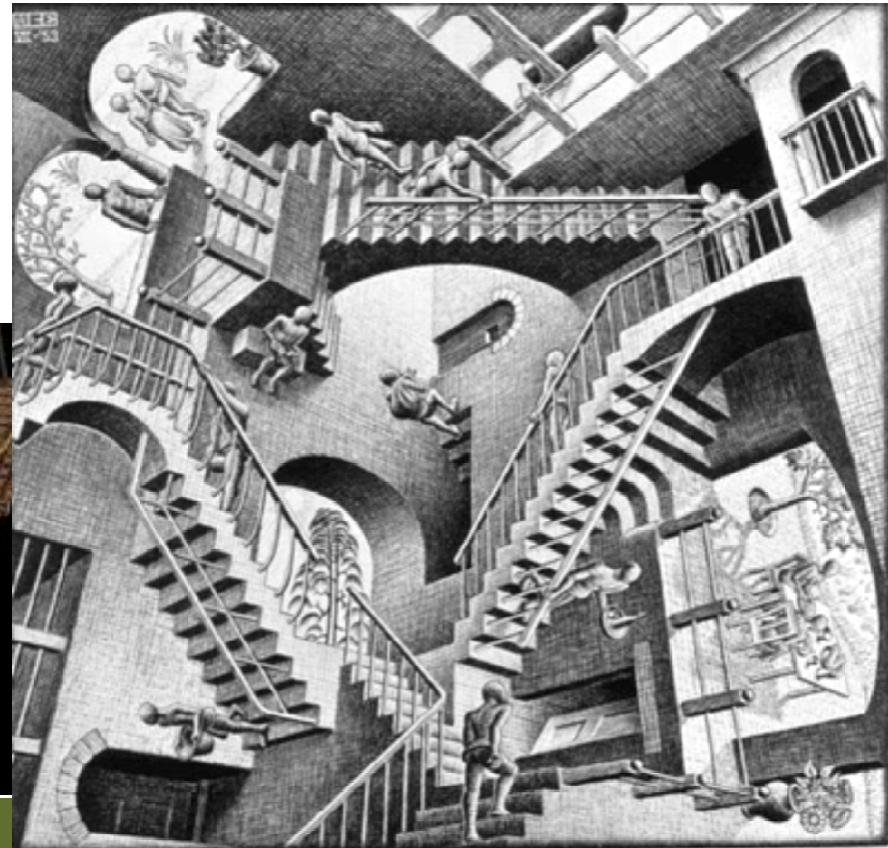
<i>Section</i>	0 Medical and Surgical		
<i>Body System</i>	F Hepatobiliary System and Pancreas		
<i>Operation</i>	B Excision: Cutting out or off, without replacement, a portion of a body part		
<i>Code</i>	0FB Hepatobiliary System and Pancreas, Excision		
<i>Description</i>			
<i>Body Part</i> <input type="button" value="Clear"/>	<i>Approach</i> <input type="button" value="Clear"/>	<i>Device</i>	<i>Qualifier</i> <input type="button" value="Clear"/>
<input type="radio"/> 0 Liver <input checked="" type="radio"/> 1 Liver, Right Lobe <input type="radio"/> 2 Liver, Left Lobe <input type="radio"/> 4 Gallbladder <input type="radio"/> 5 Hepatic Duct, Right <input type="radio"/> 6 Hepatic Duct, Left <input type="radio"/> 8 Cystic Duct <input type="radio"/> 9 Common Bile Duct <input type="radio"/> C Ampulla of Vater <input type="radio"/> D Pancreatic Duct <input type="radio"/> F Pancreatic Duct, Accessory <input type="radio"/> G Pancreas	<input type="radio"/> 0 Open <input type="radio"/> 3 Percutaneous <input checked="" type="radio"/> 4 Percutaneous Endoscopic <input type="radio"/> 7 Via Natural or Artificial Opening <input type="radio"/> 8 Via Natural or Artificial Opening Endoscopic	<input checked="" type="radio"/> Z No Device	<input type="radio"/> X Diagnostic <input type="radio"/> Z No Qualifier

General Equivalence Mappings (GEM's) Crosswalks

ICD-9



<http://www.deviantart.com/>



www.fataldesignx.blogspot.be

ICD-10

General Equivalence Mappings (GEM's)

ICD-9-CM DIAGNOSIS CODES

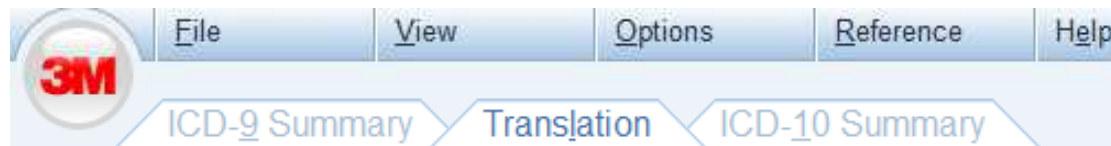
A 2181 Intramural leiomyoma of uterus

ICD-9-CM PROCEDURE CODES

6839 Unspecified subtotal abdominal hysterectomy

MORPHOLOGY CODES

M88950 Myoma



ICD-9-CM Diagnosis	ICD-10-CM Translation Options
2181 Intramural leiomyoma of uterus	D251 Intramural leiomyoma of uterus
ICD-9-CM Procedures	ICD-10-PCS Translation Options
6839 Unspecified subtotal abdominal hysterectomy	0UT90ZZ Resection of Uterus, Open Approach

Principal Diagnosis

D251 Intramural leiomyoma of uterus

Principal Procedure

0UT90ZZ Resection of Uterus, Open Approach

ICD-9-CM Diagnosis

43310 Occlusion and stenosis of carotid artery without cerebral infarction
121

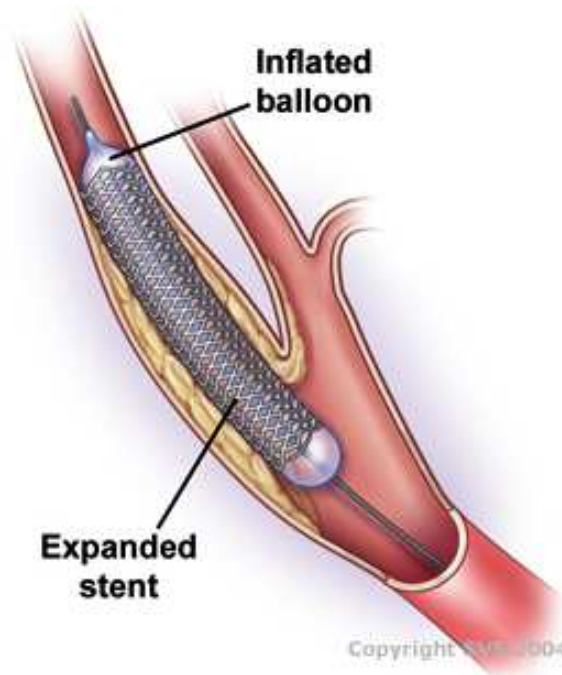


ICD-10-CM Translation Options

- [I6521](#) Occlusion and stenosis of right carotid artery
- [I6522](#) Occlusion and stenosis of left carotid artery
- [I6523](#) Occlusion and stenosis of bilateral carotid arteries
- [I6529](#) Occlusion and stenosis of unspecified carotid artery

ICD-9-CM Procedures

3979 Endovascular procedures on other vessels



ICD-10-PCS Translation Options

- [02LS3DZ](#) Occlusion of Right Pulmonary Vein with Intraluminal Device, Percutaneous Approach
- [02LS3ZZ](#) Occlusion of Right Pulmonary Vein, Percutaneous Approach
- [02LT3DZ](#) Occlusion of Left Pulmonary Vein with Intraluminal Device, Percutaneous Approach
- [02LT3ZZ](#) Occlusion of Left Pulmonary Vein, Percutaneous Approach
- [02VP3DZ](#) Restriction of Pulmonary Trunk with Intraluminal Device, Percutaneous Approach
- [02VP3ZZ](#) Restriction of Pulmonary Trunk, Percutaneous Approach
- [02VQ3DZ](#) Restriction of Right Pulmonary Artery with Intraluminal Device, Percutaneous Approach
- [02VQ3ZZ](#) Restriction of Right Pulmonary Artery, Percutaneous Approach
- [02VR3DT](#) Restriction of Ductus Arteriosus with Intraluminal Device, Percutaneous Approach
- [02VR3DZ](#) Restriction of Left Pulmonary Artery with Intraluminal Device, Percutaneous Approach

Section 1 Obstetrics

#2 Body System: Pregnancy



Section 1: #3 Root operations

Value	Root operation		
A	Abortion	J	Inspection
2	Change DVC	P	Removal DVC
E	Delivery	Q	Repair
9	Drainage	S	Reposition
D	Extraction	T	Resection
H	Insertion DVC	Y	Transplantation

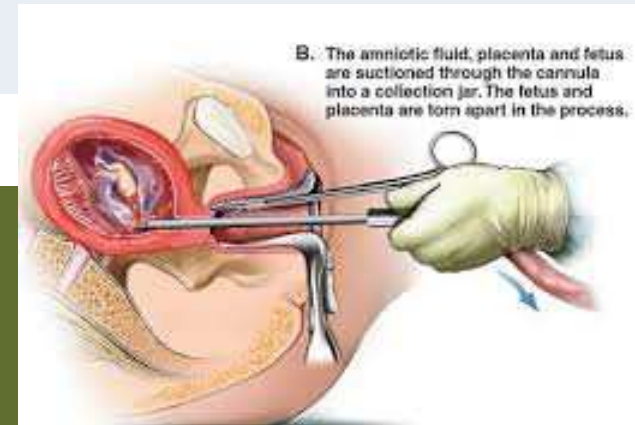


Spontaneous abortion -> Delivery
Cesarian = Extraction



Abortion (Abortus)(A)

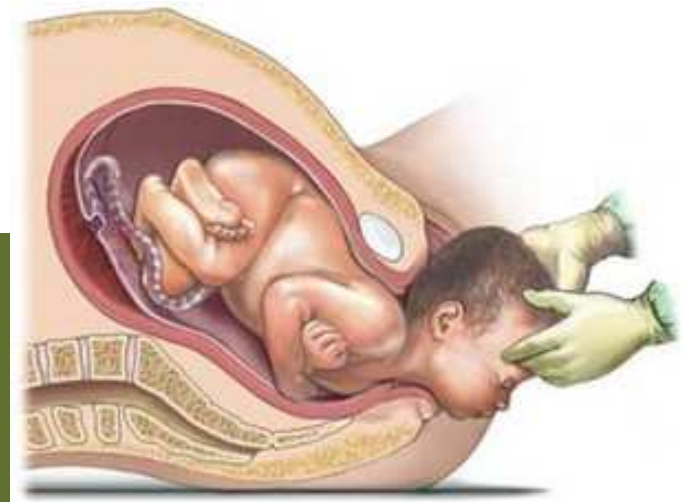
Definition	Artificially terminating a pregnancy
Explanation	Qualifier #7 <ul style="list-style-type: none"> • 6 Vacuum • W Laminaria • X Abortifacient • Z No qualifier
Example	Transvaginal abortion using vacuum aspiration technique



<http://www.abort73.com>

Delivery (E)

Definition	Assisting the passage of the Products of Conception from the genital tract
Explanation	Applies only to manually-assisted, vaginal delivery
Example	Manually-assisted delivery



<http://www.goodparenting.in>



Section 1: #4 Body Part (Guideline C1)

0	Products of Conception
1	Products of Conception, retained
2	Products of Conception, ectopic

Products of Conception = all physical components of pregnancy, incl. fetus, amnion, umbilical cord and placenta, irrespective of gestational age



! Procedures on the pregnant female are coded in the Medical and Surgical section! (e.g. repair episiotomy/ urethral laceration)

Section 1: #7 Qualifier

- Type of Extraction (e.g. low/ high forceps, etc)
- Type of cesarean section (e.g. classical, low cervical, etc)
- Type of fluid taken out during Drainage procedure (e.g. amniotic fluid, fetal blood, etc)



Procedures following Delivery/ Abortion

(Guideline C2)

- Curettage endometrium/evacuation retained Products of Conception following Delivery/Abortion ->

Obstetrics/Extraction/Products of Conception, retained

- Diagnostic/therapeutic D&C at any other time ->

Medical and Surgical/Female Reproductive System/Extraction/Endometrium



Section 2 Placement (Plaatsing) of a Device in/on

#2 Body Systems:

W Anatomical Regions (e.g. Head, R Inguinal Region, Abdominal wall, etc)

Y Anatomical/ natural Orifices (e.g. Mouth and Pharynx, Ear, Urethra, etc)



Section 2: #3 Root Operations

Root Operation	#3	Definition
Change (Veranderen) DVC	0	
Compression	1	Putting pressure on a body region
Dressing	2	Putting material on a body region for protection
Immobilisation	3	Limiting or preventing motion of a body region
Packing	4	Putting material in a body region or orifice
Removal DVC	5	
Traction	6	Exerting a pulling force on a body region in a distal direction

Section 2: #4 (External) Body Regions

Anatomical Region	Root Operation	(External) Body Region
W	0 Change	0 Head
	1 Compression	1 Face
	2 Dressing	2 Neck
	3 Immobilization	3 Abdominal wall
	4 Packing	4 Chest wall
	5 Removal	5 Back
	6 Traction	6 Inguinal Region ../..



Section 2: #4 Body Regions

Anatomical Orifices	Root Operation	Body Region
Y	0 Change	0 Mouth and Pharynx
	4 Packing	1 Nasal
	5 Removal	2 Ear
		3 Anorectal
		4 Female Genital Tract
		5 Urethra



Section 2: #5 Approach

- Directly on the skin or mucous membrane
- Indirectly through skin or mucous membranes (e.g. traction)
- No puncture/ Incision

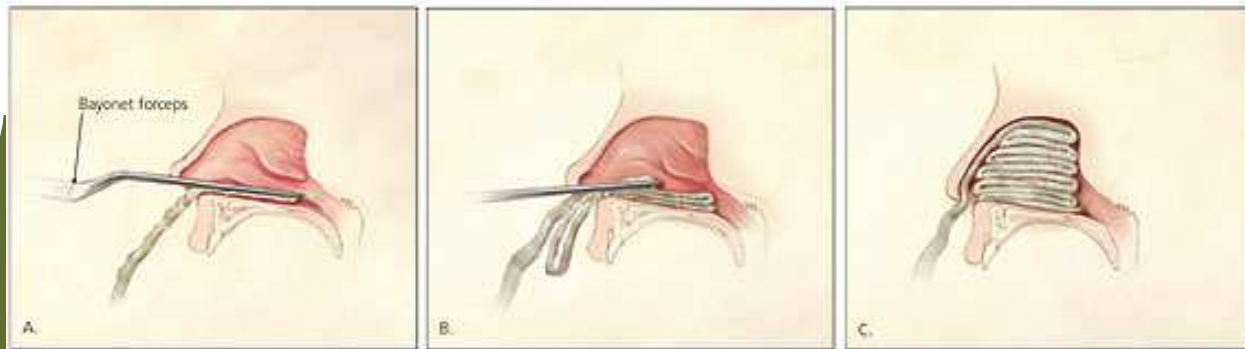
-> **X External**



Section 2: #6 Device



- **Anatomical regions:**
 - Cast for fractures and dislocations
 - (prefabricated/"off the shelf") material (e.g. splint, bandage, etc) excl. Extensive design, fabrication, fitting -> Section F Rehabilitation
- **Anatomical orifices:** Packing Material



Section 2 Placement (Plaatsing)

Change	Cast Change
Compression	Application compression dressing
Dressing	Application of dressing
Immobilization	Placemenent Stereotactic frame
Packing	Packing Inguinal Region
Removal	Removal stereotactic head frame
Traction	Cervical traction using a tractus apparatus



Section 3 Administration (of a Substance)

#2 Body System:

- Circulatory System (O)
- Indwelling **Device** (C)
- Physiological systems and Anatomical regions (E)



Section 3 Admin - #3 Root Operation

Root Operation	#	Definition
Physiological systems and Anatomical regions/ Introduction	0	Putting in or on a therapeutic, diagnostic, nutritional, physiological or prophylactic substance except blood or blood products
Indwelling Device or Physiological systems & Anatomical regions/ Irrigation	1	Putting in or on a cleansing substance
Circulatory System/ Transfusion	2	Putting in blood or blood products



Section 3 Admin\Physiological Systems and Anatomical Regions\Introduction-Irrigation

- **#4 Routes of administration** (n=33) e.g. Skin and mucous membranes , Subcutaneous tissue (SC), Muscle (IM), Peripheral Vein (IV), Muscle, Bone Marrow, etc
- **#5 Approach:** Intradermal, SC, IM, (intra-vascular) catheter -> External
- **#6 Substances** (n=31) e.g. Antineoplastic, Thrombolytic, Anti-infective, Anti-inflammatory, etc
- **# 7 Qualifier** e.g. type Antineoplastic

e.g. IV chemotherapy in peripheral vein, peritoneal dialysis via indwelling catheter

Section 3 Admin\Indwelling Device\Irrigation (Spoelen)

- #4 Body Part = None (Z)
- #6 Irrigating/cleansing substance (8)



Section 3 Admin/

#2 Circulatory System/

#3 Transfusion/

#4 Body Region = Route of Administration

Route of administration	
Peripheral Artery	Substance introduced locally but with systemic effect (e.g. chemotherapy)
Peripheral Vein	
Central Artery	Substance has a local effect (e.g. thrombolysis) or facilitates access for long-term systemic therapies to reduce stress on peripheral vasculature
Central Vein	
Products of Conception, circulatory	

Section 3 Admin/Circulatory System/Transfusion/Route of administration/ #6 Substance

- Blood products:
 - Stem cells
 - Bone Marrow
 - Serum Albumin
 - .../..

e.g. Transfusion of embryonic cells into central vein



Section 4 Measurement and Monitoring (Meting en Monitoren)

#2 Body Systems:

- Physiological Systems (A)
- Physiological Devices (B)



Sectie 4 / Physiological Systems and Physiological Devices/Root Procedures

Physiological Systems (A)	Measuring (1) Monitoring (2)
Physiological Devices (B)	Measuring (1)



Section 4 M&M: # 3 Root Operation

Root operation	#3	Definition
Measurement	0	Determining the level of a physiological or physical function at a point in time
Monitoring	1	Determining the level of a physiological or physical function over a period of time



Section 4 M&M/ Physiological Systems/ Measurement or Monitoring

- #4 Body Part: e.g. Central Nervous, Peripheral Nervous, Cardiac, Arterial, etc
- #6 **Function**: e.g. Flow, Output, Pressure, Saturation, Temperature
- #7 **Qualifier**: Function refinement e.g. R/L heart, central/peripheral



e.g. EKG, Holter monitoring



Section 4 M&M\Physiological Devices\Measurement

- #4 Body Part
 - 0 Central Nervous
 - 1 Peripheral Nervous
 - 2 Cardiac
 - 9 Respiratory
 - F Musculoskeletal
- #6 Device
 - S Pacemaker
 - T Defibrillator
 - V Stimulator



DVC left in place -> Section 0 - **Insertion**



Section 5 Extracorporeal

- Assistance
- Performance
- (Restoration)

#2= Physiological Body Systems (A)



Section 5 EC A&P: #2 Physiological Body System

- 2 Cardiac
- 5 Circulatory e.g. hemodialysis
- 9 Respiratory e.g. mechanical ventilation
- C Biliary
- D Urinary



Section 5 EC A&P: #3 Root Operations

Root Operation	#3	Definition
Assistance	0	Taking over a portion of a physiological function by extracorporeal means
Performance	1	Completely taking over a physiological function by extracorporeal means
Restoration	2	Returning or attempting to return, a physiological function to its original state by extracorporeal means



Section 5 EC A&P: #5 ~~Approach~~ Duration

- 0 Single
- 1 Intermittent
- 2 Continuous
- 3 <24 hrs
- 4 24-96 hrs
- 5 >96 hrs
- 6 Multiple



Section 5 EC A&P: #6 Function A'ed & P'ed

- 0 Filtration
- 1 Output
- 2 Oxygenation
- 3 Pacing
- 4 Rhythm
- 5 Ventilation (incl. Intubation)



Section 5 EC A&P:

#7 Qualifier = Equipment

- Balloon Pump
- Hyperbaric
- Manual
- Membrane
- ../..



Section 6 Extracorporeal Therapies

#2 Body System: Physiological Body Systems (A)



Section 6 ECΘ - #3 Root Operations

	#3	Extracorporeal -
Atmospheric Control	0	- control of atmospheric pressure
Decompression	1	- elimination of undissolved gas
Electromagnetic Θ	2	- treatment by electromagnetic rays
Hyperthermie	3	- raising of body T°
Hypothermia	4	- lowering of body T°
Pheresis	5	- separation of blood products
Phototherapy	6	- treatment by light rays
US Θ	7	- treatment by US
UV light therapy	8	- treatment by UV light
Shock wave therapy	9	- treatment by shock waves

Section 6 ECΘ:

#4 Body Systems Part

- 0 Skin
- 1 Urinary
- 2 Central Nervous
- 3 Musculoskeletal
- 5 Circulatory
- Z Multi-systemic or whole-body (cf. hypothermia)



Section 6 ECΘ:

- **#5 Approach Duration:**
 - 0 Single
 - 1 Multiple
- **#6 Qualifier Z**
- **#7 Qualifier:**
 - type of blood products separated in Pheresis procedure e.g. RBCs, WBCs, platelets, plasma, stem cells from cord blood, stem cells
 - specific blood vessels treated in EC-USΘ



Section 7: Osteopathic

- #2: W Anatomical Regions
- #3: 0 Treatment
- #4: 0-9 Body system treated (e.g. head, cervical, thoracic, lumbar, etc)
- #5: X External
- #6: 0-9 Method (e.g. articulatory-raising, fascial release, etc)
- #7: Z



Section 8: Other Procedures

- **#2: C Indwelling Devices**
- **#3: 0 Other procedures or “methodologies that attempt to remediate or cure a disorder or disease”**
- **#4: Body Region**
 - Nervous System
 - Circulatory Systems
- **#6: Method Collection**
- **#7: collection**
 - Nervous\CSF or Other Fluid
 - Circulatory System\Blood



Section 8: Other Procedures

- **#2=E Physiological Systems and Anatomical Regions**
- **#3=0 Other procedures or “methodologies that attempt to remediate or cure a disorder or disease”**
- **#4: Various Physiological Systems and Anatomical regions**
- **#6: Method: Computer Assisted, Robot Assisted... Acupuncture, massage**
- **#7: IVF, breast milk, sperm, piercing, with CT, with MRI, etc**



Section 9: Chiropractic

- **#2: W Anatomical Regions**
- **#3: B Manipulation**
- **#4: 0-9 Body Systems (e.g. Head, Cervical, Thoracic , etc)**
- **#5: X External**
- **#6: Method: Non-manual, Indirect Visceral, Extra-articular, etc**



Ancillary Sections

- B Imaging
- C Nuclear Medicine
- D Radiation Oncology
- F Physical Rehabilitation and Diagnostic Audiology
- G Mental Health
- H Substance Abuse



DRG allocation

Procedure	DRG	RW	Reimbursement
Open excisional biopsy L lung 0BBL0ZX	163 Major chest procedures	5.0910	26.523 \$
Bronchoscopic excisional biopsy L lung 0BBL8ZX	166 Other respiratory system OR procedures with Major Complications and Co-morbidities	3.7322	19.444 \$



Remarks

1. “Hospitals and other facilities that will be using the ICD-10-PCS system will most likely have a list of valid PCS codes embedded in the abstracting system
Any code submitted for billing should be cross-referenced with the list of valid codes”
2. Mandatory coding



The Code Finder



bitwisedevelopment.com

