



2020 October

Business Meetings

Community Updates

info@snomed.org



2020 October

Business Meetings

Global Update
Clinical Engagement
Genomics
Education & Product Support
Collaboration Update

Products & Services Group
Content & Mapping
Release Management
Technical Services



Click for specific updates



Global Update



Shelley Lipon
Chief Customer Officer



Americas regional update

- Continued to work with a number of groups in South American countries on licensing and use of SNOMED CT (Colombia, Ecuador, Brazil).
- Attended the US NCVHS Full Committee Meeting (June 17-18, 2020).
- Attended at the 2020 ONC Tech Forum (August 10 - 11, 2020).
- Attended at the HL7 International Annual meeting (September 21 - 25, 2020).
- SNOMED CT/CPT Demonstrator project near completion



Europe regional update

- French translation group produced version 2 of French translation for publication on September 30, 2020.
- German translation group established, with membership from Austria, Switzerland, Luxembourg and Germany (Medical Informatics Initiative - MII project).
- MII project has been set up as the Germany's NRC with nearly 90 licensed SNOMED users participating in the project. SNOMED International is supporting developments and providing education where required.
- The European Union (EU) Working group has been established to raise awareness of the EU issues affecting all European member countries.



Middle East & Africa regional update

- Negotiations underway with Western Cape province of South Africa for a Regional License.
- Working with EasyClinic (EMR vendor out of India, hundreds of African implementations across 8 countries) re: implementing SCT for Penda Health (16 clinics) in Nairobi, and possibly across their other African implementations.
- Ongoing discussions with Bahrain and UAE.



Asia and Pacific regional update

- Republic of Korea joined as a member country in August 2020. New member onboarding is underway.
- Armenia's country onboarding and stakeholder engagement virtual workshop delivered.
- Agreement signed with the Ministry of Health of Vietnam about SCT pilot implementation.
- Discussions ongoing with the Ministry of Health of Sri Lanka.
- Engagement strategy for China developed for approval by the Management Board.
- Attendance and presentations at New Zealand's SNOMED Open Forum Hui Tuwhera in May, June and September 2020.

Other activities



SCT Research Webinars

- Monthly SNOMED CT Research Webinars successfully launched. Each month seeing an increased number of registrations, live attendance, and enrolment in the Research Reference Group.

Member Forum support

- Thirteen MF joint and topic-based meetings held in Q2 & Q3 2020.
- Revised MF Terms of Reference drafted for GA approval.

Customer Engagement Support

- Research Engagement Strategy updated.
- Humanitarian/Public Use waiver documentation updated.
- ICD-11 Working Group for members launched and kick-off meeting held in August 2020.



Clinical Engagement



Ian Green
Customer Relations Lead, Europe &
Clinical Engagement Business Manager



1. Monthly clinical webinars have been delivered and received good feedback from attendees
2. Clinical reference groups
 - a. Continue to develop and discuss new content issues
 - b. Continue steady growth in membership
3. Clinical project groups - continue to deliver against content deliverables
4. SNOMED International presented at MEDINFO 2020 on SNOMED CT and clinical data analytics
5. Clinical contact database - continues to grow to provide clinical expertise to authoring team when required
6. Clinical analytics demonstrator - additional scenarios created and tested based on COVID requirements

Genomics



Ian Green
Customer Relations Lead, Europe &
Clinical Engagement Business Manager



Genomics

1. Genomic pilots - final reports published in July 2020 (available on confluence page) and looked at the collection of cardiovascular/kidney disease phenotypic information
2. Both pilots developed and used SNOMED with FHIR value sets

"The report concludes that SNOMED CT is suitable to do deep phenotyping in this clinical area (cardiovascular)"
The project "provided useful insight into the use case relating to analysis of subsumption relationships within analytic queries genetic kidney disease)"



Genomics

3. Human Phenotype ontology (HPO) - SNOMED International and HPO are currently in discussion on working to develop a definitive map between SNOMED CT and HPO
4. Phenotypic content - project is underway to deliver 4,000 modelled phenotype concepts into the community area
5. Precision medicine - initiation of a project to develop a statement/white paper on the use of SNOMED CT in Precision Medicine



Education and Product Support



Linda Bird
Head of Education & Product Support

— SNOMED CT Courses



Foundation (English & Spanish)

Self-paced

Implementation

January & July

Authoring Level 1

March & September

Terminology Services

Self-paced



SNOMED CT Learning Pathways



SNOMED CT for Data Analysts

Self-paced



SNOMED CT for Developers

Self-paced



SNOMED CT for Clinicians

Self-paced

— SNOMED CT Certifications



Authoring Level 1

Enrol any time

Terminology Services

Enrol via course

NEW



Terminology Services Certification Course

This course teaches the principles of using a SNOMED CT terminology server to search and retrieve SNOMED CT content, using two terminology service APIs - a native SNOMED CT API (Snowstorm) and the standard HL7 FHIR terminology service API. A proctored certification exam is included with the course.

[12 hours of learning materials]

snomed.org/courses



SNOMED CT for Clinicians

This learning pathway provides an introduction to the why, what and how of SNOMED CT from a clinical perspective.

[3 hours of learning materials]

Full pathway available December 2020

Continuing Professional Development

- Foundation Course 11 CPD
- Implementation Course 50 CPD
- Authoring Level 1 Course 60 CPD
- Foundation Course 3 CPE
- Implementation Course 15 CPE
- Authoring Level 1 Course 15 CPE



SNOMED CT Documentation



Terminology Services Guide

This guide has been revised, and now describes the terminology services required to support effective access to the content and features of SNOMED CT.

snomed.org/tsg



COVID-19 Data Coding Guide

This guide provides practical examples of SNOMED CT subsets that can be used to code a variety of COVID-19 related data elements, such as symptoms, risk factors and test results.

snomed.org/cv19



Expression Constraint Language v1.5

ECL version 1.5 introduces a major new feature to the ECL language - the ability to filter query results based on a term search.

snomed.org/ecl

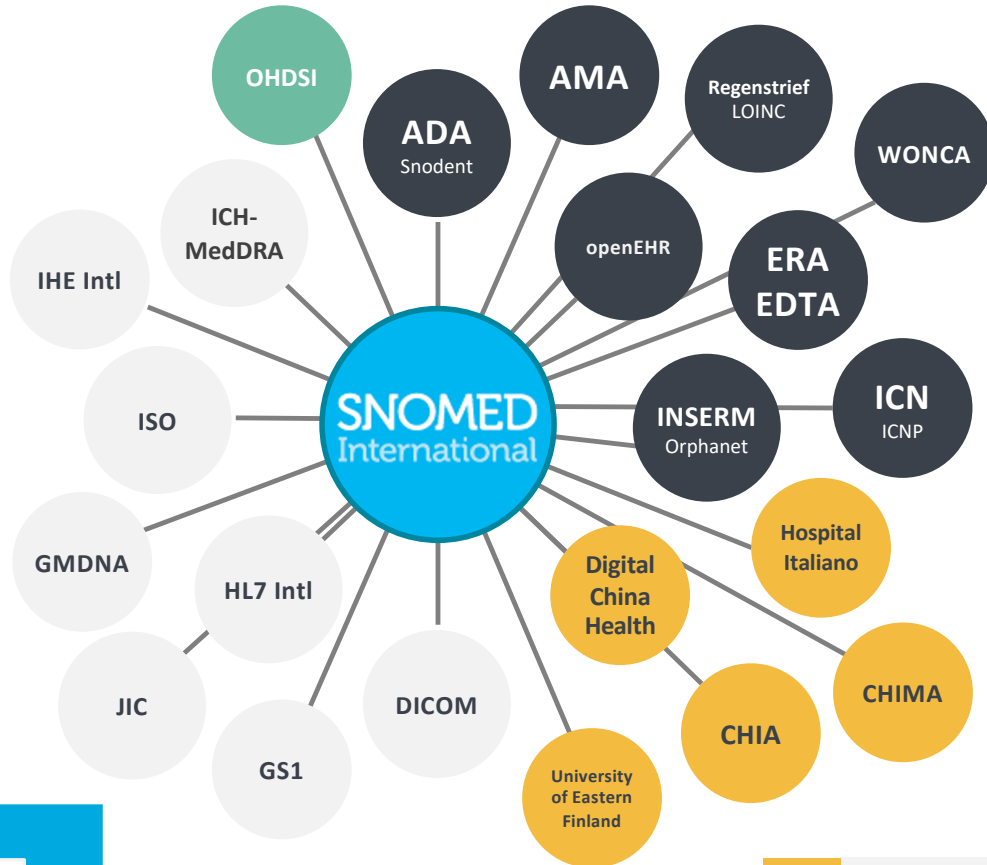
Collaboration Update



Jane Millar, Collaboration Lead
Suzy Roy, Customer Relations Lead
Americas & Collaborations Specialist

Our Partners:

An Ecosystem



[▶ Link to Glossary](#)

Agreements in Negotiation *new or expired*

- AND
- AAP
- HPO
- NANDA-I
- OHDSI
- WHO

Ongoing Relationships *not presently governed by an agreement*

- CDISC
- GA4GH
- IPCCC
- OBO
- OMIM

LEGEND

Clinical

Standards

Research & Academic

Education Delivery & accreditation

Collaboration

- **MedDRA/ICH** - SNOMED CT/MedDRA maps alpha release. Production release April 2021
- **HL7 International** - SNOMED on FHIR work on the implementation guide and profile continues. September 2020 release of H7 IPS refset
- **ICN** - New agreement with ICN to incorporate ICNP 2019 into SNOMED CT and develop, release and distribute ICNP as Reference Set on behalf of ICN, starting in 2021.
- **Social Determinants of Health** - Continued to provide guidance on content relevant for SNOMED CT on Gravity project. Outreach to Members on requirements



Collaboration

- **NANDA-I** - agreement to incorporate a set of NANDA-I concepts in to SNOMED CT in 2021/22.
- **OHDSI** - Evaluated OHDSI as a pilot test for the Collaboration Framework and moving forward with collaboration negotiations.
- **Academy of Nutrition and Dietetics** - ongoing inclusion of nutrition content into SNOMED CT, agreement negotiations currently ongoing.
- **INSERM (Orphanet)** - Alpha release of SNOMED CT - Orphanet map released for review. Production release autumn 2021.



Collaboration

- **GMDNA** - ongoing inclusion of relevant GMDN content into SNOMED CT
- **UNICOM project (EU)** - Consortium member. Input to a standards gap analysis. Production of materials describing relationship between SNOMED CT and IDMP.
- **Global Patient Set** - Preparing for second release of GPS - including GPS format and RF2 as requested by user community.
- **American Academy of Periodontology** - discussions re inclusion of content in SNOMED CT
- **AMA** - Finalizing an AMA/SNOMED CT demonstrator tool to showcase the value proposition of integrating the two standards





Products & Services Group



Rory Davidson,
Chief Information Officer

2020 in a few SNOMED numbers



6,927 New concepts added



117 People using the SNOMED
International Authoring
Platform



2,820 Requests received from
community



1,931 Requests processed for
release



35 SNOMED CT products
released and distributed



4 New Products & Services
team members

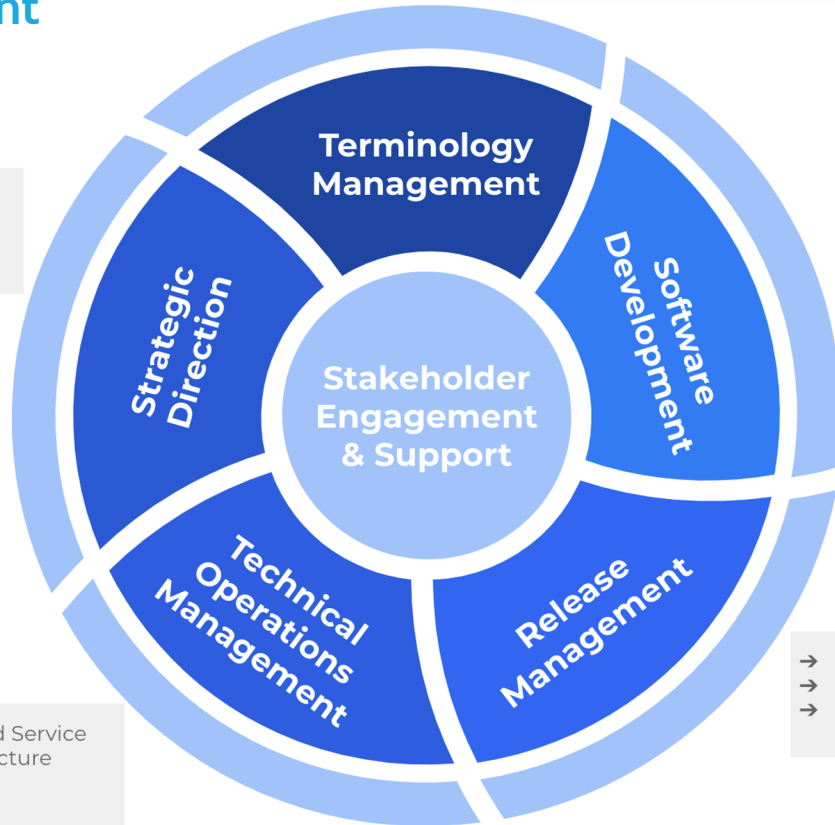
Products & Services Group

- Content & Mapping
- Release Management
- Technical Services



- SNOMED CT Content
- Terminology Mapping
- Quality Assurance

- Strategic planning
- Content and Technology Analysis & Design
- Steering group



- Software Design,
- Software Development
- Software Testing
- Project Planning

- Managed Service
- Infrastructure
- DevOps
- Support

- Release Planning
- Content Releases
- Software Releases

Products & Services

2020-2021 Strategic Items



Wider Collaboration & Easier Access

Community Content
Distributed & Collaborative Authoring
Terminology as a service



Content Domain Coverage

Genomics
Social Determinants of Health
Vaccines



Technology Growth

Concrete Domains
Frequent Releases
Template Management



Monica Harry,
Director of Content & Mapping

Products & Services
**Content and
Mapping**



content@snomed.org



Our dilemma is that we hate change and love it at the same time; what we really want is for things to stay the same but get better.

Sydney J.
Harris

Team - 13 team members



Priority content projects:

- **Social Determinants of Health** content additions driven by Nutrition & Gravity projects
- **Pathology** - working with University of Nebraska to add content
- **ICD-11 Content additions** - based on analysis of latest WHO release
- **Traditional Medicine** - Project group up and running, high-level concepts TBD
- **Sex, Gender** - Project charter in progress, call for participants
- **Devices** - Continuing work on cleanup and attribute development

Content Projects



Other development projects:

- Genomics - reviewing content additions from 3rd party
- Mental and Behavioral Health - CRG providing review of existing content
- Epilepsy - Review completed; content change requests pending

Maintenance content projects (BAU):

- CRS etc. covering 38 areas of hierarchy
- QI structural cleanup
- Template development

Mapping Projects



Mapping :

- MedDRA draft for review available
- Orphanet draft for review available
- ICD-10 map Maintenance; based on changes SI make; final update pending availability of files from WHO
- ICD-11 pilot map, draft for review pending publication

ANNOUNCING: Drug Extension Support Group



The **Drug Extension Support Group** is a community driven group intended to provide support to implementers of a SNOMED CT national drug extension. Inaugural meeting: **Thursday 29th October 2020 at 11:00 UTC.**

Open to any stakeholder from the SNOMED CT community who is either actively using, planning to use, or interested in potentially using the SNOMED CT drug extension model.

Objective

- Provide forum to share their real-world experiences, challenges and questions.

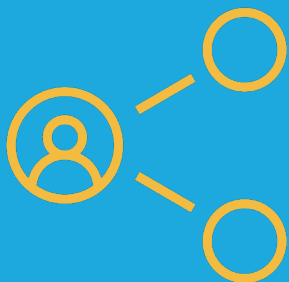
Goals

- Enable the successful interoperability between SNOMED CT national drug extensions and other pharmacy standards required for national or cross-border data sharing.
- Enable the successful implementation of national SNOMED CT national drug extensions

Please contact info@snomed.org to express interest in participating in this group; include details of implementation experience you wish to share.



Andrew Atkinson,
Release Manager



Products & Services
**Release
Management**

release@snomed.org

New Product Releases



Global Patient Set (GPS)

1. The second GPS Freeset Release was published successfully on 30/09/2020
2. In addition, this cycle an RF2 format version of the GPS Refset has also been released

COVID-19 Content

1. All of the latest content has been included in the July 2020 International Edition
2. This has further been incorporated in both the Freeset + RF2 versions of the GPS Refset release

MedDRA + Orphanet

1. Both products distributed as Alpha releases for review in 2020
2. Feedback deadline for MedDRA has now passed
3. However we are still encouraging feedback on Orphanet until 30/11/2020

International Edition Release updates



- The interim March 2020 International Edition was published successfully, incorporating new content to support the ongoing global effort to tackle the Coronavirus outbreak
- This was SNOMED International’s first “out-of-cycle” International release, which served as a promising trial for more Frequent Delivery.
- The July 2020 International Edition then followed, introducing a further set of new COVID-19 concepts.
- Updates about content relating to COVID-19 can be found here:

<https://confluence.ihtsdotools.org/display/snomed/SNOMED+CT+COVID-19+Related+Content>

Terminology Release Advisory Group

Tuesday 6th October 2020

09:00 to 11:00 UTC

(remote conference call)

1. Wide variety of agenda items covered, including those listed opposite:
2. Please feel free to read the minutes and post any questions:

<https://confluence.ihtsdotools.org/pages/viewpage.action?pageId=110339958>

1. *Observers are welcome as always, and we'd like to thank everyone for their dedication in attending at some "interesting" times of day + night!*

01. Concrete Domains

02. Frequent Delivery

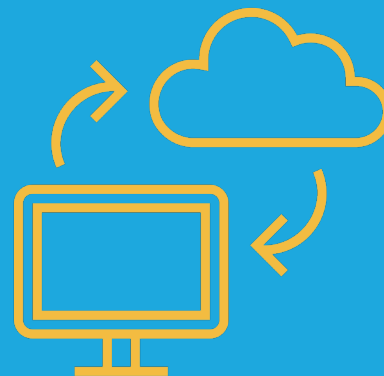
03. Release Metadata

Advanced Notice of changes to the Release schedule for the SNOMED CT International Edition

- In the past few years we have introduced additional review periods as part of the release cycle of the SNOMED CT International edition - we now currently produce Alpha, Beta and Member releases for review during each International Edition cycle.
- Given the relative stability of the recent releases, we are now considering replacing the Alpha release period with content authoring, which would result in SNOMED International being able to include an extra 2 weeks worth of editing improvements in each International Edition release.
- We would, of course, continue to produce the Beta and Member releases for community review, allowing feedback to be provided before the final Production release is published. This change would be implemented from the January 2021 International Edition release cycle onwards.
- If you can foresee any issues with this please contact SNOMED International ASAP at support@snomed.org with "International Edition Alpha release schedule question" in the subject line.

Terance Shird,
Technical Operations Lead

Technical Services



techsupport@snomed.org

Tooling Updates



Public SNOMED Browser (<http://browser.ihtsdotools.org>)

- A read only version of the MRCM Maintenance Tool has been added which allows users to browse the MRCM
- A Release Statistics page has been added to show a graphical and tabular breakdown of the latest International release, which includes the number of new and changed concepts and overall release statistics
- A technical update to the database that supports the browser to ensure we stay up to date with the technologies, improvements and security updates.

Refset & Translation Platform

- Two major enhancement releases have been added to the platform since April, improvements to the permissions model, bulk refset maintenance features and improved language handling have all been added recently
- A demo of the new enhancements will be held as part of the Managed Service User Group which is on 5th October 2020 at 13:00 UTC, and will be open to observers.

Tooling Updates



SNOMED Authoring Platform & Terminology Server

- Addition of the first phase of an improved security model introducing Role Based Access Controls (RBAC) that allows better control of what users can see and do on the platform. This will continue to be improved with new features being added in the upcoming releases to support Community Content and Collaboration.
- Addition of a bulk import feature for the Managed Service to allow importing of translations and description updates
- A technical update to the database that supports Snowstorm to ensure we stay up to date with the technologies, improvements and security updates available

Data Analytics Tooling

- Ongoing development on the next version of the tool to demonstrate SNOMED CT and analytics, including work on the [Synthea](#) open source synthetic data generator and working with CSIRO on the [Pathling](#) analytics server.
- For more information, contact analytics@snomed.org.

— Technical Operations



OS Migrations

- The work to migrate all our servers to the newer version of operating system has been completed, just in time for the next version which was released a few months ago. A new project will be launched to manage the upgrade to this 2020 version which is expected to be simpler than the last upgrade.

Web Security Certificates

- We are currently moving from a commercial model to manage our web security encryption (SSL), this will allow us greater flexibility managing our tooling domains so we can soon move from ihtsdotools.org to snomedtools.org. It also takes advantage of cost savings whilst maintaining the same level of security and assurance we have now.

DevOps Automation

- Introduction of new DevOps tooling is allowing us to do more with less and introducing new technologies that allow us to make efficiency savings and lay the groundwork for “self-healing” systems for times when the Technical Team are not available e.g. Out of Hours/Weekends.

Members Managed Service



Migration to SNOMED International Terminology Server

- We have now completed the move of all Managed Service extensions to the SNOMED International terminology server, Snowstorm. Four members, US, Belgium, Denmark and New Zealand, have just released their national extensions using the new server.

New Tooling Improvements

- New MS specific enhancements and features have been added to the SNOMED Authoring Platform and the Refset & Translation Service since the last update in April. Demos of these features will be taking place in the Managed Service User Group on Monday 5th October which is open to observers.

New Member Onboarding

- We continue to work with a few prospective new Managed Service customers. The current situation is presenting some unique difficulties in this area which we will seek to overcome as the process continues.

Send your questions to info@snomed.org



best-selling author
physician
academic

SNOMED International's 2020 Keynote Featuring:
Dr. Ben Goldacre

Oct 08 | 12:00-13:30 UTC

Register now at snomedexpo.org

SNOMED CT EXPO 2020
Virtual Conference October 8-9

#SCTEXPO20

SNOMED CT's James Read Experience Panel:
Exploring Real World Use

Featuring an esteemed panel of global experts who will share SNOMED CT past successes and future opportunities

Oct 09 | 12:00-13:30 UTC

Register now at snomedexpo.org

SNOMED CT EXPO 2020
Virtual Conference October 8-9

#SCTEXPO20 Save the date

SNOMED CT Expo, October 8-9, 2020